

Characteristics:

High Power DC Motor

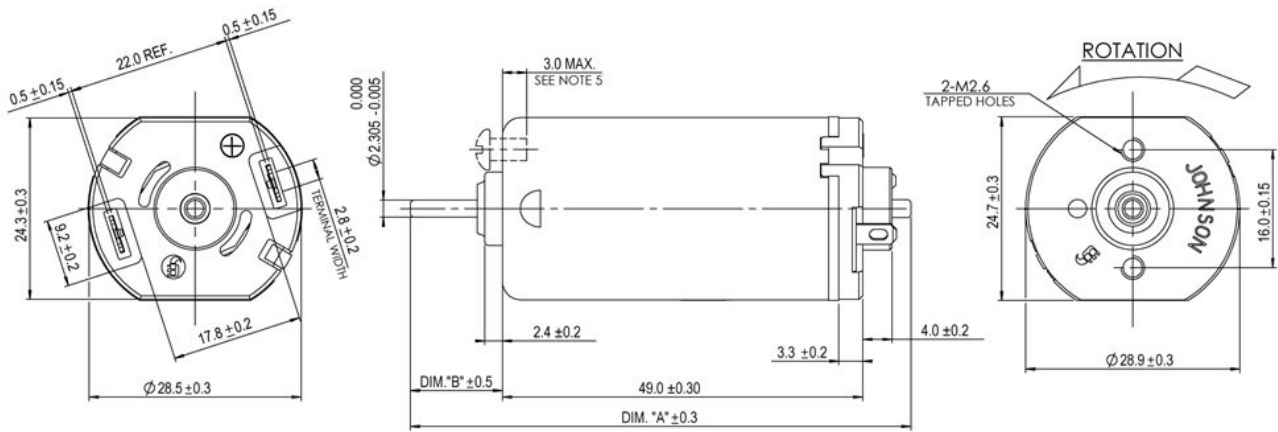
Specifications:

Dimensions	: Ø 28.9 X 24.7 X 49 mm
Shaft Diameter	: Ø 2.305 mm
Input Voltage	: 120.0 V DC
Rectified	: Rectified
No Load Speed	: 7900 rpm
Maximum Efficiency	: 45%
Torque at Maximum Efficiency	: 11.00 mNm
Speed at Maximum Efficiency	: 5500 rpm
Life (Typical)	: 150 hr
Life Test Condition	: 55
Weight	: 105 g
Certification	: UL, E60303 , RoHS

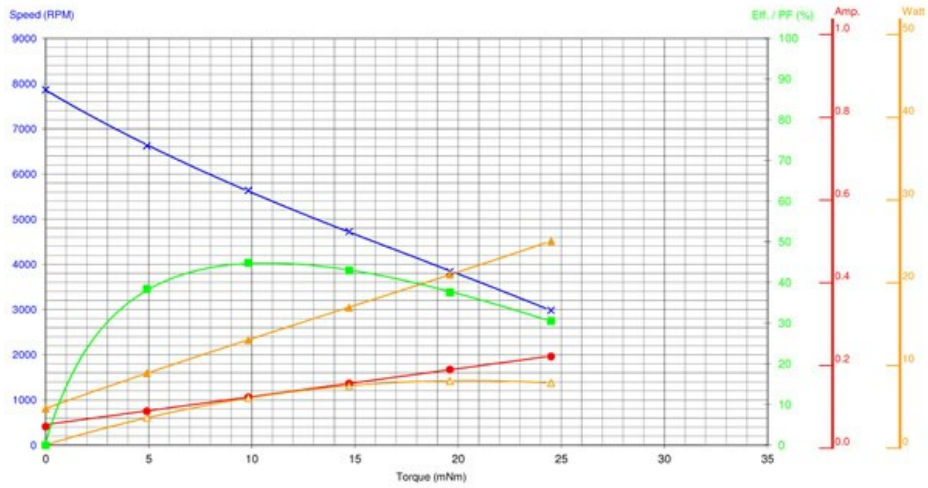
**Performance Data:**

	No Load	Stall	Maximum Efficiency	Maximum Power
Current (A)	0.05	-	0.12	-
Efficiency (%)	-	-	45	-
Output Power (W)	-	-	6.00	-
Speed (rpm)	7900	-	5500	-
Torque (mNm)	-	-	11.00	-

Outline Drawing:



Performance Curves:



Units in Metric

Characteristics:

50W Output Power, High Efficiency

**Specifications:**

Dimensions	: Ø 30.1 X 69.5 mm
Shaft Diameter	: Ø 4.000 mm
Input Voltage	: 120 V DC, Rectified, 60 Hz
No Load Speed	: 15700 RPM
Maximum Efficiency	: 71%
Torque at Maximum Efficiency	: 44.00 mNm
Speed at Maximum Efficiency	: 11900 rpm
Life (typical)	: 700 Hrs
Life Test Condition	: Rectified input with E-capacitor
Weight	: 168 g
Operation Temperature	: 0 to 40 °C
Storage Temperature	: -20 to 85 °C
Electrical Connection	: Leadwire

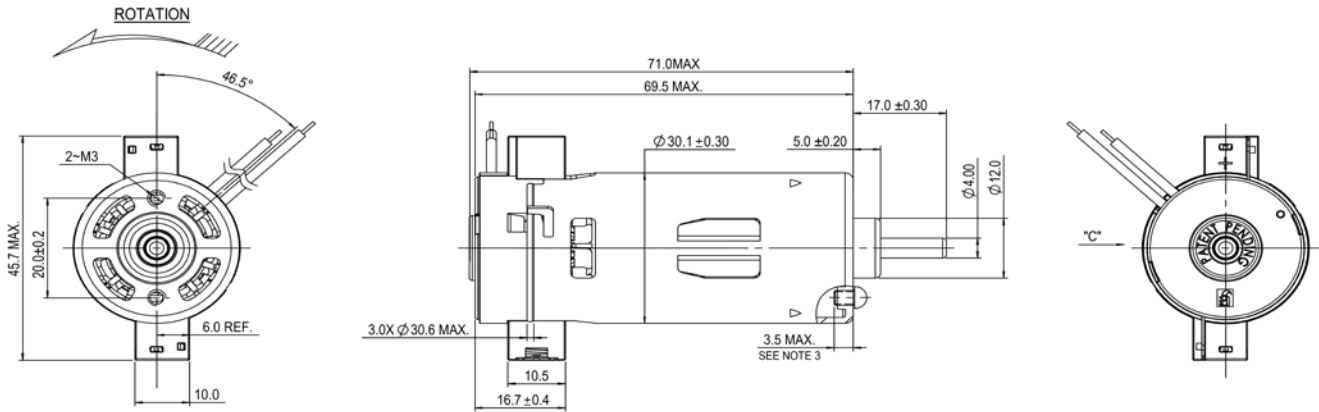
Performance Data:

	No Load	Stall	Max Efficiency	Max Power
Current (A)	0.46	-	1.29	-
Efficiency (%)	-	-	71.00	-
Output Power (W)	-	-	56.00	-
Speed (rpm)	15700.00	-	11900.00	-
Torque (mNm)	-	-	44.00	-

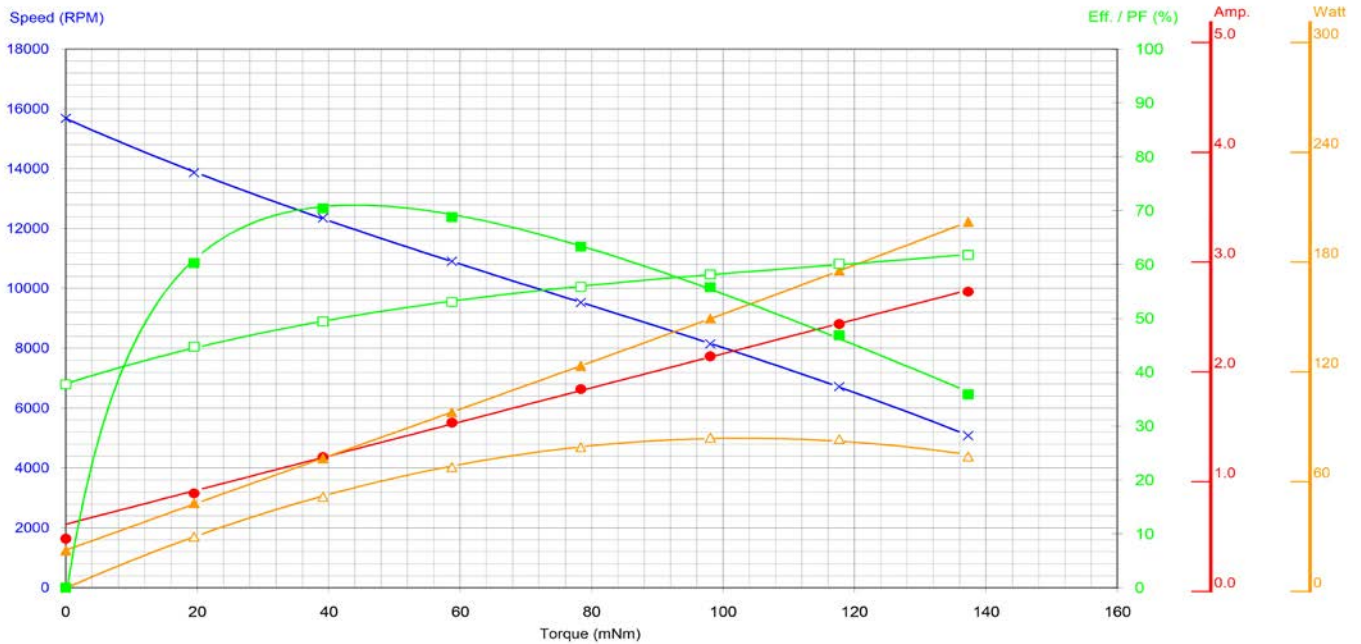
Application Examples:

Brush Roll, Power Brushes, Carpet Cleaners

Drawing:



Performance Curves:



Characteristics:

50W Output Power, High Efficiency

**Specifications:**

Dimensions	: Ø 30.1 X 69.5 mm
Shaft Diameter	: Ø 4.000 mm
Input Volage	: 240.0 V DC, Rectified, 50 Hz
No Load Speed	: 15000 RPM
Maximum Efficiency	: 69%
Torque at Maximum Efficiency	: 47.00 mNm
Speed at Maximum Efficiency	: 11900 rpm
Life (typical)	: 700 Hrs
Life Test Condition	: Rectified input with E-capacitor
Weight	: 167 g
Operation Temperature	: 0 to 40 °C
Storage Temperature	: -20 to 85 °C
Electrical Connection	: Leadwire

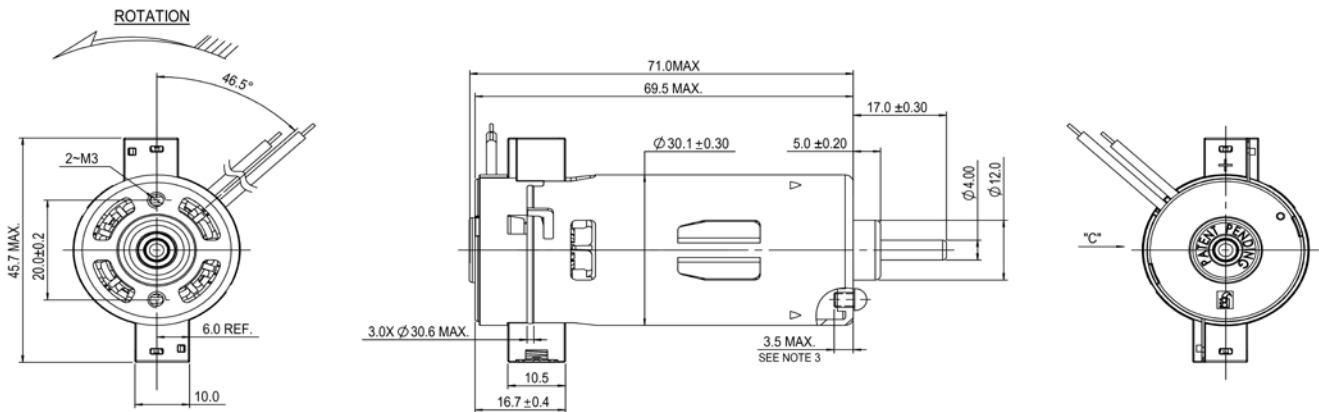
Performance Data:

	No Load	Stall	Max Efficiency	Max Power
Current (A)	0.28	-	0.81	-
Efficiency (%)	-	-	69.00	-
Output Power (W)	-	-	59.00	-
Speed (rpm)	15000.00	-	11900.00	-
Torque (mNm)	-	-	47.00	-

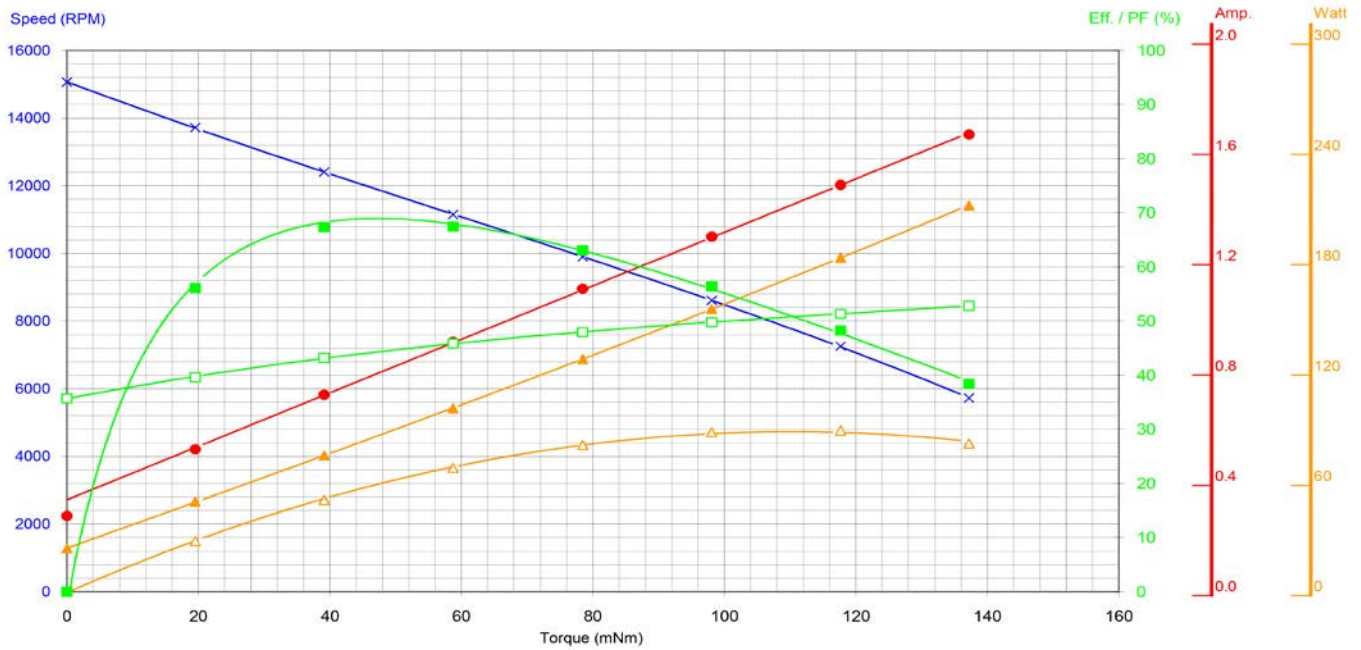
Application Examples:

Brush Roll, Power Brushes, Carpet Cleaners

Drawing:



Performance Curves:



Characteristics:

High Power HVDC motor

Specifications:

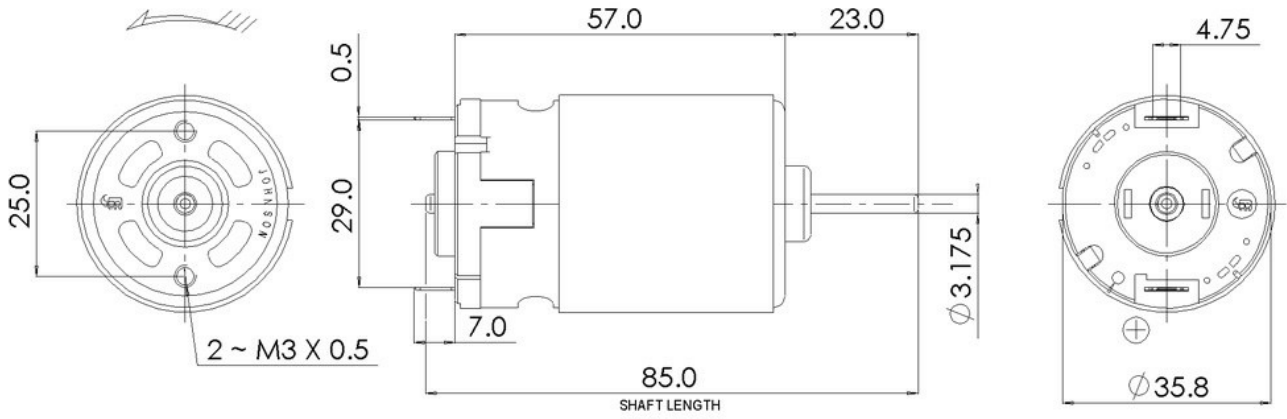
Dimensions	: Ø 35.8 X 57.0 mm
Shaft Diameter	: Ø 3.175 mm
Input Voltage	: 120.0 V DC
Rectified	: Rectified
No Load Speed	: 11427 rpm
No Load Current	: 0.08 A
Maximum Efficiency	: 52%
Maximum Output Power	: 41.30 W
Torque at Maximum Efficiency	: 19.76 mNm
Speed at Maximum Efficiency	: 7936 rpm
Weight	: 180 g
Operating Temperature Range	: -10 to 50 °C
Storage Temperature Range	: -20 to 80 °C
Electrical Connection	: Terminals



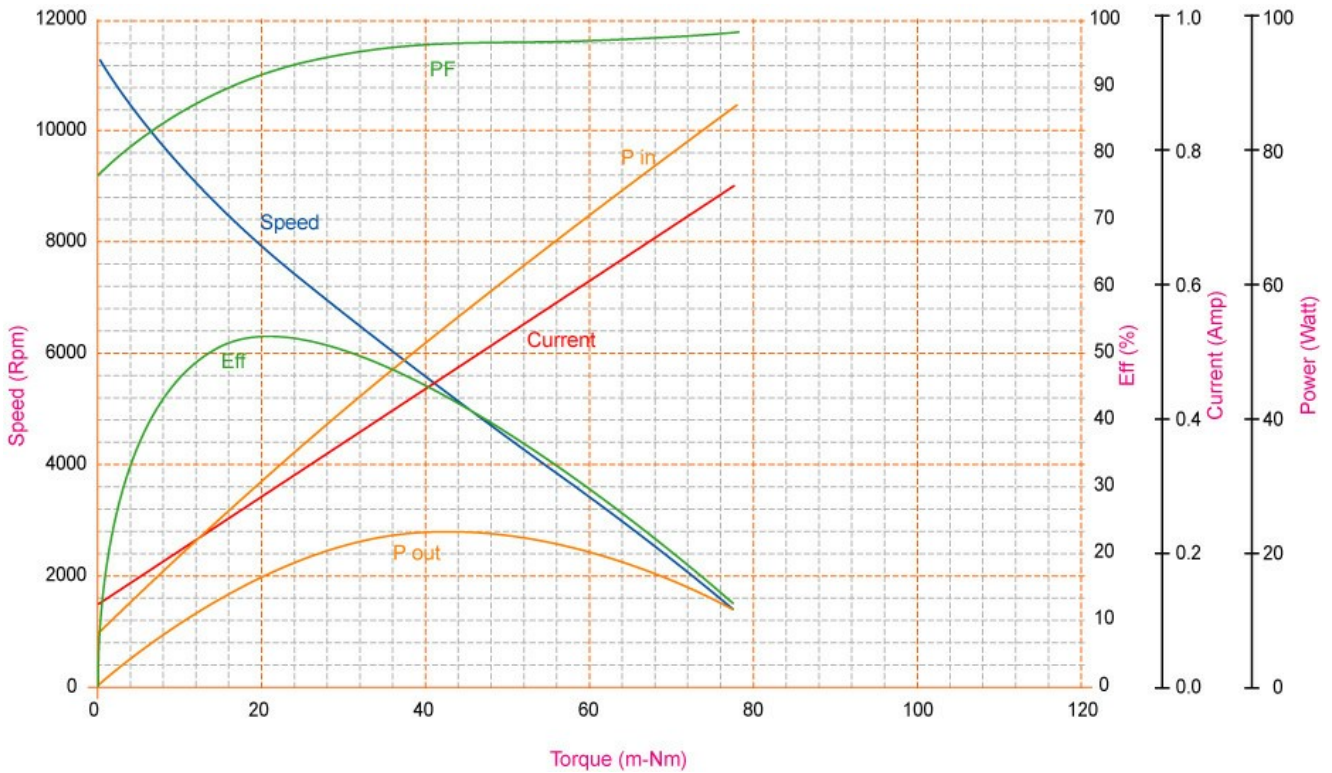
Performance Data:

	No Load	Stall	Maximum Efficiency	Maximum Power
Current (A)	0.08	-	0.28	0.49
Efficiency (%)	-	-	52	41
Output Power (W)	-	-	16.25	41.30
Speed (rpm)	11427	-	7936	4952
Torque (mNm)	-	-	19.76	45.06

Outline Drawing:



Performance Curves:



Units in Metric

Characteristics:

High Power, High Efficiency

Specifications:

Dimensions	: Ø 38.0 X 69.4 mm
Shaft Diameter	: Ø 5.000 mm
Input Voltage	: 230.0 V DC
Rectified	: Rectified
No Load Speed	: 15059 rpm
Maximum Efficiency	: 65%
Torque at Maximum Efficiency	: 64.49 mNm
Speed at Maximum Efficiency	: 11618 rpm
Other Features	: Plate rating power 600Wi for 5 seconds
Weight	: 280 g
Operating Temperature Range	: -10 to 55 °C
Storage Temperature Range	: -20 to 80 °C
Electrical Connection	: Terminal



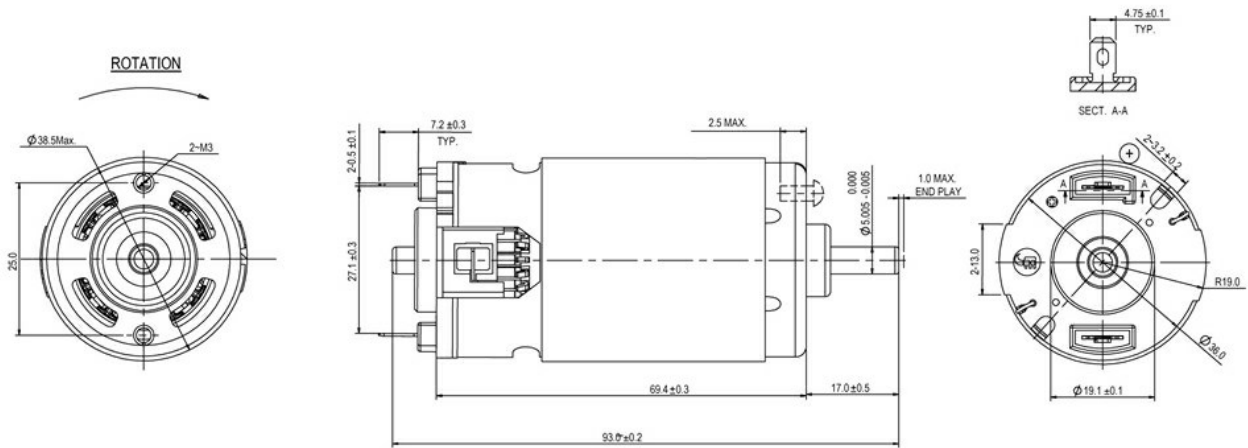
Performance Data:

	No Load	Stall	Maximum Efficiency	Maximum Power
Current (A)	0.13	-	0.60	-
Efficiency (%)	-	-	65	-
Output Power (W)	-	-	79.47	-
Speed (rpm)	15059	-	11618	-
Torque (mNm)	-	-	64.49	-

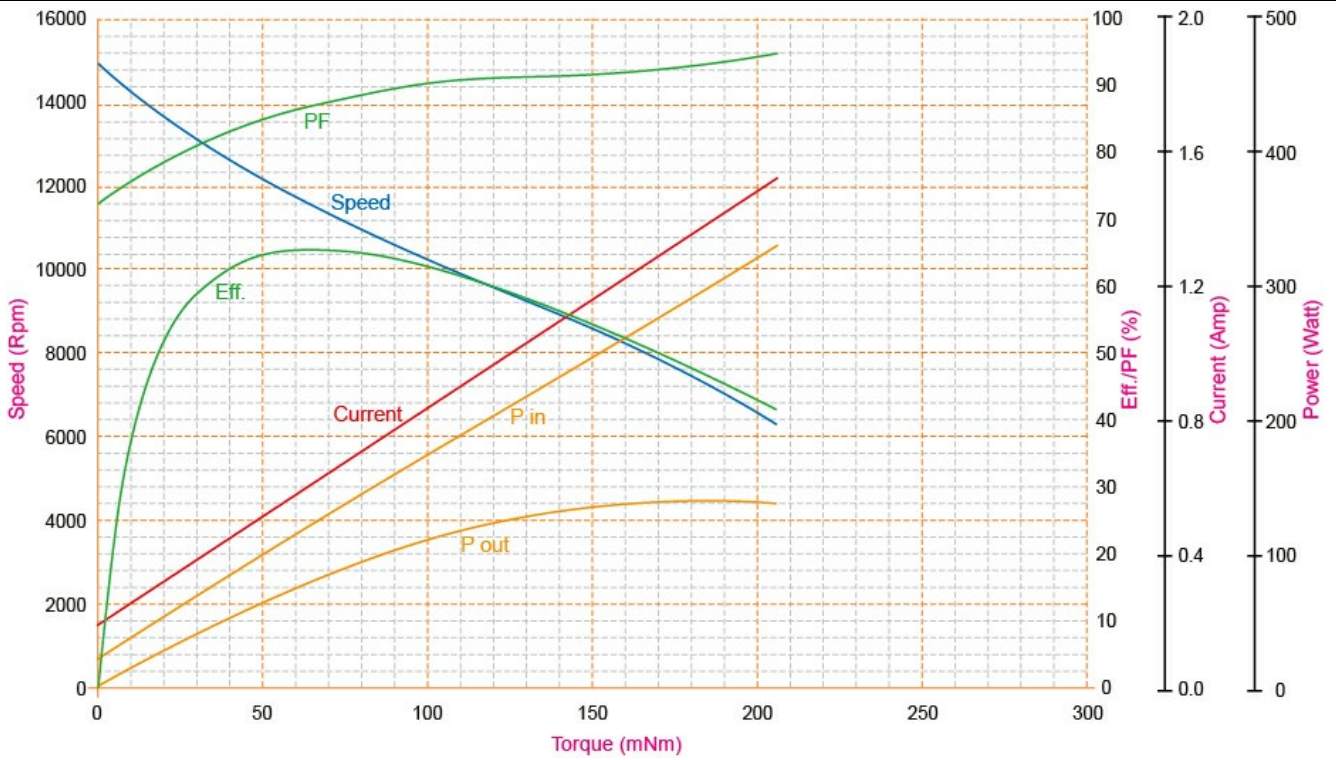
Application Examples:

Hand Blenders

Outline Drawing:



Performance Curves:



Units in Metric

Characteristics:

100W output power, high efficiency

Specifications:

Dimensions	: Ø 38.5 X 65.3 mm
Shaft Diameter	: Ø 5.000 mm
Input Voltage	: 240.0 V DC
Rectified	: Rectified
No Load Speed	: 12500 rpm
Maximum Efficiency	: 69%
Torque at Maximum Efficiency	: 104.00 mNm
Speed at Maximum Efficiency	: 9600 rpm
Life (Typical)	: 600 hr
Life Test Condition	: Rectified input with E-capacitor
Weight	: 274 g
Operating Temperature Range	: 0 to 40 °C
Storage Temperature Range	: -20 to 85 °C
Electrical Connection	: Terminal



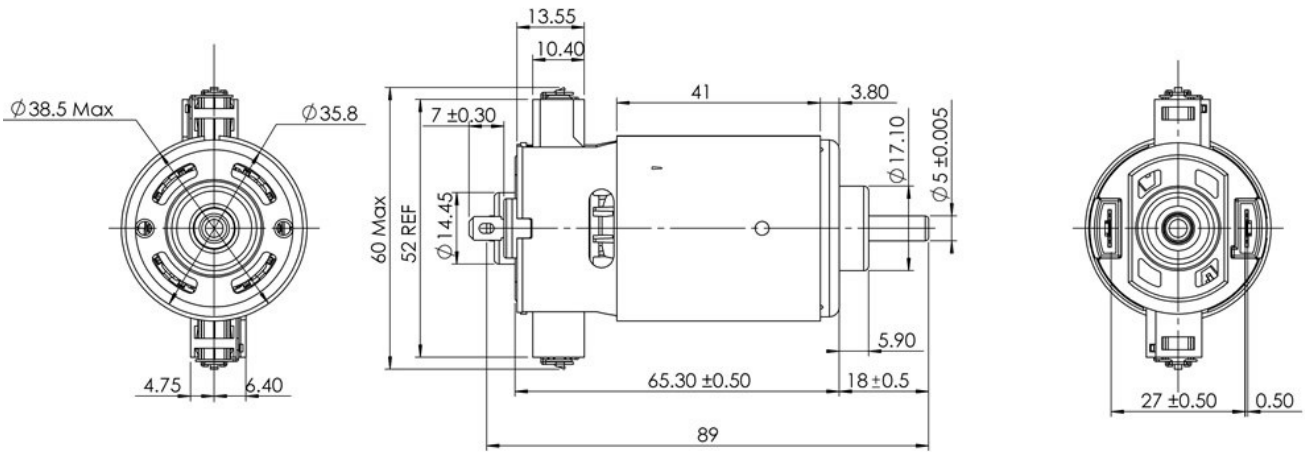
Performance Data:

	No Load	Stall	Maximum Efficiency	Maximum Power
Current (A)	0.33	-	1.29	-
Efficiency (%)	-	-	69	-
Output Power (W)	-	-	104.00	-
Speed (rpm)	12500	-	9600	-
Torque (mNm)	-	-	104.00	-

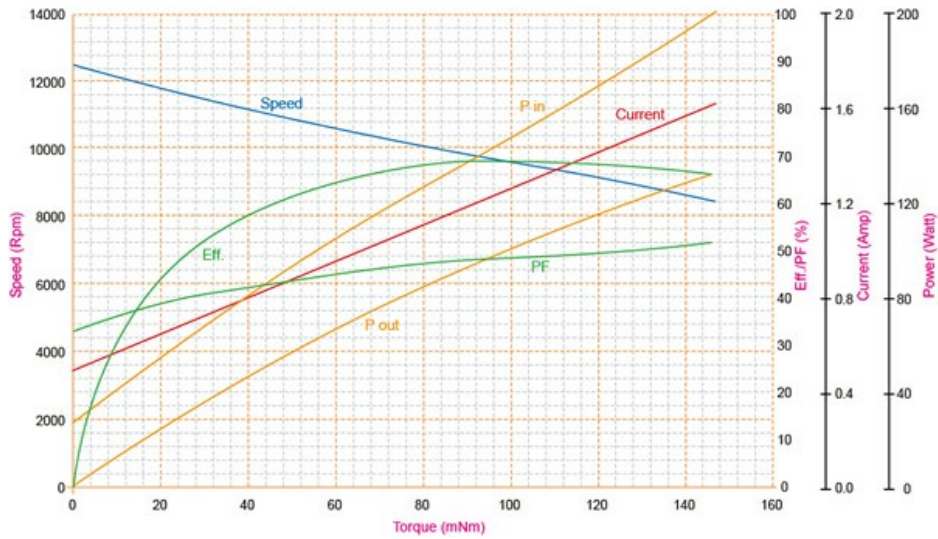
Application Examples:

Brush Roll and Power Brushes

Outline Drawing:



Performance Curves:



Units in Metric

Characteristics:

DC600 platform with 80W output power and 600 hours long life

Specifications:

Dimensions	: Ø 38.5 X 65.3 mm
Shaft Diameter	: Ø 5.000 mm
Input Voltage	: 240.0 V DC
Rectified	: Rectified
No Load Speed	: 13000 rpm
Maximum Efficiency	: 70%
Torque at Maximum Efficiency	: 64.00 mNm
Speed at Maximum Efficiency	: 10700 rpm
Life (Typical)	: 600 hr
Life Test Condition	: Rectified input with E-capacitor
Weight	: 270 g
Operating Temperature Range	: 0 to 40 °C
Storage Temperature Range	: -10 to 50 °C
Electrical Connection	: terminal



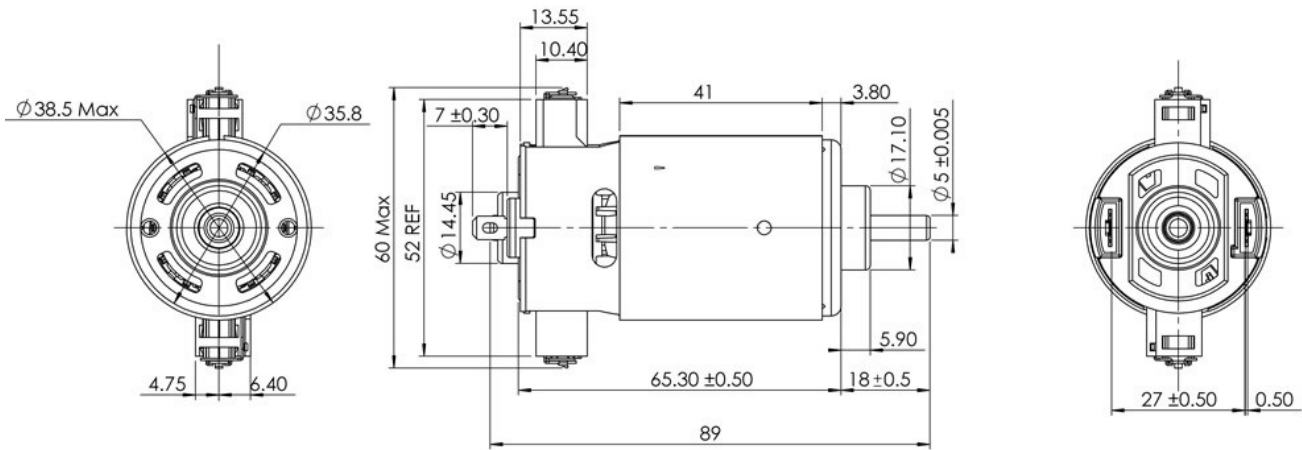
Performance Data:

	No Load	Stall	Maximum Efficiency	Maximum Power
Current (A)	0.24	-	0.98	-
Efficiency (%)	-	-	70	-
Output Power (W)	-	-	80.00	-
Speed (rpm)	13000	-	10700	-
Torque (mNm)	-	-	64.00	-

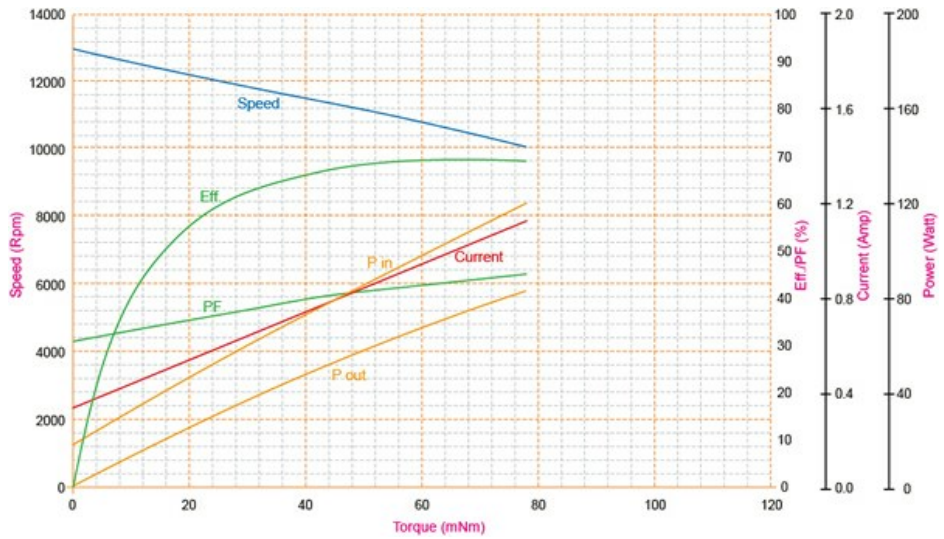
Application Examples:

Brush Roll and Power Brushes

Outline Drawing:



Performance Curves:



Units in Metric

Characteristics:

 High Power, High Torque, High Efficiency
Specifications:

Dimensions	: Ø 42.5 X 68.0 mm
Shaft Diameter	: Ø 5.000 mm
Input Voltage	: 230.0 V DC
Rectified	: Rectified
No Load Speed	: 18327 rpm
Maximum Efficiency	: 62%
Torque at Maximum Efficiency	: 58.52 mNm
Speed at Maximum Efficiency	: 13652 rpm
Life (Typical)	: 67 hr
Life Test Condition	: 12s ON / 48s OFF
Weight	: 283 g
Operating Temperature Range	: -10 to 50 °C
Storage Temperature Range	: -20 to 85 °C
Electrical Connection	: Terminal

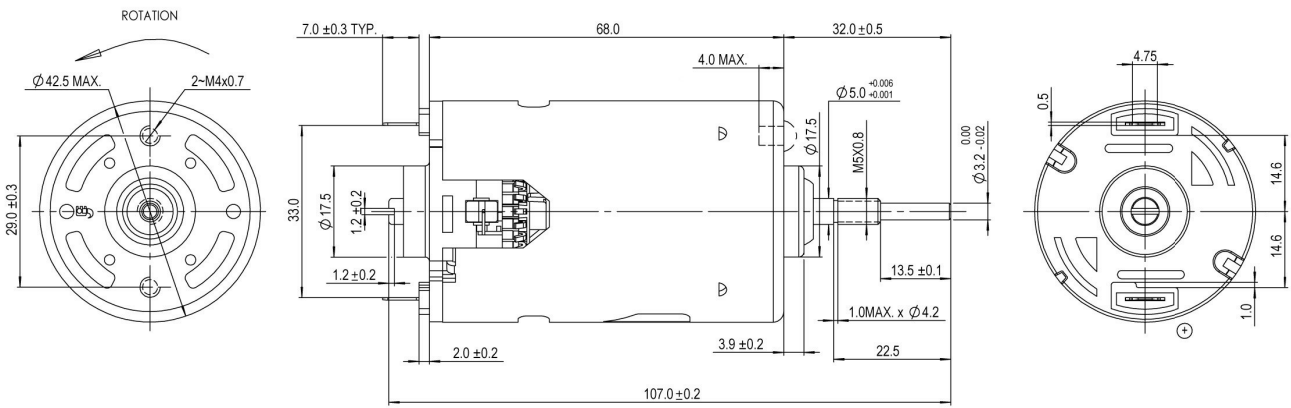
**Performance Data:**

	No Load	Stall	Maximum Efficiency	Maximum Power
Current (A)	0.16	-	0.67	-
Efficiency (%)	-	-	62	-
Output Power (W)	-	-	84.50	-
Speed (rpm)	18327	-	13652	-
Torque (mNm)	-	-	58.52	-

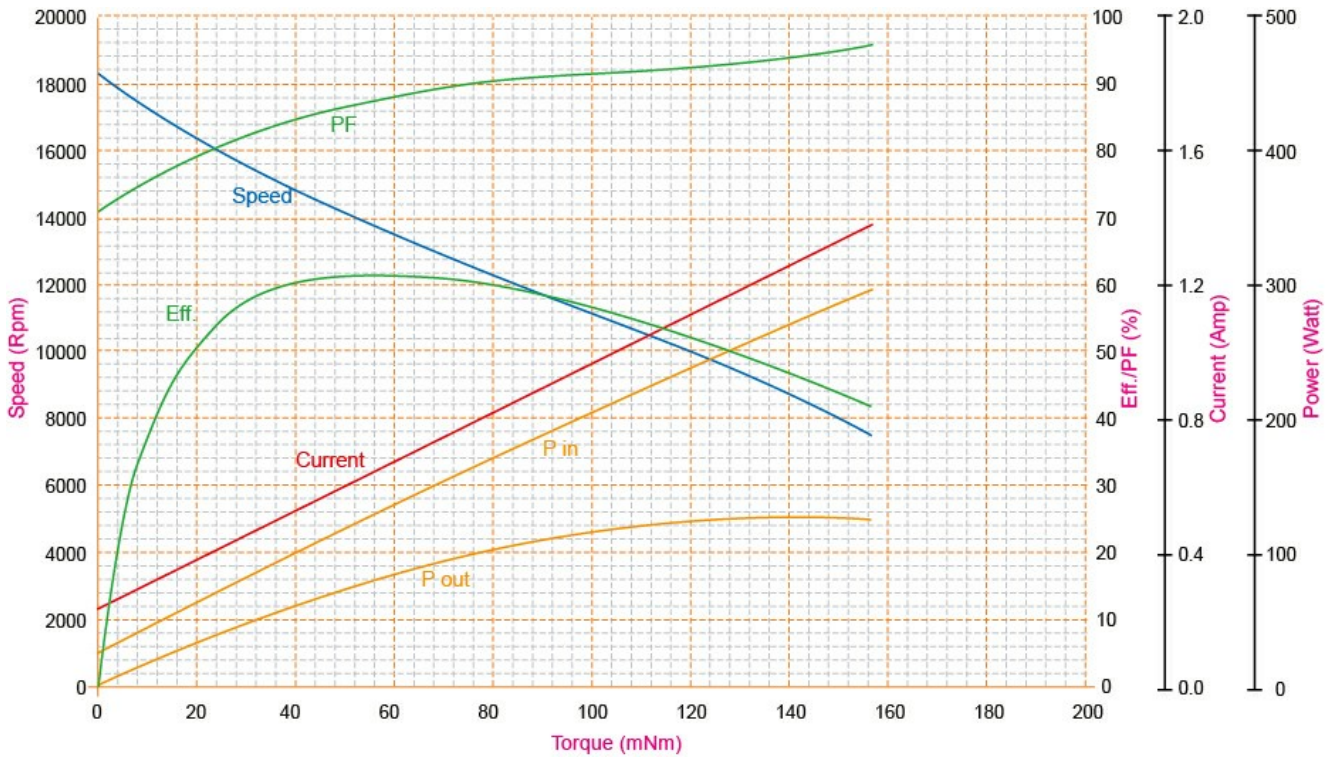
Application Examples:

 Grinders

Outline Drawing:



Performance Curves:



Units in Metric

Characteristics:

High torque HVDC motor

Specifications:

Dimensions	: Ø 42.6 mm
Length	: 68.00 mm
Input Voltage	: 230.0 V AC
Shaft Diameter	: Ø 5.005 mm
No Load Speed	: 11000 rpm
No Load Current	: 0.07 A
Nominal Speed	: 8500 rpm
Nominal Torque	: 40.20 mNm
Nominal Current	: 0.96 A
Life (Typical)	: 180 hr
Weight	: 287 g
Operating Temperature Range	: -10 to 55 °C
Storage Temperature Range	: -20 to 80 °C
Electrical Connection	: Terminals



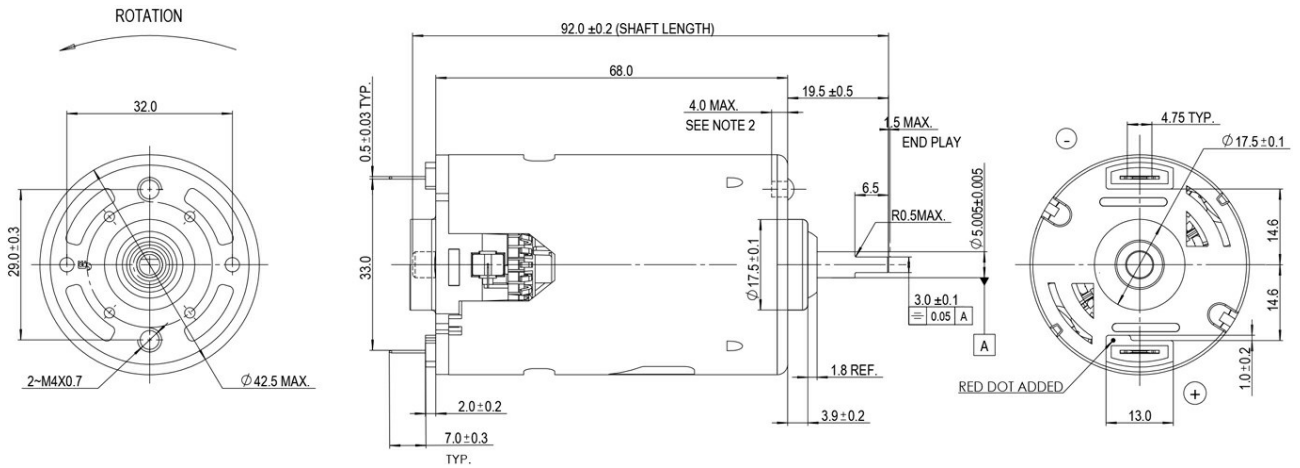
Performance Data:

	No Load	Stall	Maximum Efficiency	Maximum Power
Current (A)	0.07	-	0.31	0.67
Efficiency (%)	-	-	60	43
Output Power (W)	-	-	36.20	62.20
Speed (rpm)	11000	-	8500	5300
Torque (mNm)	-	-	40.20	113.70

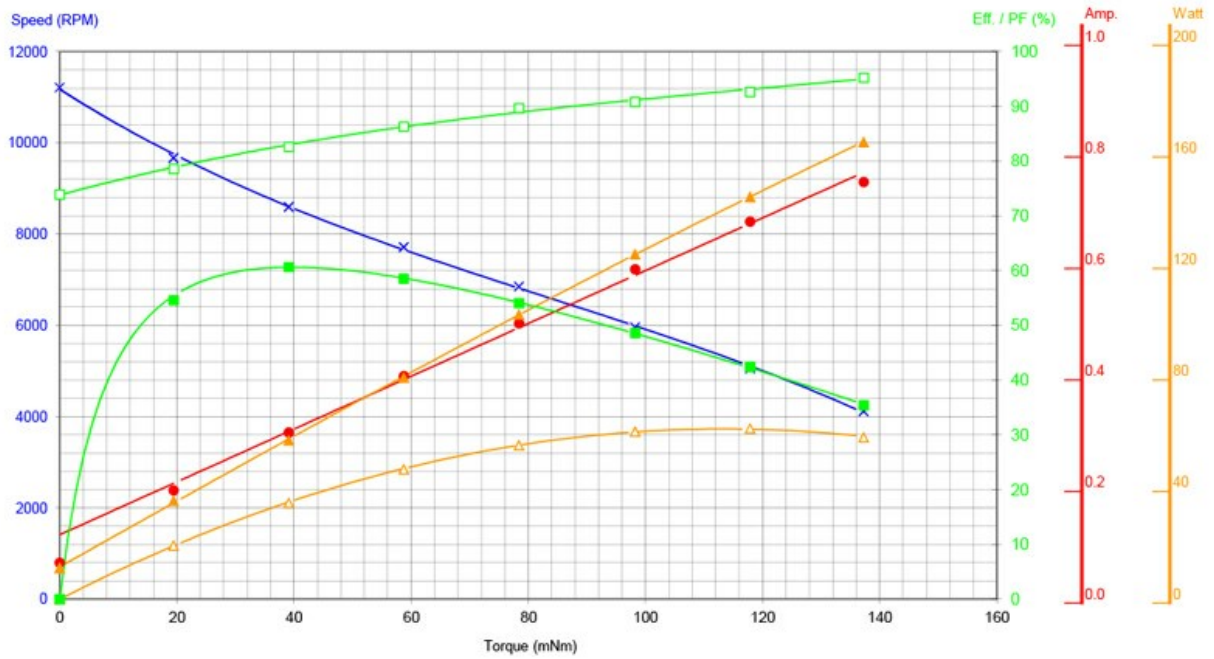
Application Examples:

Blenders

Outline Drawing:



Performance Curves:



Units in Metric

Characteristics:

High Power HVDC Motor

Specifications:

Dimensions	: Ø 45 X 67.5 mm
Shaft Diameter	: Ø 5.005 mm
Input Voltage	: 230.0 V DC
Rectified	: Rectified
No Load Speed	: 15600 rpm
No Load Current	: 0.11 A
Maximum Efficiency	: 65%
Maximum Output Power	: 47.00 W
Torque at Maximum Efficiency	: 92.31 mNm
Speed at Maximum Efficiency	: 11500 rpm
Life (Typical)	: 60 hr
Weight	: 413 g
Operating Temperature Range	: -10 to 55 °C
Storage Temperature Range	: -20 to 80 °C
Electrical Connection	: terminals
Certification	: VDE, CCC



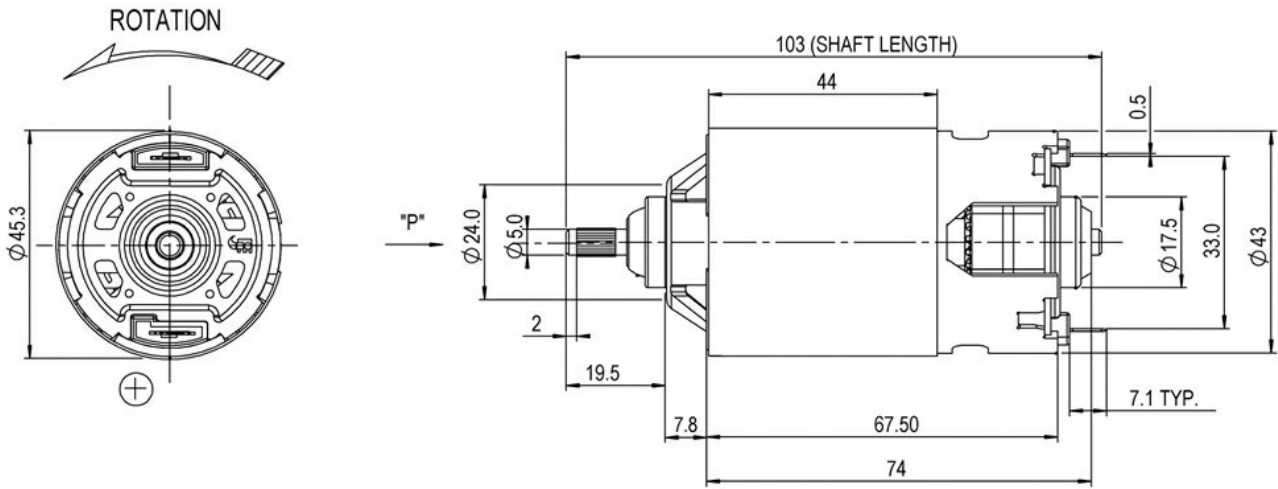
Performance Data:

	No Load	Stall	Maximum Efficiency	Maximum Power
Current (A)	0.11	-	0.86	1.94
Efficiency (%)	-	-	65	47
Output Power (W)	-	-	113.00	47.00
Speed (rpm)	15600	-	11500	7200
Torque (mNm)	-	-	92.31	270.00

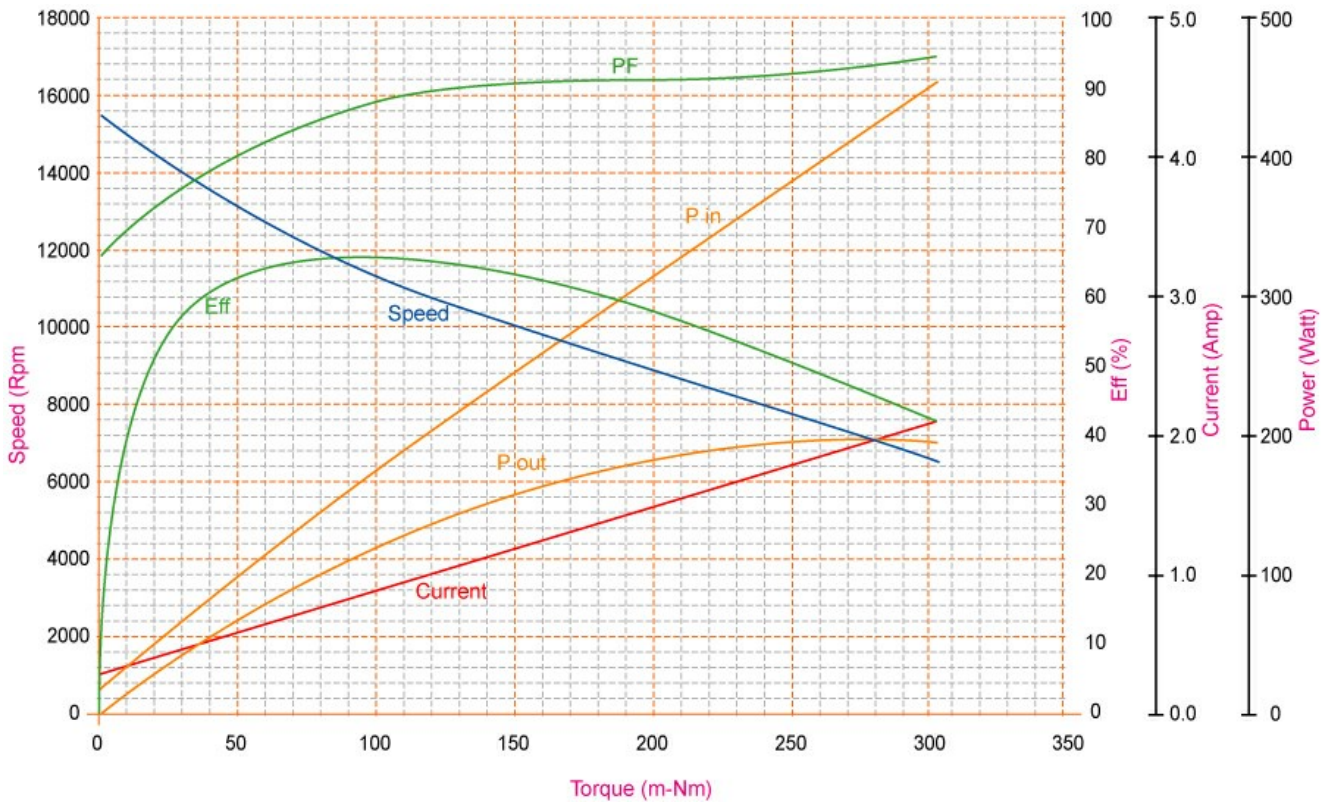
Application Examples:

Hand Blenders

Outline Drawing:



Performance Curves:



Units in Metric

Characteristics:

High power, high efficiency High Voltage DC motor

Specifications:

Dimensions	: Ø 44.7 X 75.6 mm
Shaft Diameter	: Ø 5.000 mm
Input Voltage	: 230.0 V DC
Rectified	: Rectified
No Load Speed	: 15156 rpm
Maximum Efficiency	: 68%
Torque at Maximum Efficiency	: 88.65 mNm
Speed at Maximum Efficiency	: 11538 rpm
Other Features	: Plate rating power 700Wi for 5-10 seconds
Weight	: 414 g
Operating Temperature Range	: -10 to 55 °C
Storage Temperature Range	: -20 to 80 °C
Electrical Connection	: Terminal



Performance Data:

	No Load	Stall	Maximum Efficiency	Maximum Power
Current (A)	0.10	-	0.80	-
Efficiency (%)	-	-	68	-
Output Power (W)	-	-	108.80	-
Speed (rpm)	15156	-	11538	-
Torque (mNm)	-	-	88.65	-

Application Examples:

Hand Blenders

Characteristics:

High Power, High Efficiency, Compact size, Stable rated speed, Low noise

Specifications:

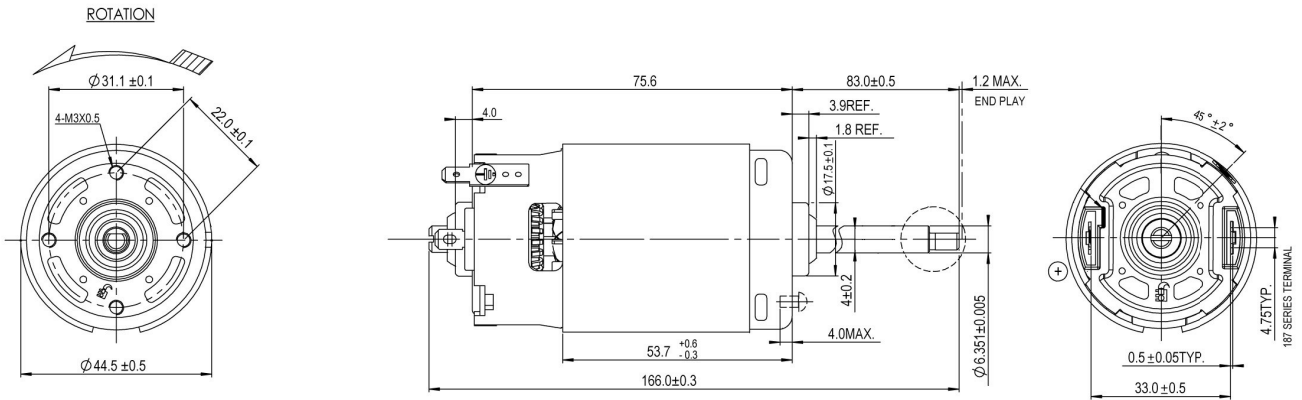
Dimensions	: Ø 44.7 X 75.6 mm
Shaft Diameter	: Ø 6.351 mm
Input Voltage	: 220.0 V DC
Rectified	: Rectified
No Load Speed	: 15639 rpm
Maximum Efficiency	: 60%
Torque at Maximum Efficiency	: 98.93 mNm
Speed at Maximum Efficiency	: 11385 rpm
Weight	: 436 g
Operating Temperature Range	: -10 to 55 °C
Storage Temperature Range	: -20 to 80 °C
Electrical Connection	: Terminal



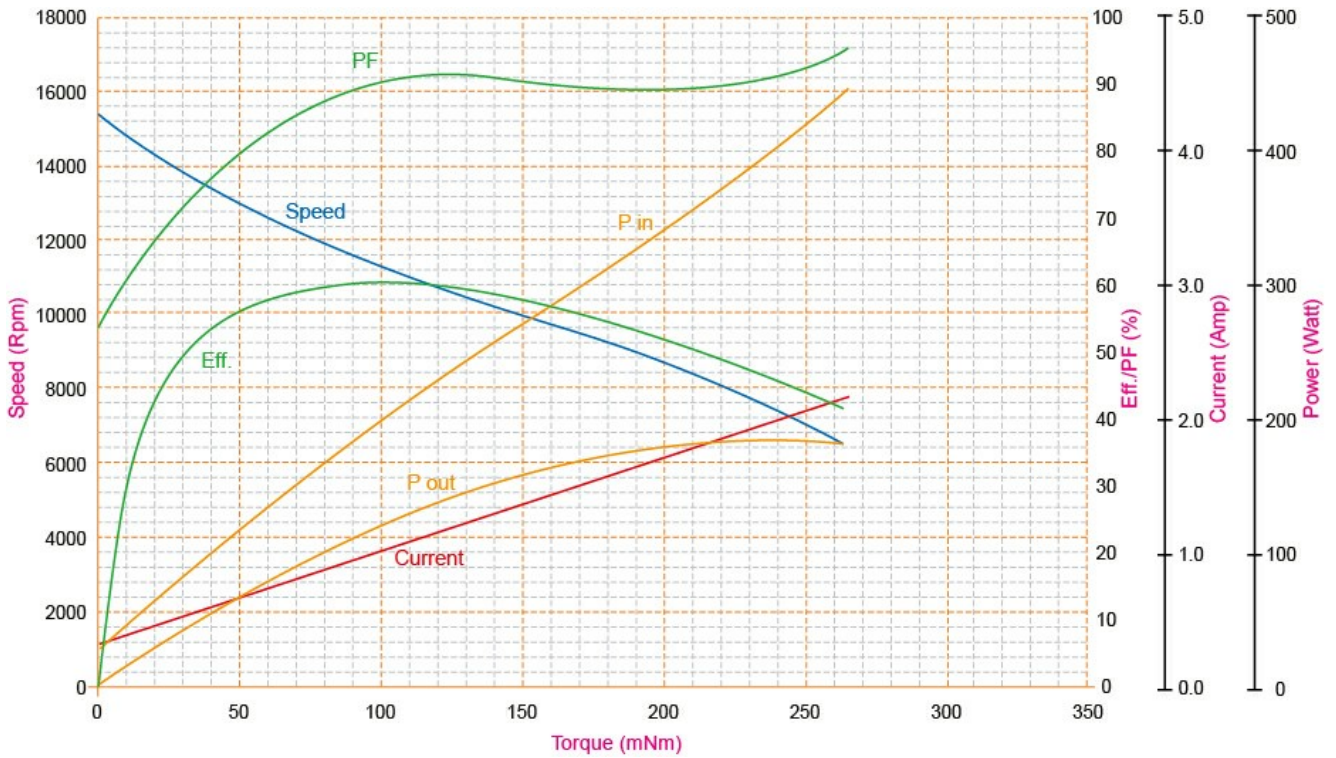
Performance Data:

	No Load	Stall	Maximum Efficiency	Maximum Power
Current (A)	0.22	-	1.02	-
Efficiency (%)	-	-	60	-
Output Power (W)	-	-	120.04	-
Speed (rpm)	15639	-	11385	-
Torque (mNm)	-	-	98.93	-

Outline Drawing:



Performance Curves:



Units in Metric

Characteristics:

High Power, High Efficiency

Specifications:

Dimensions	: Ø 44.7 X 75.6 mm
Shaft Diameter	: Ø 5.000 mm
Input Voltage	: 230.0 V DC
Rectified	: Rectified
No Load Speed	: 15633 rpm
Maximum Efficiency	: 68%
Torque at Maximum Efficiency	: 96.99 mNm
Speed at Maximum Efficiency	: 12009 rpm
Other Features	: Plate rating power 700Wi for 5-10 seconds
Weight	: 420 g
Operating Temperature Range	: -10 to 55 °C
Storage Temperature Range	: -20 to 80 °C
Electrical Connection	: Terminal



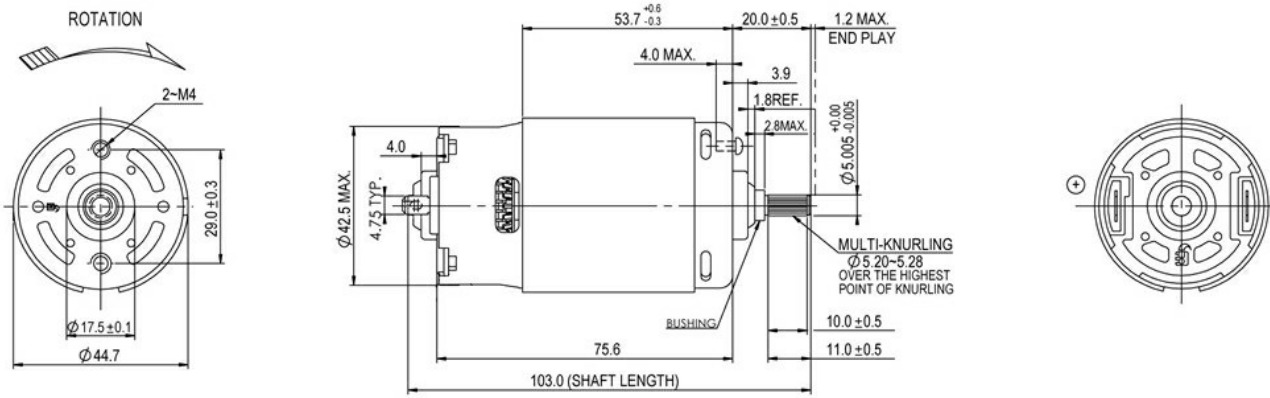
Performance Data:

	No Load	Stall	Maximum Efficiency	Maximum Power
Current (A)	0.15	-	0.93	-
Efficiency (%)	-	-	68	-
Output Power (W)	-	-	123.88	-
Speed (rpm)	15633	-	12009	-
Torque (mNm)	-	-	96.99	-

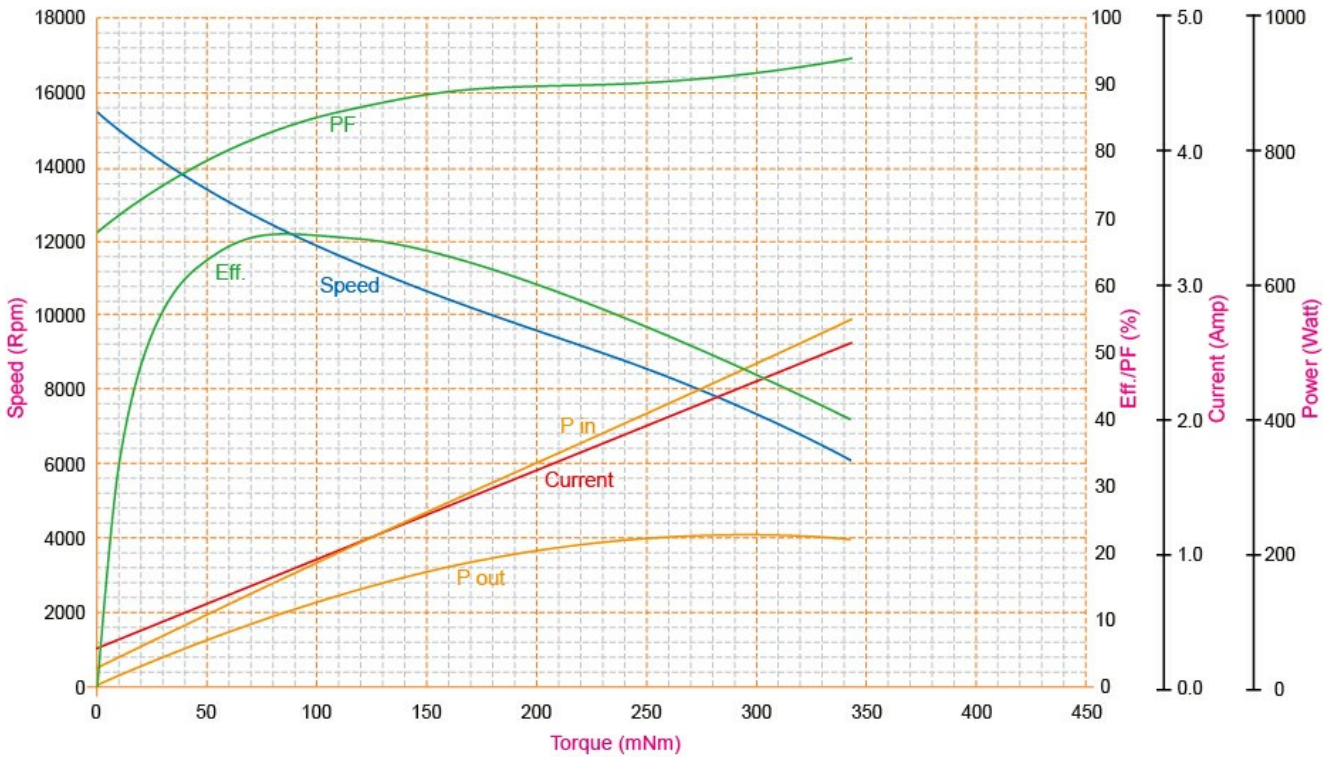
Application Examples:

Hand Blenders

Outline Drawing:



Performance Curves:



Units in Metric

Characteristics:

High Power, High Efficiency

Specifications:

Dimensions	: Ø 45.3 X 75.3 mm
Shaft Diameter	: Ø 5.000 mm
Input Voltage	: 230.0 V DC
Rectified	: Rectified
No Load Speed	: 14751 rpm
Maximum Efficiency	: 70%
Torque at Maximum Efficiency	: 98.00 mNm
Speed at Maximum Efficiency	: 11558 rpm
Other Features	: Plate rating power 850Wi for 5-10 seconds
Life Test Condition	: 55
Weight	: 435 g
Operating Temperature Range	: -10 to 55 °C
Storage Temperature Range	: -20 to 80 °C
Electrical Connection	: Terminal



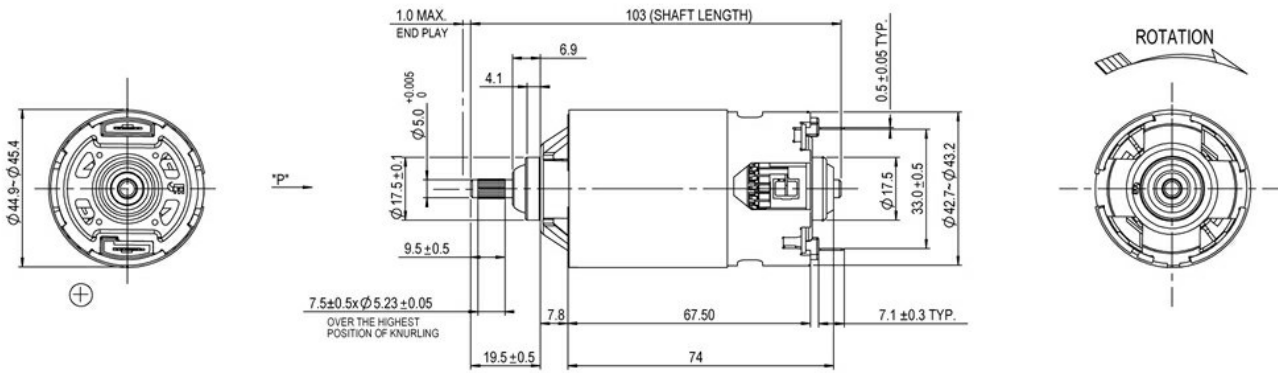
Performance Data:

	No Load	Stall	Maximum Efficiency	Maximum Power
Current (A)	0.13	-	0.89	-
Efficiency (%)	-	-	70	-
Output Power (W)	-	-	121.44	-
Speed (rpm)	14751	-	11558	-
Torque (mNm)	-	-	98.00	-

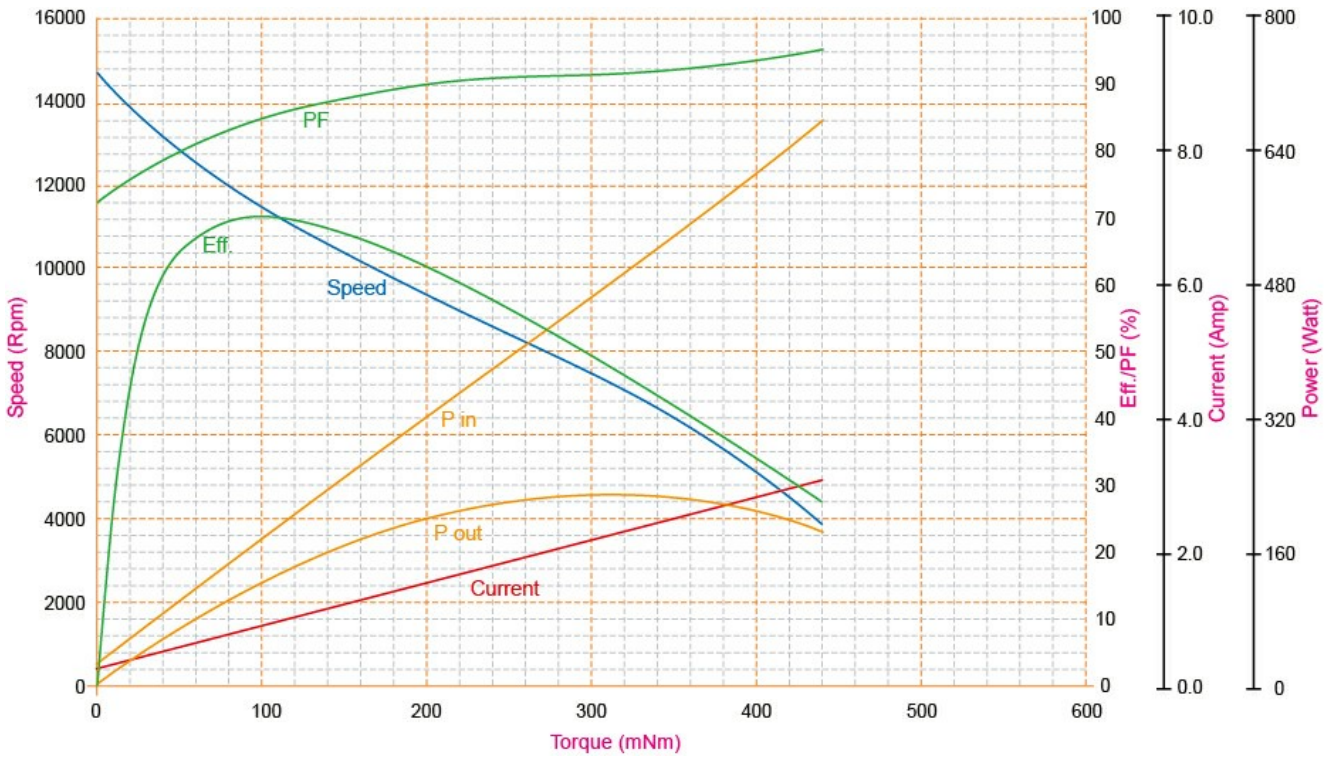
Application Examples:

Hand Blenders

Outline Drawing:



Performance Curves:



Units in Metric

Characteristics:

High Power, High Efficiency

Specifications:

Dimensions	: Ø 45.3 X 85.3 mm
Shaft Diameter	: Ø 5.000 mm
Input Voltage	: 230.0 V DC
Rectified	: Rectified
No Load Speed	: 13640 rpm
Maximum Efficiency	: 70%
Torque at Maximum Efficiency	: 100.00 mNm
Speed at Maximum Efficiency	: 10625 rpm
Other Features	: Plate rating power 1000Wi for 5-10 seconds
Weight	: 490 g
Operating Temperature Range	: -10 to 55 °C
Storage Temperature Range	: -20 to 80 °C
Electrical Connection	: Terminal



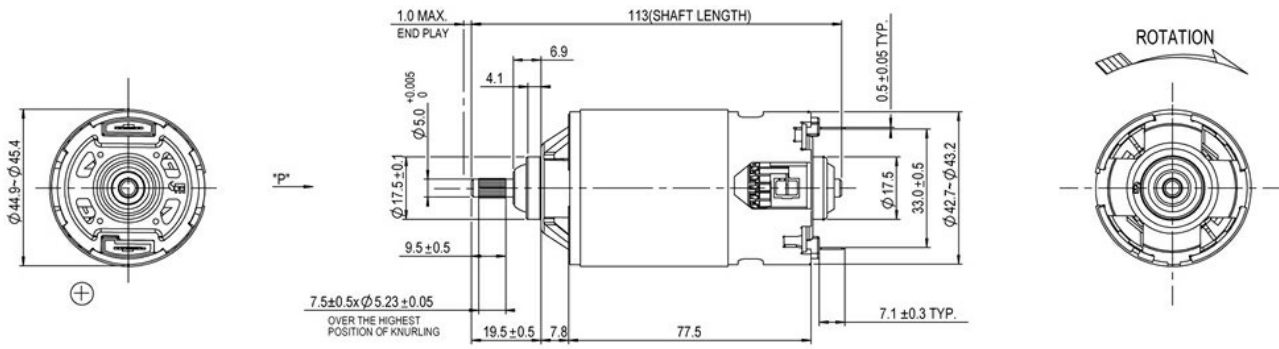
Performance Data:

	No Load	Stall	Maximum Efficiency	Maximum Power
Current (A)	0.13	-	0.81	-
Efficiency (%)	-	-	70	-
Output Power (W)	-	-	112.22	-
Speed (rpm)	13640	-	10625	-
Torque (mNm)	-	-	100.00	-

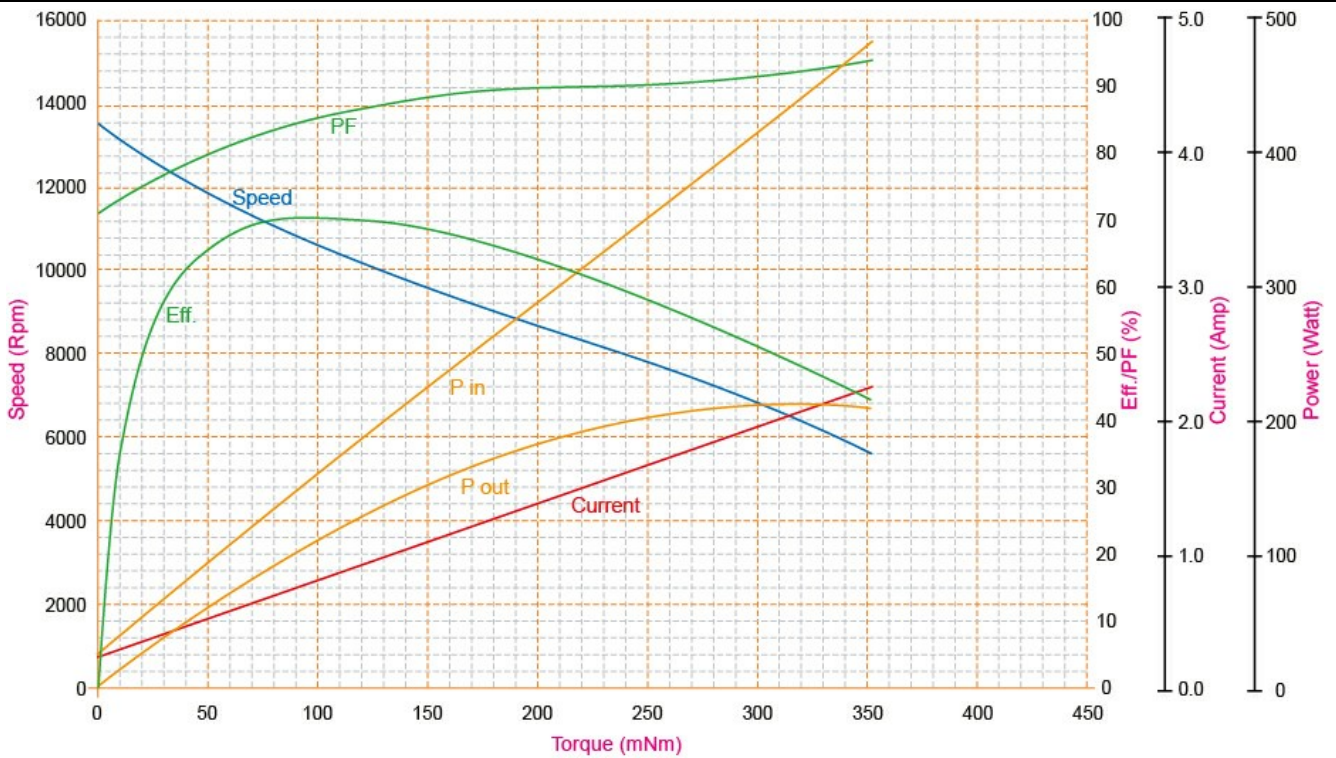
Application Examples:

Hand Blenders

Outline Drawing:



Performance Curves:



Units in Metric

Characteristics:

High torque HVDC motor

Specifications:

Dimensions	: Ø 44.7 mm
Length	: 75.60 mm
Input Voltage	: 120.0 V AC
Shaft Diameter	: Ø 5.005 mm
No Load Speed	: 13800 rpm
No Load Current	: 0.24 A
Nominal Speed	: 10700 rpm
Nominal Torque	: 103.00 mNm
Nominal Current	: 1.60 A
Life (Typical)	: 50 hr
Weight	: 415 g
Operating Temperature Range	: -10 to 55 °C
Storage Temperature Range	: -20 to 80 °C
Electrical Connection	: Terminals



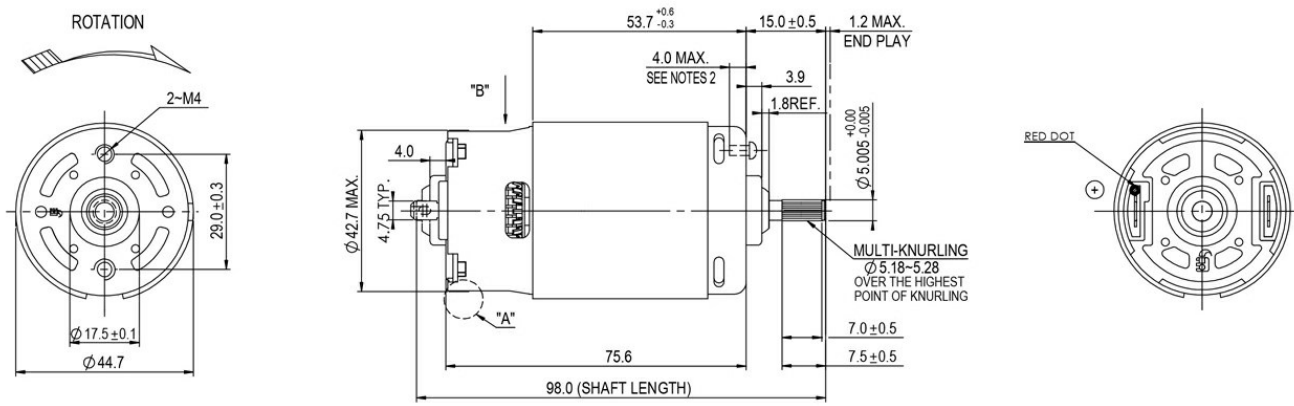
Performance Data:

	No Load	Stall	Maximum Efficiency	Maximum Power
Current (A)	0.24	-	1.60	3.99
Efficiency (%)	-	-	70	4
Output Power (W)	-	-	117.00	214.00
Speed (rpm)	13800	-	10700	6500
Torque (mNm)	-	-	103.00	317.00

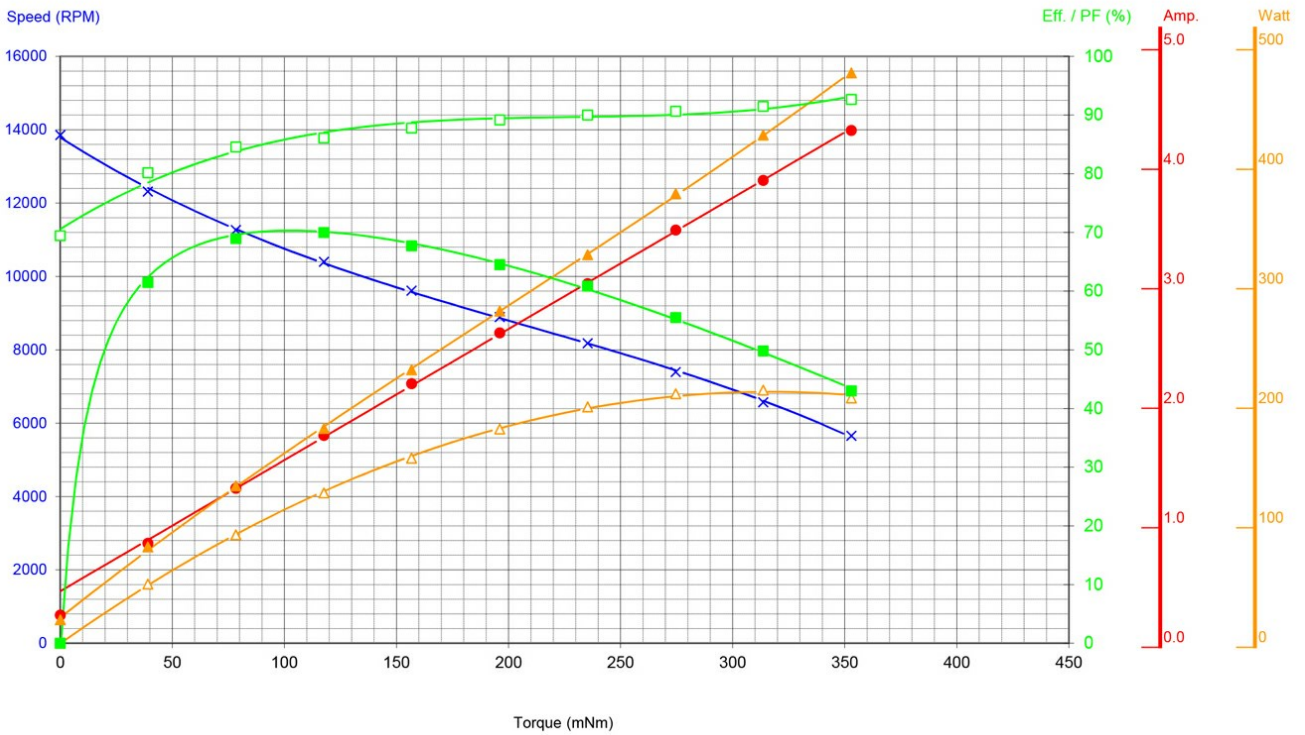
Application Examples:

Blenders

Outline Drawing:



Performance Curves:



Units in Metric

Characteristics:

High torque HVDC motor

Specifications:

Dimensions	: Ø 44.7 mm
Length	: 75.60 mm
Input Voltage	: 230.0 V AC
Shaft Diameter	: Ø 5.005 mm
No Load Speed	: 14000 rpm
No Load Current	: 0.13 A
Nominal Speed	: 10500 rpm
Nominal Torque	: 110.00 mNm
Nominal Current	: 0.93 A
Life (Typical)	: 50 hr
Weight	: 415 g
Operating Temperature Range	: -10 to 55 °C
Storage Temperature Range	: -20 to 80 °C
Electrical Connection	: Terminals



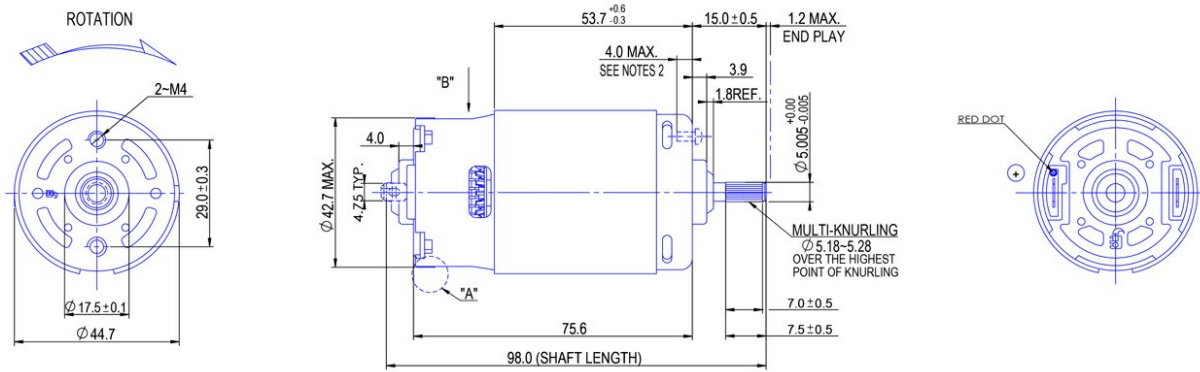
Performance Data:

	No Load	Stall	Maximum Efficiency	Maximum Power
Current (A)	0.13	-	0.93	2.10
Efficiency (%)	-	-	67	48
Output Power (W)	-	-	125.00	214.00
Speed (rpm)	14000	-	10500	6600
Torque (mNm)	-	-	110.00	312.00

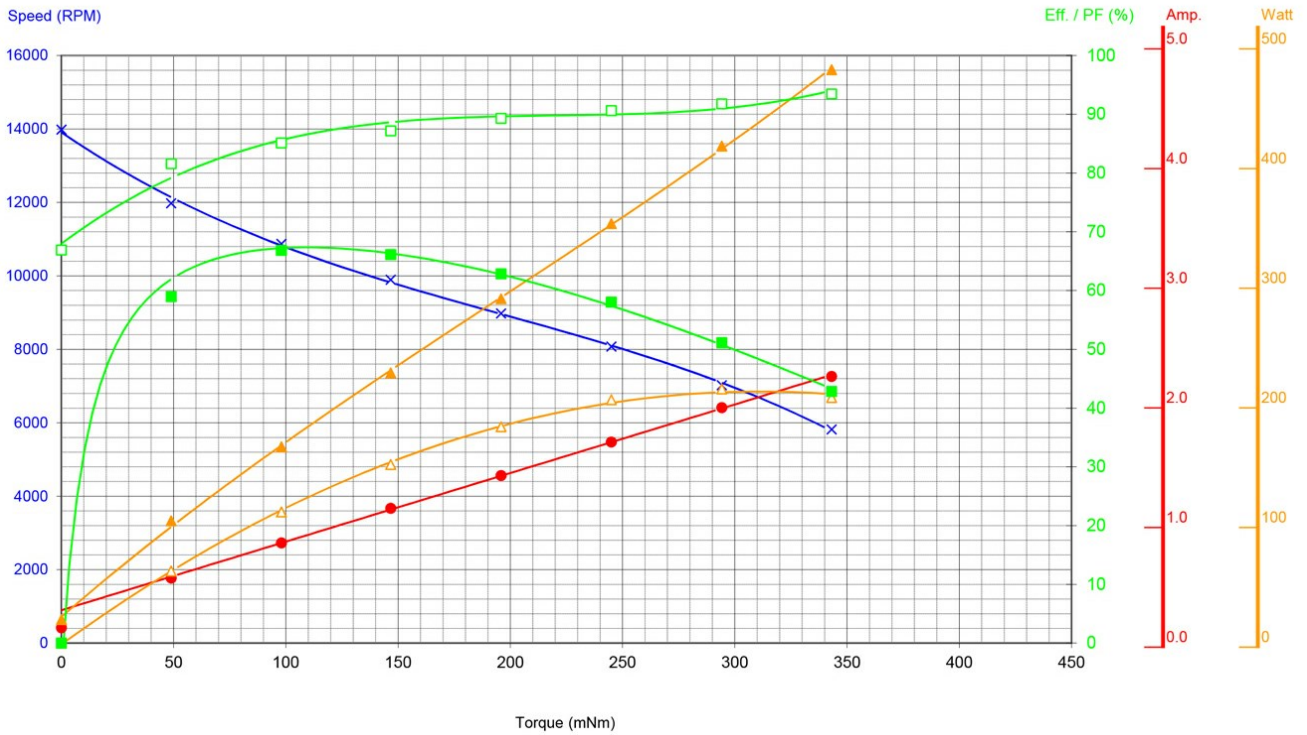
Application Examples:

Blenders

Outline Drawing:



Performance Curves:



Units in Metric

Characteristics:

High Torque HVDC Motor

Specifications:

Diameter	: 44.70 mm
Length	: 75.60 mm
Shaft Diameter	: Ø 5.005 mm
Input Voltage	: 230.0 V AC
No Load Speed	: 16000 rpm
No Load Current	: 0.14 A
Nominal Speed	: 11000 rpm
Nominal Torque	: 96.50 mNm
Nominal Current	: 0.96 A
Life (Typical)	: 50 hr
Weight	: 400 g
Operating Temperature Range	: -10 to 55 °C
Storage Temperature Range	: -20 to 80 °C
Electrical Connection	: Terminals



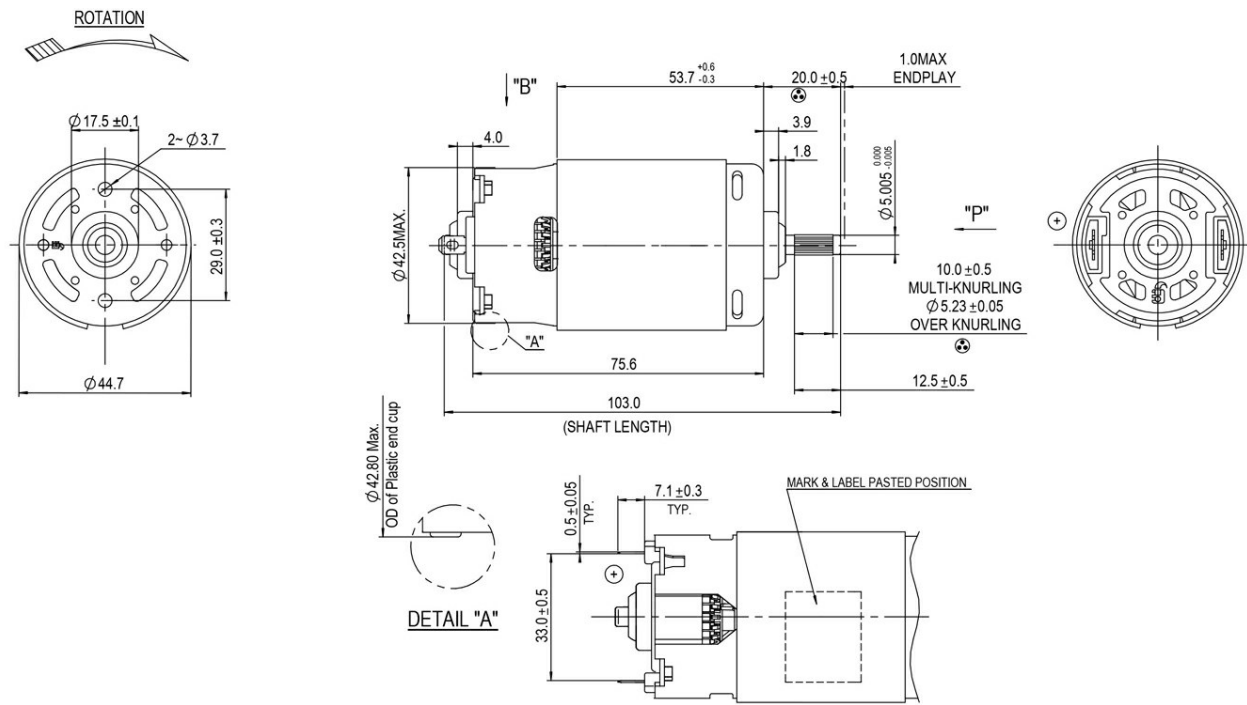
Performance Data:

	No Load	Stall	Maximum Efficiency	Maximum Power
Current (A)	0.14	-	0.96	-
Efficiency (%)	-	-	61	-
Output Power (W)	-	-	119.50	-
Speed (rpm)	16000	-	11000	-
Torque (mNm)	-	-	96.50	-

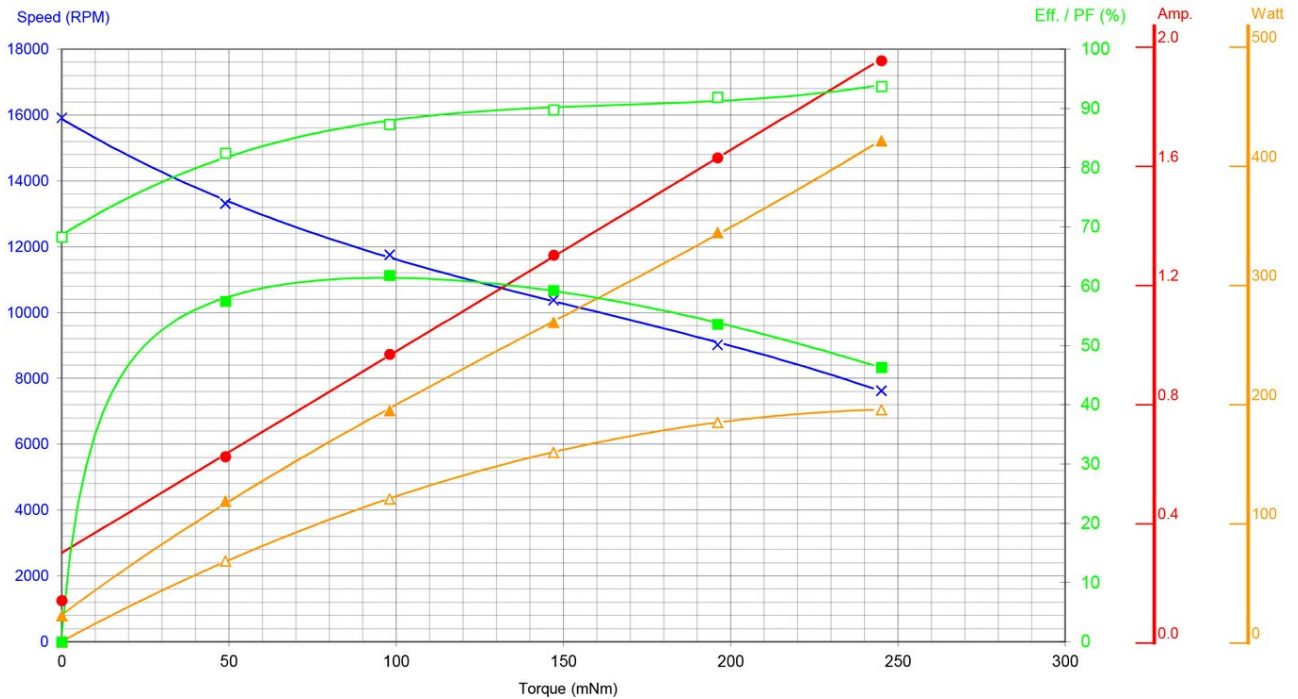
Application Examples:

Hand Blenders

Outline Drawing:



Performance Curves:



Units in Metric

Characteristics:

High Power HVDC motor

Specifications:

Dimensions	: Ø 42.5 X 75.6 mm
Shaft Diameter	: Ø 5.000 mm
Input Voltage	: 120.0 V DC
Rectified	: Rectified
No Load Speed	: 11700 rpm
Maximum Efficiency	: 62%
Torque at Maximum Efficiency	: 90.00 mNm
Speed at Maximum Efficiency	: 8500 rpm
Weight	: 370 g
Operating Temperature Range	: -10 to 50 °C
Storage Temperature Range	: -20 to 80 °C
Electrical Connection	: Terminals



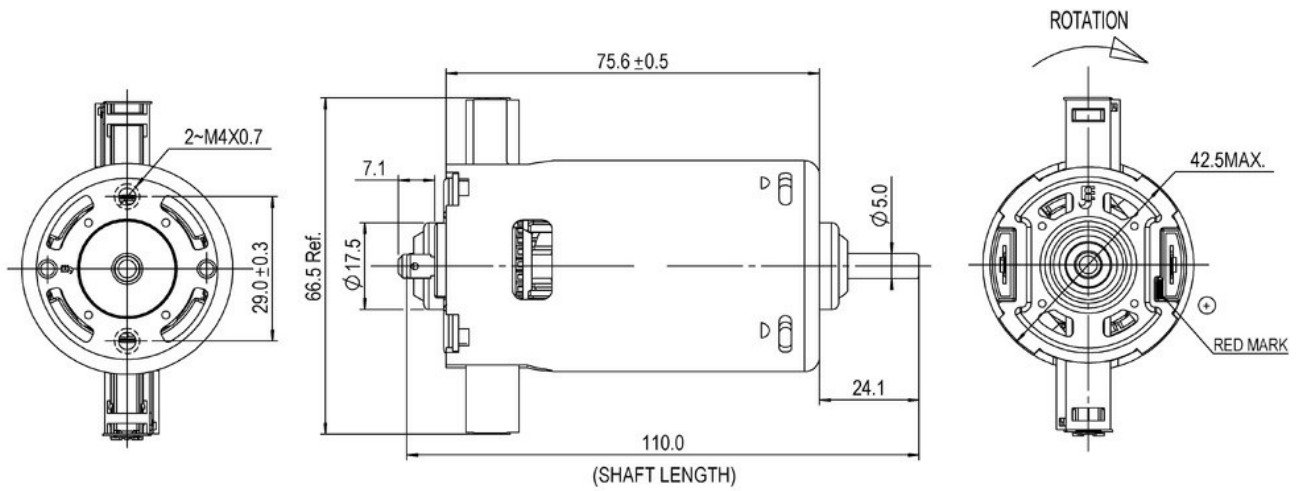
Performance Data:

	No Load	Stall	Maximum Efficiency	Maximum Power
Current (A)	0.30	-	1.20	-
Efficiency (%)	-	-	62	-
Output Power (W)	-	-	78.50	-
Speed (rpm)	11700	-	8500	-
Torque (mNm)	-	-	90.00	-

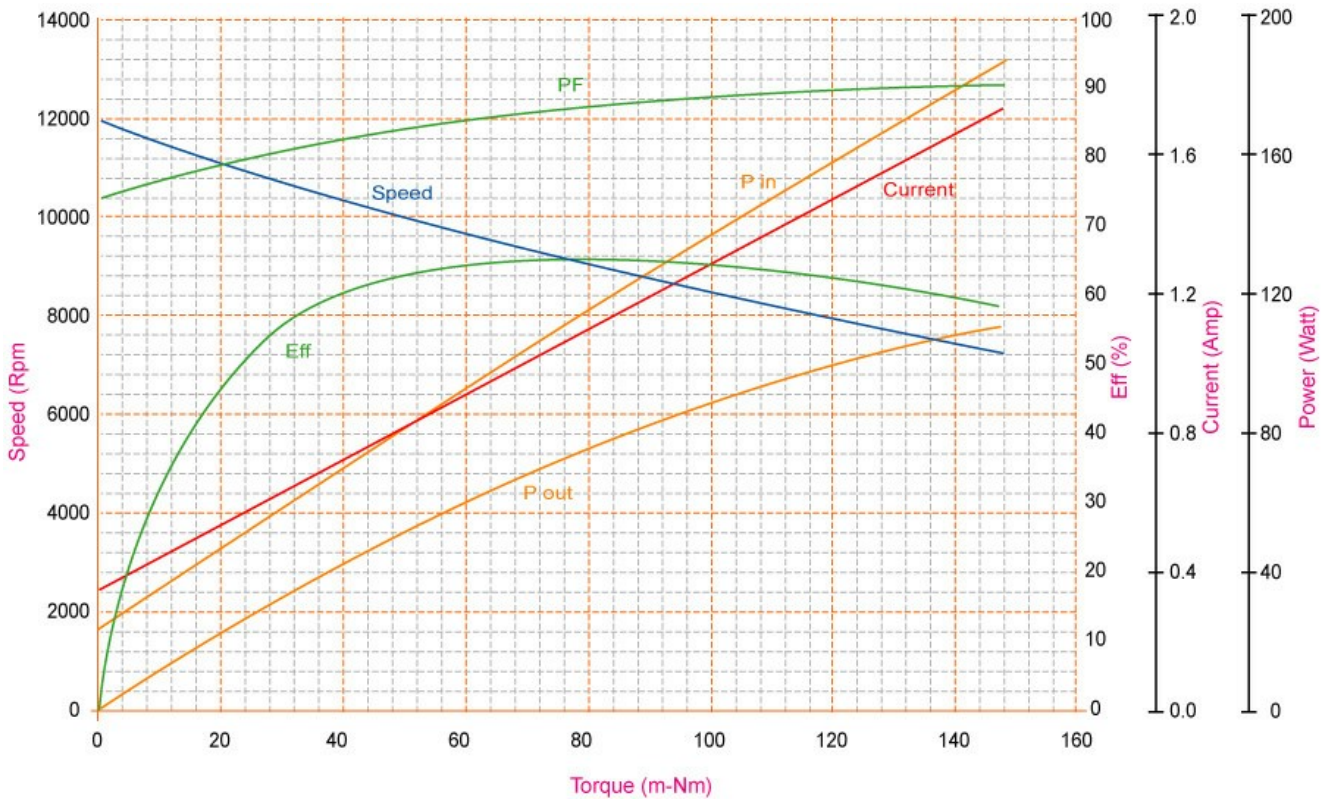
Application Examples:

Brush Roll and Power Brushes

Outline Drawing:



Performance Curves:



Units in Metric

Characteristics:

DC700# platform with 70W_o output power and long life 600hrs

Specifications:

Dimensions	: Ø 42.2 X 75.6 mm
Shaft Diameter	: Ø 5.000 mm
Input Voltage	: 240.0 V DC
Rectified	: Rectified
No Load Speed	: 13600 rpm
Maximum Efficiency	: 72%
Torque at Maximum Efficiency	: 90.00 mNm
Speed at Maximum Efficiency	: 11500 rpm
Noise Level	: 76 dB(A)
Life (Typical)	: 600 hr
Life Test Condition	: Rectified input with E-capacitor
Weight	: 372 g
Operating Temperature Range	: 0 to 40 °C
Storage Temperature Range	: -10 to 50 °C
Electrical Connection	: terminal



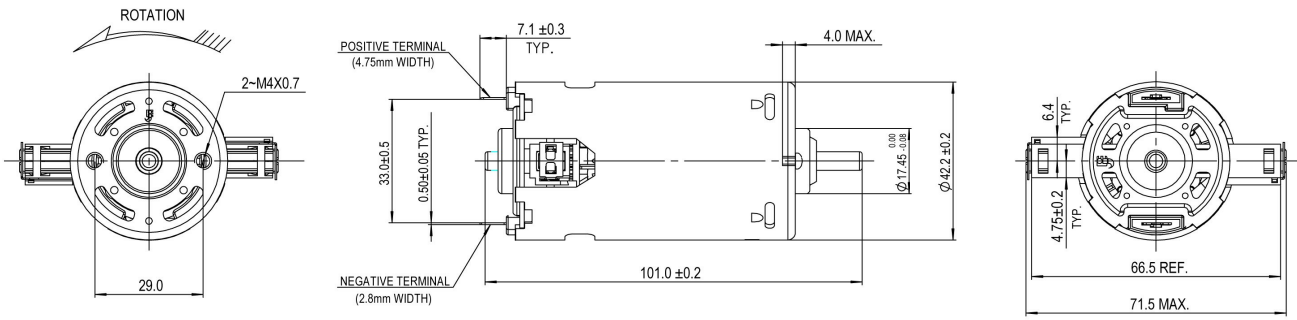
Performance Data:

	No Load	Stall	Maximum Efficiency	Maximum Power
Current (A)	0.43	-	1.38	-
Efficiency (%)	-	-	72	-
Output Power (W)	-	-	108.00	-
Speed (rpm)	13600	-	11500	-
Torque (mNm)	-	-	90.00	-

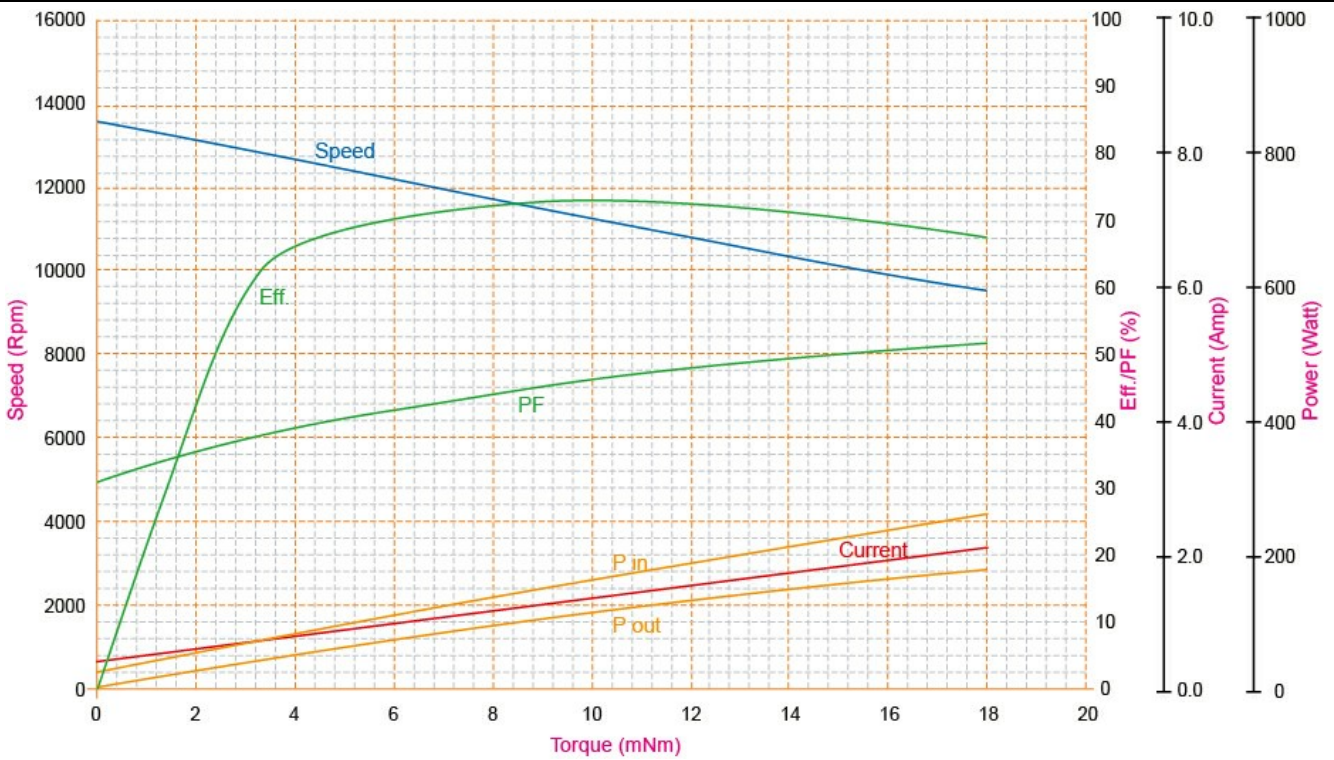
Application Examples:

Brush Roll and Power Brushes

Outline Drawing:



Performance Curves:



Units in Metric

Characteristics:

DC700# platform with 70W_o output power and long life 600hrs

Specifications:

Dimensions	: Ø 42.2 X 75.6 mm
Shaft Diameter	: Ø 5.000 mm
Input Voltage	: 120.0 V DC
Rectified	: Rectified
No Load Speed	: 13850 rpm
Maximum Efficiency	: 66%
Torque at Maximum Efficiency	: 104.00 mNm
Speed at Maximum Efficiency	: 10400 rpm
Noise Level	: 76 dB(A)
Life (Typical)	: 600 hr
Life Test Condition	: Rectified input with E-capacitor
Weight	: 370 g
Operating Temperature Range	: 0 to 40 °C
Storage Temperature Range	: -10 to 50 °C
Electrical Connection	: terminal



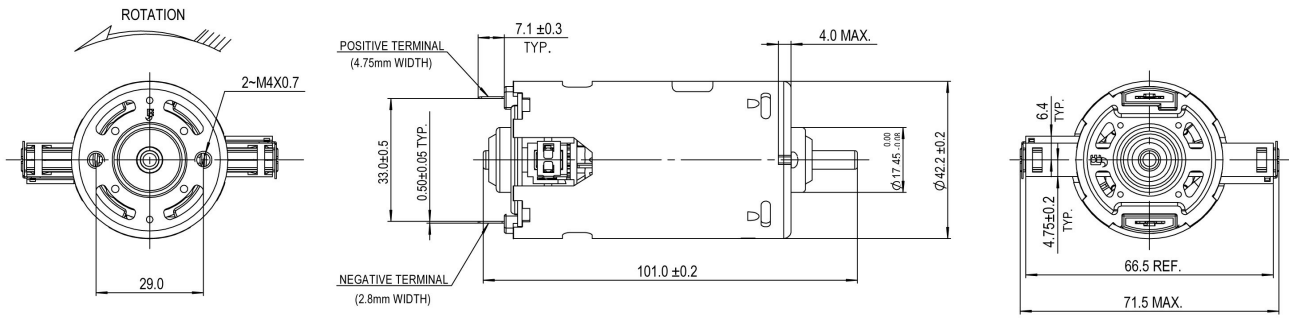
Performance Data:

	No Load	Stall	Maximum Efficiency	Maximum Power
Current (A)	0.73	-	2.55	-
Efficiency (%)	-	-	66	-
Output Power (W)	-	-	114.00	-
Speed (rpm)	13850	-	10400	-
Torque (mNm)	-	-	104.00	-

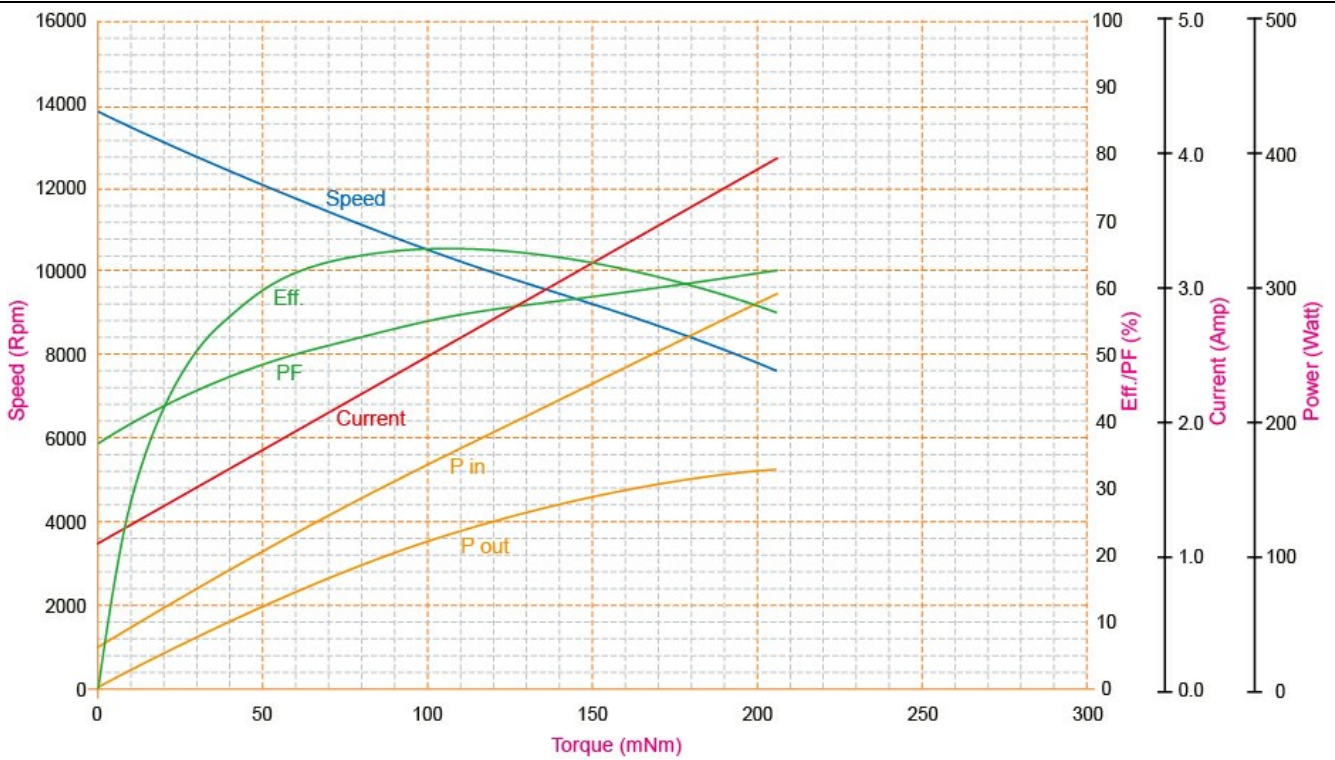
Application Examples:

Brush Roll and Power Brushes

Outline Drawing:



Performance Curves:



Units in Metric

Characteristics:

High Power High Voltage DC Motor

Specifications:

Dimensions	: Ø 42.5 X 76.5 mm
Shaft Diameter	: Ø 5.000 mm
Input Voltage	: 230.0 V DC
Rectified	: Rectified
No Load Speed	: 6089 rpm
Maximum Efficiency	: 54%
Torque at Maximum Efficiency	: 58.20 mNm
Speed at Maximum Efficiency	: 4298 rpm
Weight	: 379 g
Operating Temperature Range	: -10 to 55 °C
Storage Temperature Range	: -20 to 80 °C
Electrical Connection	: Terminal



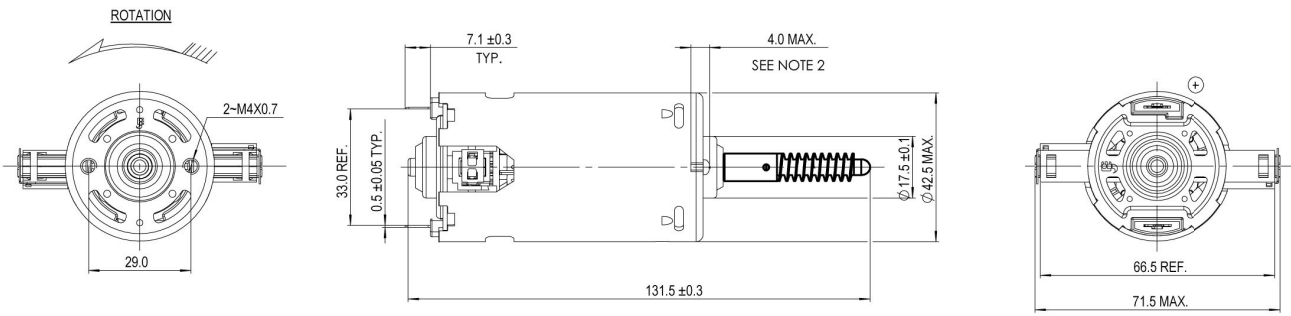
Performance Data:

	No Load	Stall	Maximum Efficiency	Maximum Power
Current (A)	0.07	-	0.23	-
Efficiency (%)	-	-	54	-
Output Power (W)	-	-	25.85	-
Speed (rpm)	6089	-	4298	-
Torque (mNm)	-	-	58.20	-

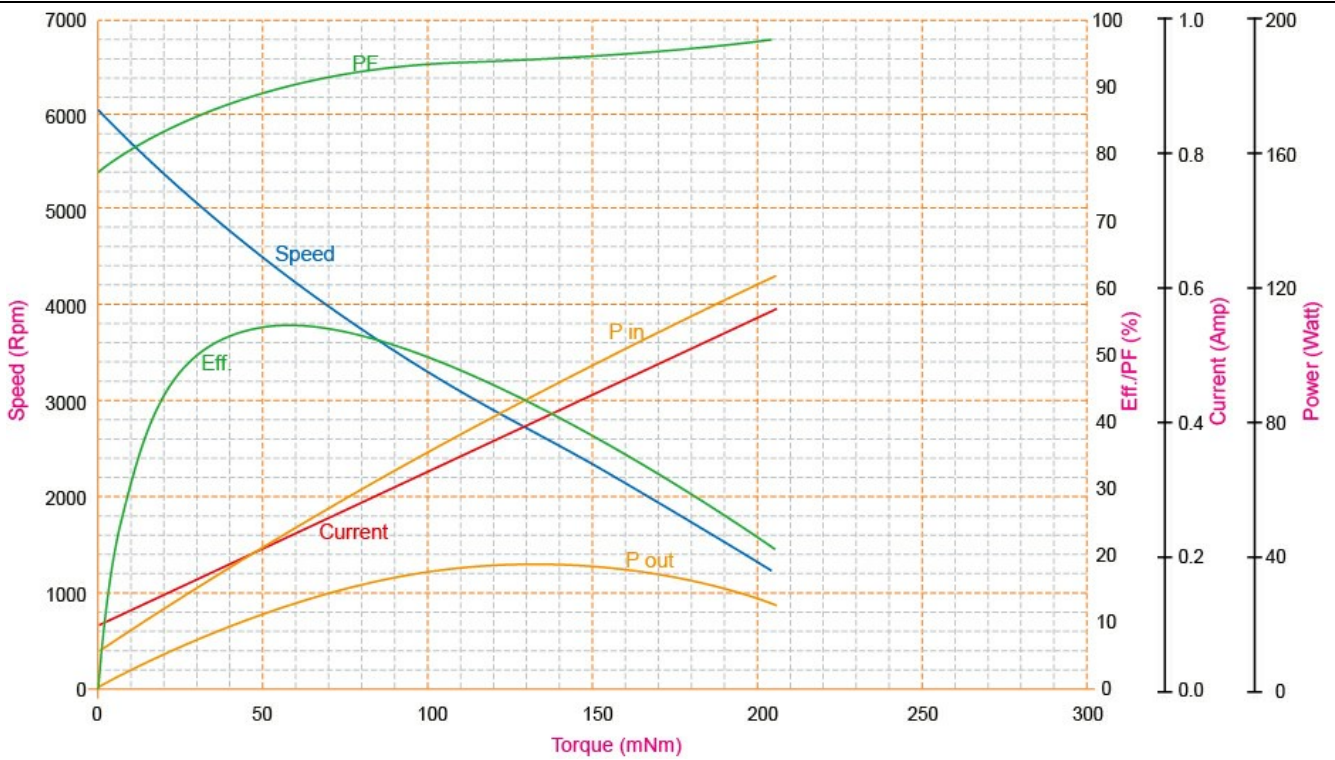
Application Examples:

Brewing, Coffee Machines

Outline Drawing:



Performance Curves:



Units in Metric

Characteristics:

High torque HVDC motor

Specifications:

Dimensions	: Ø 44.7 mm
Length	: 75.60 mm
Input Voltage	: 120.0 V AC
Shaft Diameter	: Ø 5.005 mm
No Load Speed	: 12000 rpm
No Load Current	: 0.33 A
Nominal Speed	: 8800 rpm
Nominal Torque	: 85.50 mNm
Nominal Current	: 1.30 A
Life (Typical)	: 300 hr
Weight	: 420 g
Operating Temperature Range	: -10 to 55 °C
Storage Temperature Range	: -20 to 80 °C
Electrical Connection	: Leadwires
Certification	: UL E60303



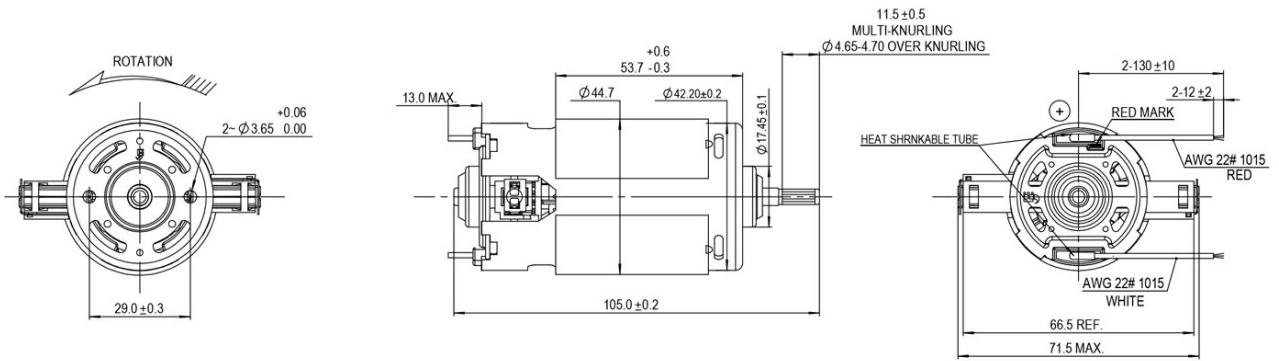
Performance Data:

	No Load	Stall	Maximum Efficiency	Maximum Power
Current (A)	0.33	-	1.30	2.34
Efficiency (%)	-	-	56	44
Output Power (W)	-	-	80.00	117.00
Speed (rpm)	12000	-	8800	5800
Torque (mNm)	-	-	85.50	195.00

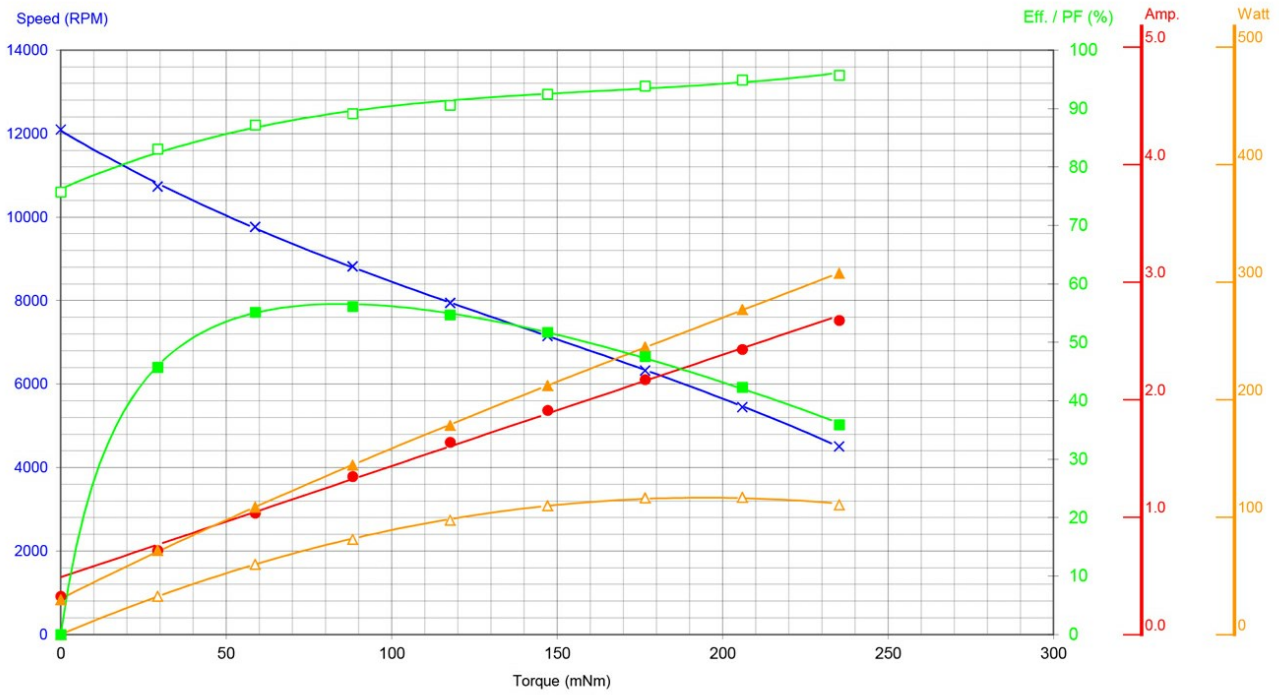
Application Examples:

Brush Roll and Power Brushes

Outline Drawing:



Performance Curves:



Units in Metric

Characteristics:

High torque HVDC motor

Specifications:

Dimensions	: Ø 44.7 mm
Length	: 75.60 mm
Input Voltage	: 230.0 V AC
Shaft Diameter	: Ø 5.005 mm
No Load Speed	: 12000 rpm
No Load Current	: 0.18 A
Nominal Speed	: 9000 rpm
Nominal Torque	: 98.00 mNm
Nominal Current	: 0.75 A
Life (Typical)	: 300 hr
Weight	: 420 g
Operating Temperature Range	: -10 to 55 °C
Storage Temperature Range	: -20 to 80 °C
Electrical Connection	: Leadwires



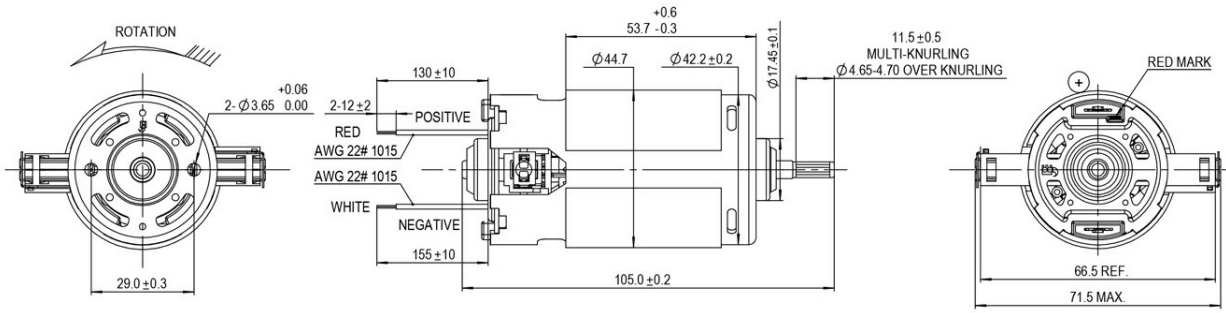
Performance Data:

	No Load	Stall	Maximum Efficiency	Maximum Power
Current (A)	0.18	-	0.75	1.50
Efficiency (%)	-	-	62	47
Output Power (W)	-	-	95.00	150.00
Speed (rpm)	12000	-	9000	5800
Torque (mNm)	-	-	98.00	250.00

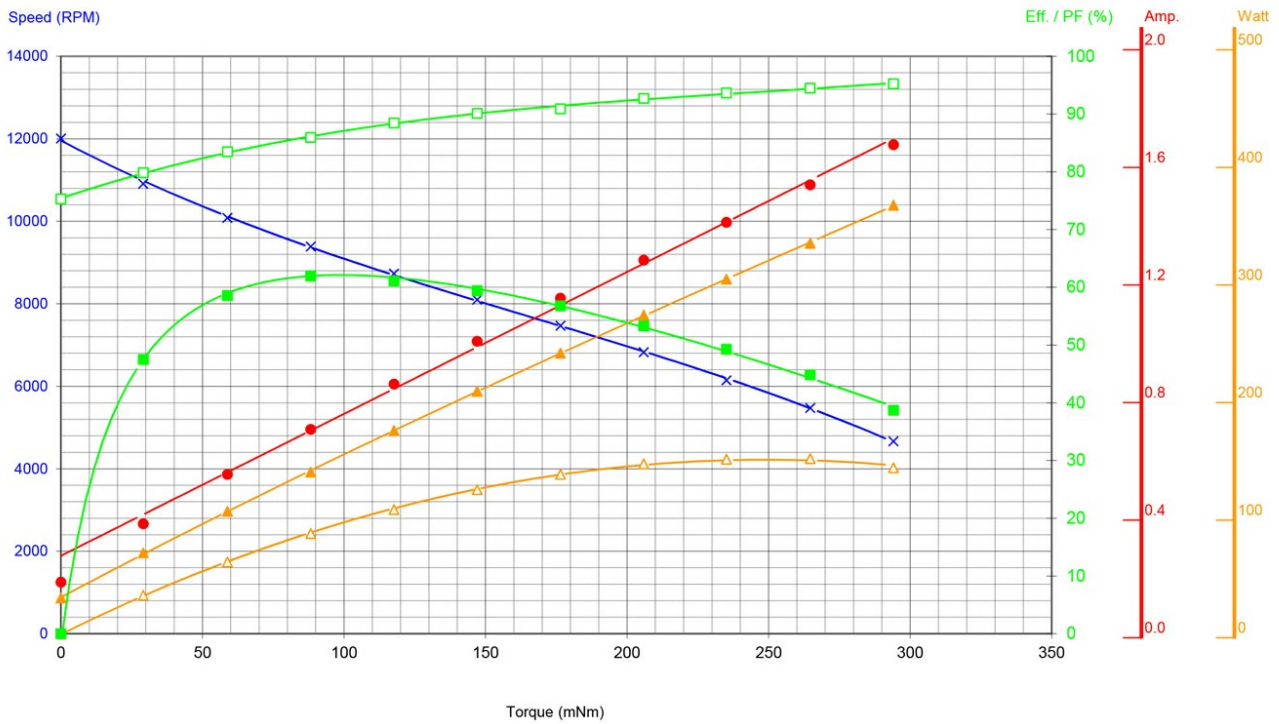
Application Examples:

Brush Roll and Power Brushes

Outline Drawing:



Performance Curves:



Units in Metric

Characteristics:

150W output power, high efficiency

Specifications:

Dimensions	: Ø 48.5 X 83.0 mm
Shaft Diameter	: Ø 6.350 mm
Input Voltage	: 240.0 V DC
Rectified	: Rectified
No Load Speed	: 14800 rpm
Maximum Efficiency	: 69%
Torque at Maximum Efficiency	: 175.00 mNm
Speed at Maximum Efficiency	: 11300 rpm
Life (Typical)	: 600 hr
Life Test Condition	: Rectified input with E-capacitor
Weight	: 565 g
Operating Temperature Range	: 0 to 40 °C
Storage Temperature Range	: -20 to 85 °C
Electrical Connection	: Terminal



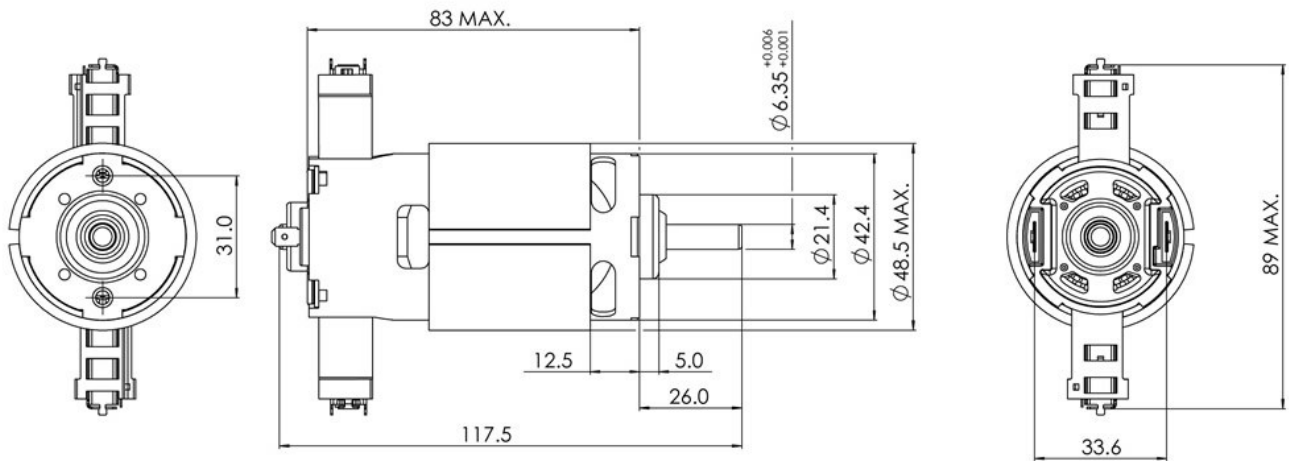
Performance Data:

	No Load	Stall	Maximum Efficiency	Maximum Power
Current (A)	0.75	-	2.50	-
Efficiency (%)	-	-	69	-
Output Power (W)	-	-	220.00	-
Speed (rpm)	14800	-	11300	-
Torque (mNm)	-	-	175.00	-

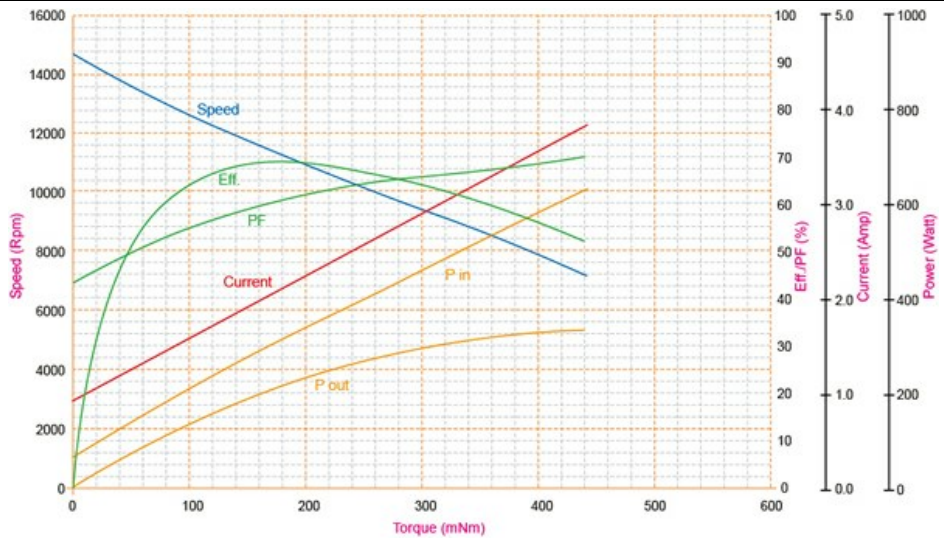
Application Examples:

Brush Roll and Power Brushes

Outline Drawing:



Performance Curves:



Units in Metric

Characteristics:

DC700 platform with 120W output power and 600 hours long life

Specifications:

Dimensions	: Ø 42.2 X 75.6 mm
Shaft Diameter	: Ø 5.000 mm
Input Voltage	: 120.0 V DC
Rectified	: Rectified
No Load Speed	: 13400 rpm
Maximum Efficiency	: 71%
Torque at Maximum Efficiency	: 111.00 mNm
Speed at Maximum Efficiency	: 10300 rpm
Life (Typical)	: 600 hr
Life Test Condition	: Rectified input with E-capacitor
Weight	: 370 g
Operating Temperature Range	: 0 to 40 °C
Storage Temperature Range	: -10 to 50 °C
Electrical Connection	: terminal

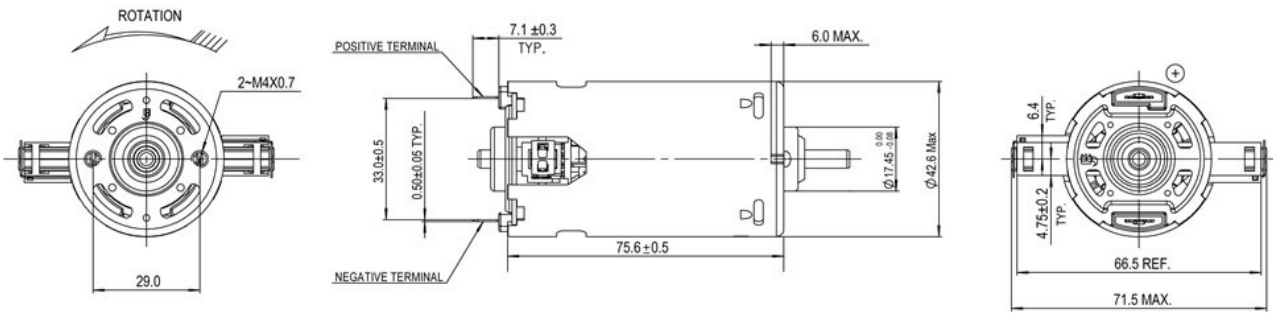
**Performance Data:**

	No Load	Stall	Maximum Efficiency	Maximum Power
Current (A)	0.84	-	2.81	-
Efficiency (%)	-	-	71	-
Output Power (W)	-	-	170.00	-
Speed (rpm)	13400	-	10300	-
Torque (mNm)	-	-	111.00	-

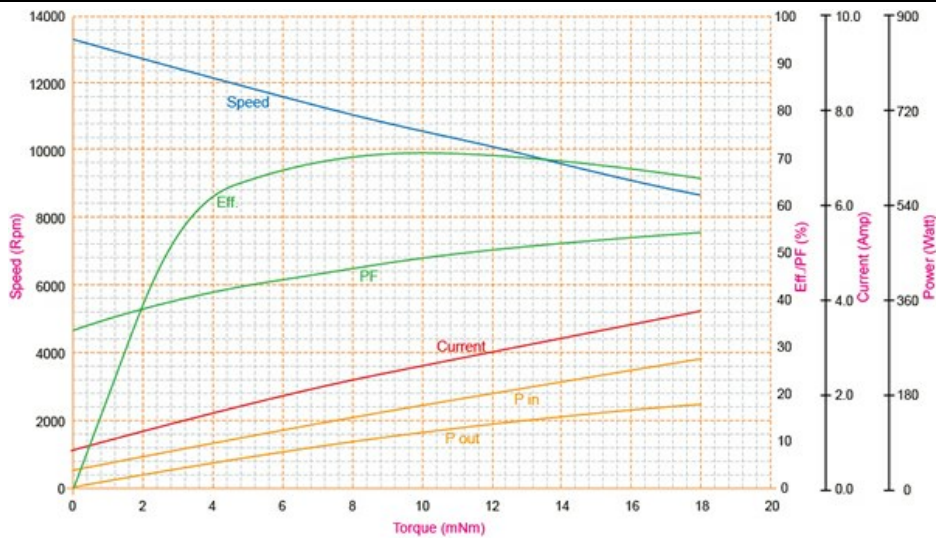
Application Examples:

Brush Roll and Power Brushes

Outline Drawing:



Performance Curves:



Units in Metric

Characteristics:

High Power HVDC motor

Specifications:

Dimensions	: Ø 42.5 X 66.0 mm
Shaft Diameter	: Ø 5.005 mm
Input Voltage	: 100.0 V DC
Rectified	: Rectified
No Load Speed	: 18121 rpm
Maximum Efficiency	: 63%
Maximum Output Power	: 131.02 W
Torque at Maximum Efficiency	: 58.25 mNm
Speed at Maximum Efficiency	: 13481 rpm
Weight	: 290 g
Operating Temperature Range	: -10 to 50 °C
Storage Temperature Range	: -20 to 80 °C
Electrical Connection	: Terminals



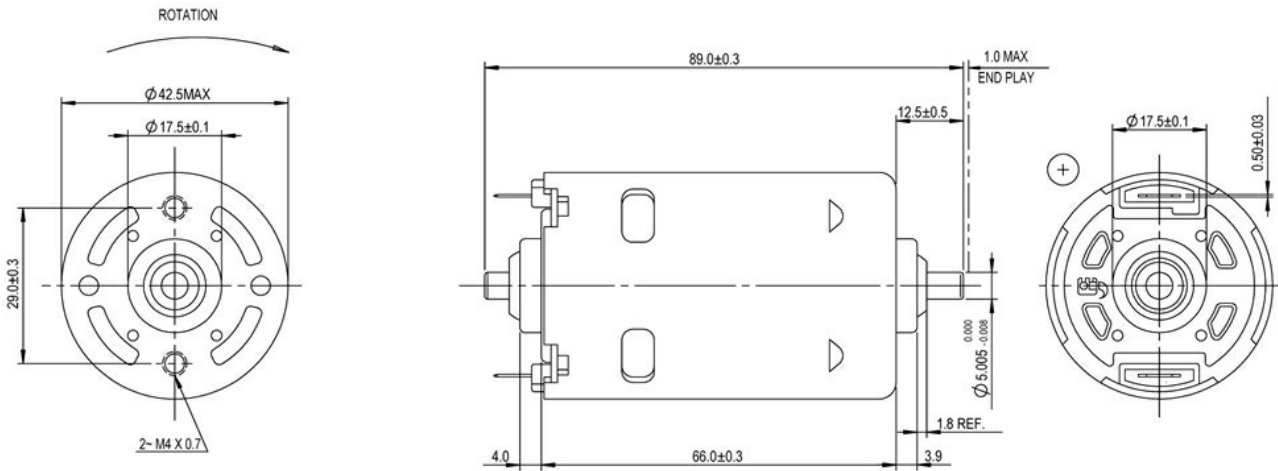
Performance Data:

	No Load	Stall	Maximum Efficiency	Maximum Power
Current (A)	0.32	-	1.48	3.17
Efficiency (%)	-	-	63	-
Output Power (W)	-	-	82.62	131.02
Speed (rpm)	18121	-	13481	8700
Torque (mNm)	-	-	58.25	145.10

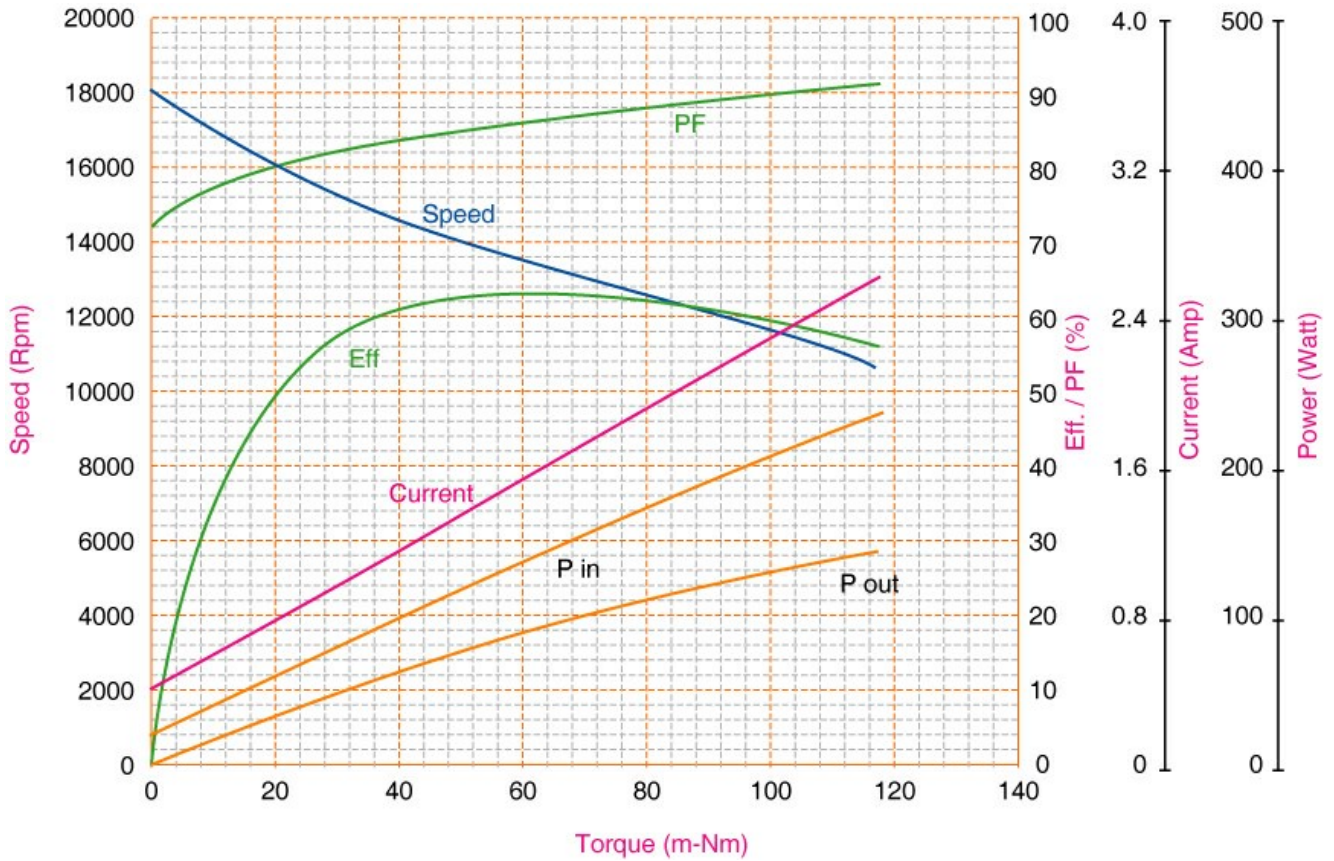
Application Examples:

Hedge Trimmers

Outline Drawing:



Performance Curves:



Units in Metric

Characteristics:

High Power, High Torque, High Efficiency

Specifications:

Dimensions	: Ø 42.5 X 66.0 mm
Shaft Diameter	: Ø 5.000 mm
Input Voltage	: 100.0 V DC
Rectified	: Rectified
No Load Speed	: 15858 rpm
Maximum Efficiency	: 58%
Torque at Maximum Efficiency	: 66.52 mNm
Speed at Maximum Efficiency	: 10787 rpm
Life (Typical)	: 50 hr
Life Test Condition	: 1 min ON / 5 min OFF
Weight	: 294 g
Operating Temperature Range	: -10 to 50 °C
Storage Temperature Range	: -20 to 85 °C
Electrical Connection	: Terminal



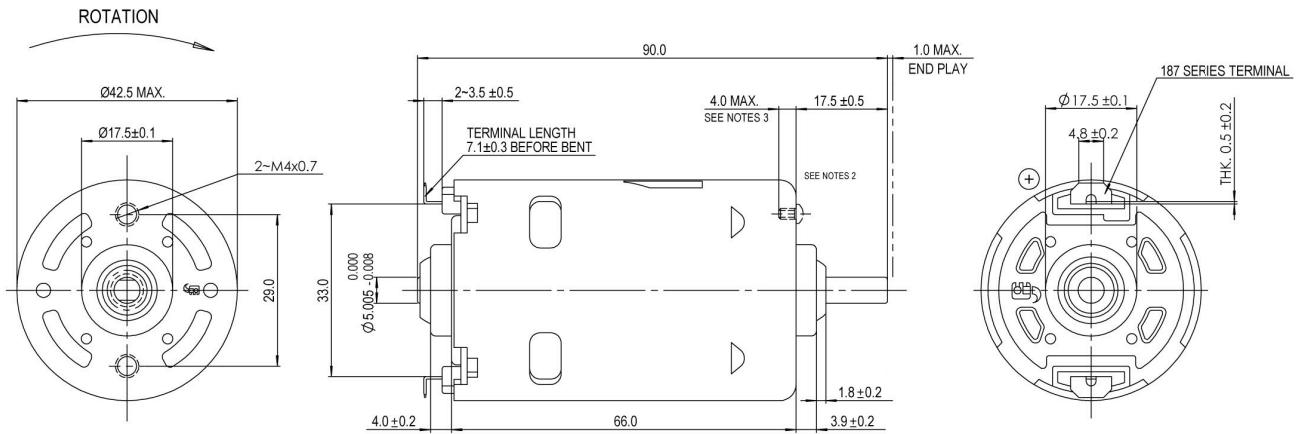
Performance Data:

	No Load	Stall	Maximum Efficiency	Maximum Power
Current (A)	0.27	-	1.41	-
Efficiency (%)	-	-	58	-
Output Power (W)	-	-	76.33	-
Speed (rpm)	15858	-	10787	-
Torque (mNm)	-	-	66.52	-

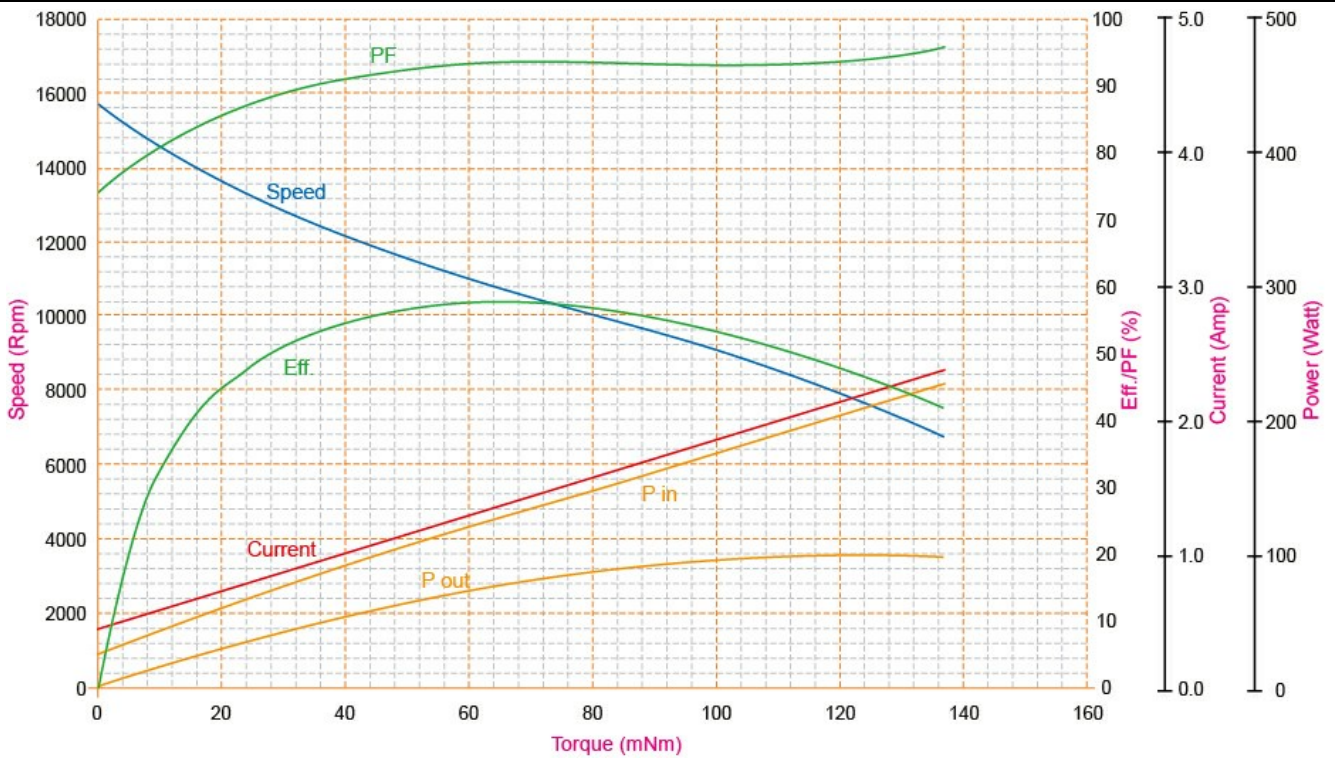
Application Examples:

Grinders

Outline Drawing:



Performance Curves:



Units in Metric

Characteristics:

Compact, High Reliability

Specifications:

Dimensions	: Ø 42.5 X 66.0 mm
Shaft Diameter	: Ø 5.000 mm
Input Voltage	: 230.0 V DC
Rectified	: Rectified
No Load Speed	: 13324 rpm
Maximum Efficiency	: 57%
Torque at Maximum Efficiency	: 52.61 mNm
Speed at Maximum Efficiency	: 9577 rpm
Operating Temperature Range	: -10 to 50 °C
Storage Temperature Range	: -20 to 80 °C
Electrical Connection	: Terminal



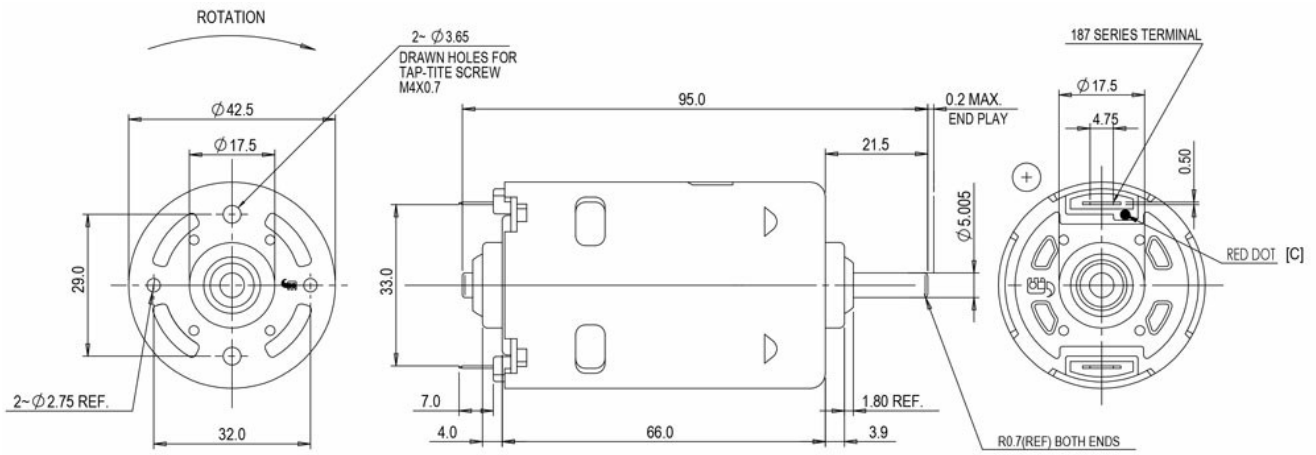
Performance Data:

	No Load	Stall	Maximum Efficiency	Maximum Power
Current (A)	0.11	-	0.45	-
Efficiency (%)	-	-	57	-
Output Power (W)	-	-	53.06	-
Speed (rpm)	13324	-	9577	-
Torque (mNm)	-	-	52.61	-

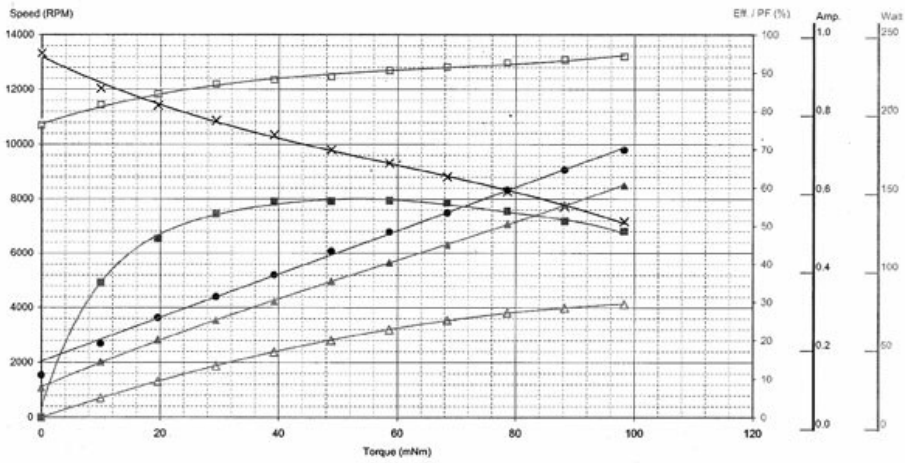
Application Examples:

Rotary Sanders

Outline Drawing:



Performance Curves:



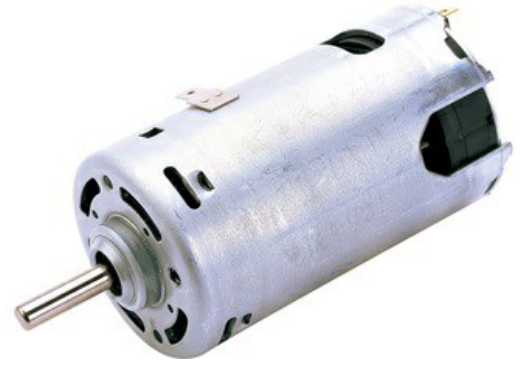
Units in Metric

Characteristics:

High Power HVDC motor

Specifications:

Dimensions	: Ø 42.4 X 75.6 mm
Shaft Diameter	: Ø 5.000 mm
Input Voltage	: 120.0 V DC
Rectified	: Rectified
No Load Speed	: 12700 rpm
No Load Current	: 0.20 A
Maximum Efficiency	: 63%
Maximum Output Power	: 46.60 W
Torque at Maximum Efficiency	: 69.00 mNm
Speed at Maximum Efficiency	: 9400 rpm
Life Test Condition	: 50
Weight	: 358 g
Operating Temperature Range	: -10 to 50 °C
Storage Temperature Range	: -20 to 80 °C
Electrical Connection	: Terminals



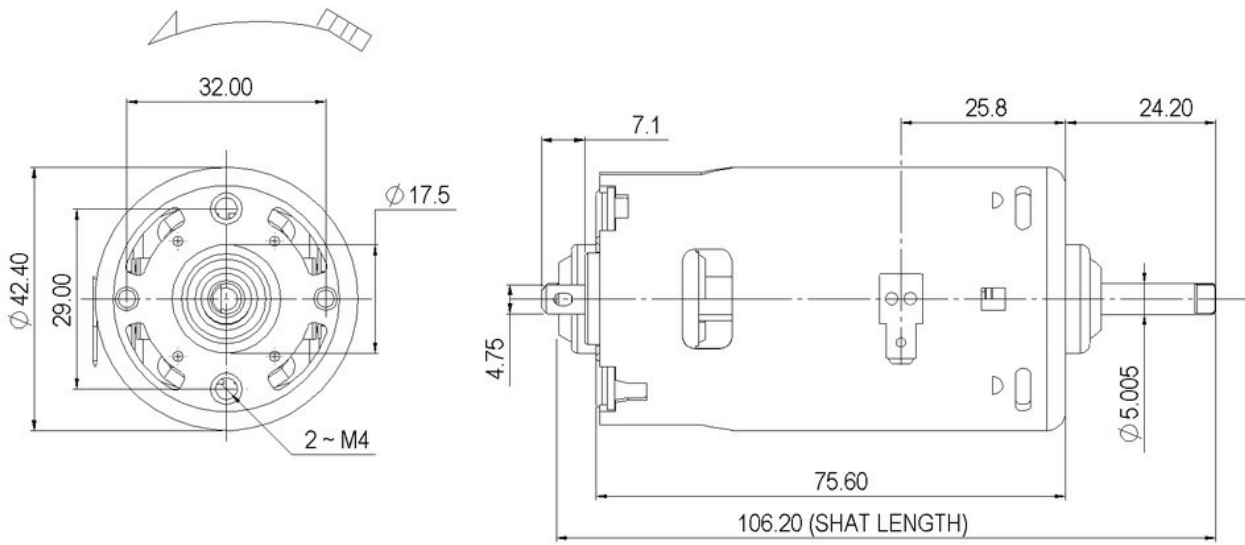
Performance Data:

	No Load	Stall	Maximum Efficiency	Maximum Power
Current (A)	0.20	-	1.00	2.23
Efficiency (%)	-	-	63	47
Output Power (W)	-	-	67.60	46.60
Speed (rpm)	12700	-	9400	5754
Torque (mNm)	-	-	69.00	197.24

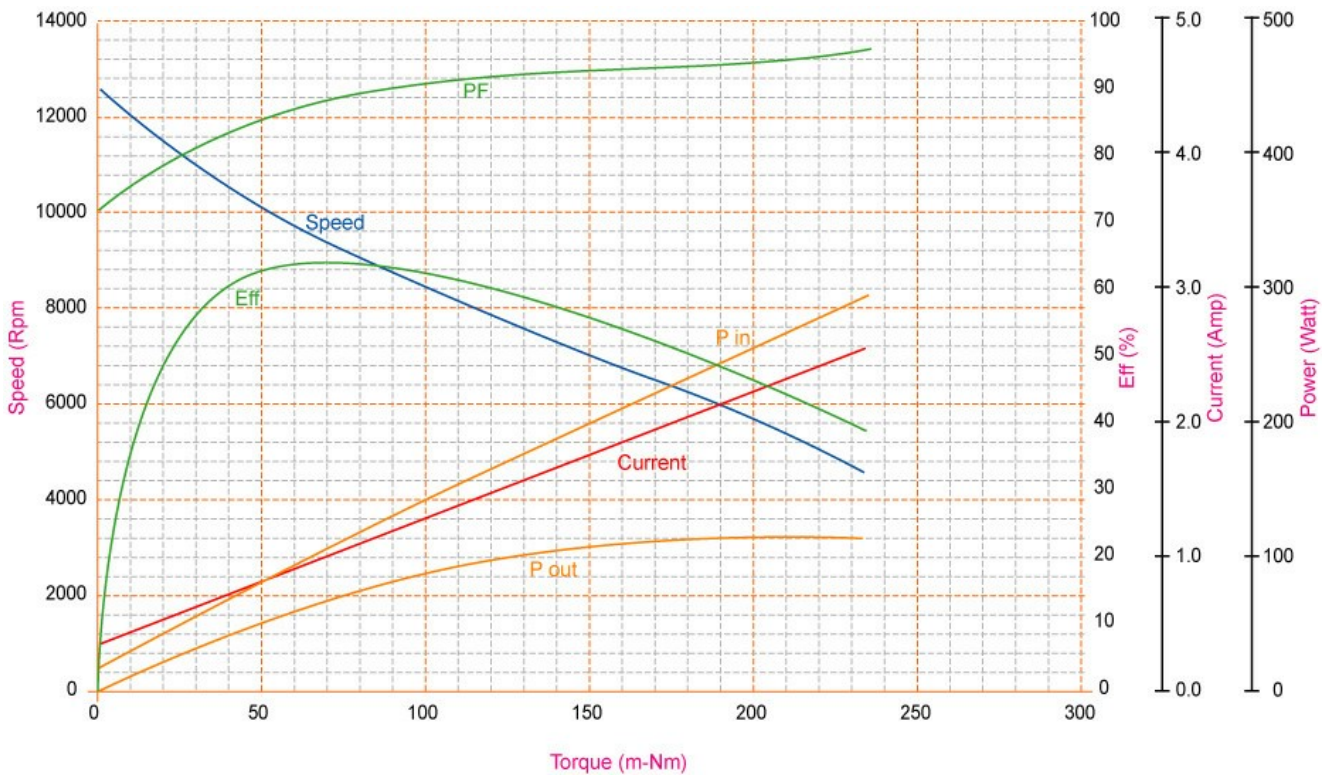
Application Examples:

Brush Roll and Power Brushes, Blenders

Outline Drawing:



Performance Curves:



Units in Metric

Characteristics:

High power, high efficiency High Voltage DC motor

Specifications:

Dimensions	: Ø 44.7 X 75.6 mm
Shaft Diameter	: Ø 5.000 mm
Input Voltage	: 230.0 V DC
Rectified	: Rectified
No Load Speed	: 12559 rpm
Maximum Efficiency	: 68%
Torque at Maximum Efficiency	: 74.89 mNm
Speed at Maximum Efficiency	: 10102 rpm
Other Features	: Plate rating power 500Wi for 5-10 seconds
Weight	: 415 g
Operating Temperature Range	: -10 to 55 °C
Storage Temperature Range	: -20 to 80 °C
Electrical Connection	: Terminal



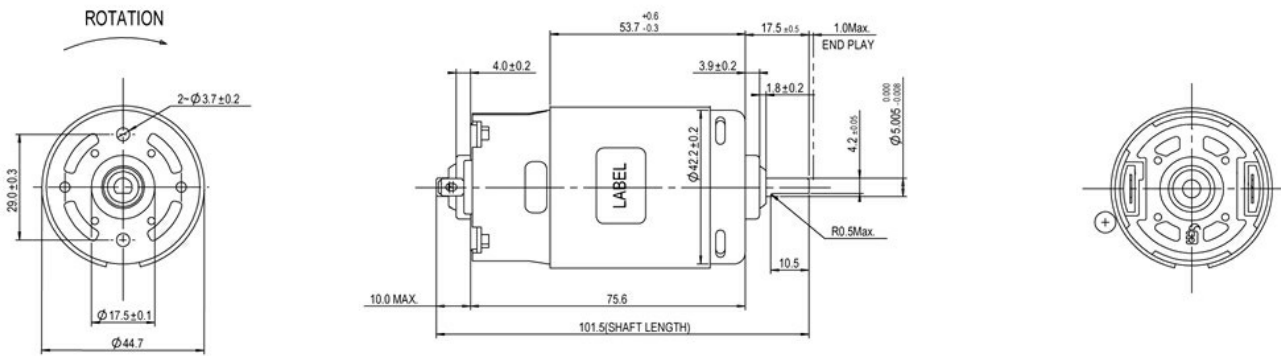
Performance Data:

	No Load	Stall	Maximum Efficiency	Maximum Power
Current (A)	0.10	-	0.59	-
Efficiency (%)	-	-	68	-
Output Power (W)	-	-	79.02	-
Speed (rpm)	12559	-	10102	-
Torque (mNm)	-	-	74.89	-

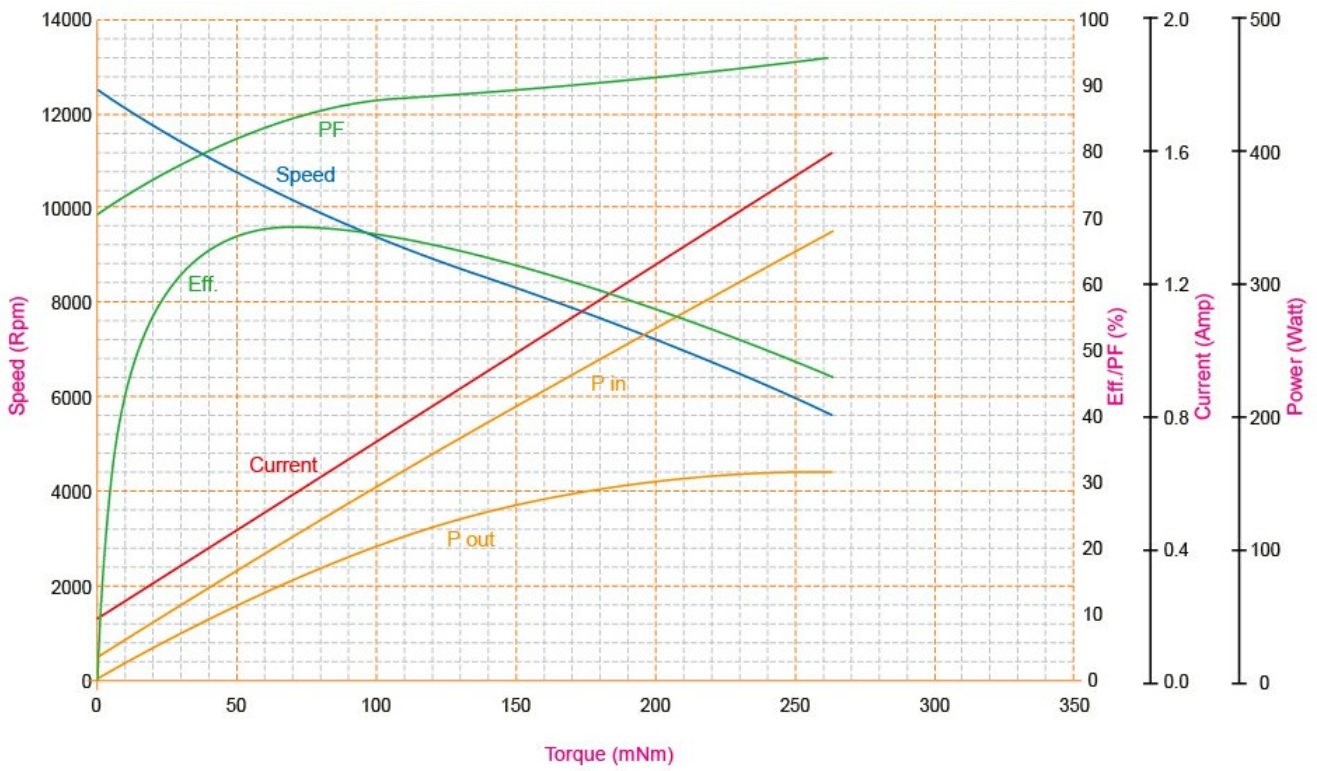
Application Examples:

Hand Blenders

Outline Drawing:



Performance Curves:



Units in Metric

Characteristics:

High Power, High Efficiency

Specifications:

Dimensions	: Ø 44.7 X 75.6 mm
Shaft Diameter	: Ø 5.000 mm
Input Voltage	: 230.0 V DC
Rectified	: Rectified
No Load Speed	: 11701 rpm
Maximum Efficiency	: 65%
Torque at Maximum Efficiency	: 97.47 mNm
Speed at Maximum Efficiency	: 8849 rpm
Other Features	: Plate rating power 500Wi for 5-10 seconds
Weight	: 420 g
Operating Temperature Range	: -10 to 55 °C
Storage Temperature Range	: -20 to 80 °C
Electrical Connection	: Terminal

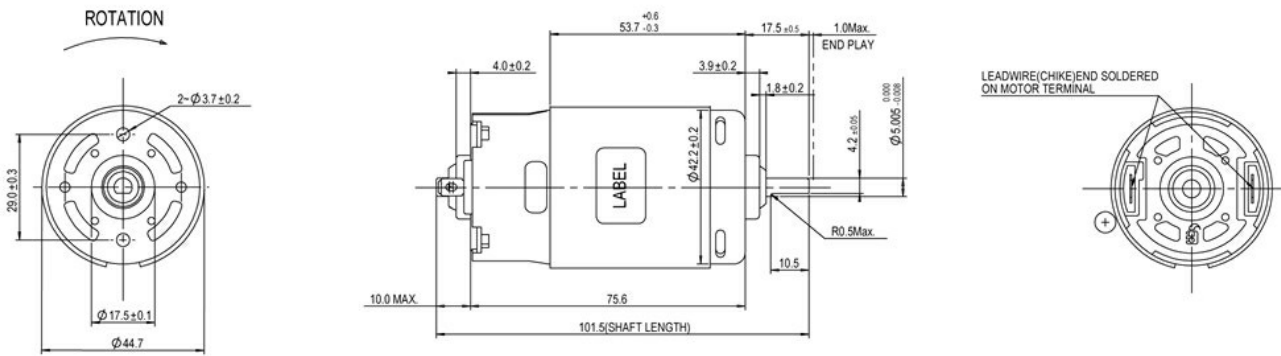
**Performance Data:**

	No Load	Stall	Maximum Efficiency	Maximum Power
Current (A)	0.13	-	0.69	-
Efficiency (%)	-	-	65	-
Output Power (W)	-	-	90.40	-
Speed (rpm)	11701	-	8849	-
Torque (mNm)	-	-	97.47	-

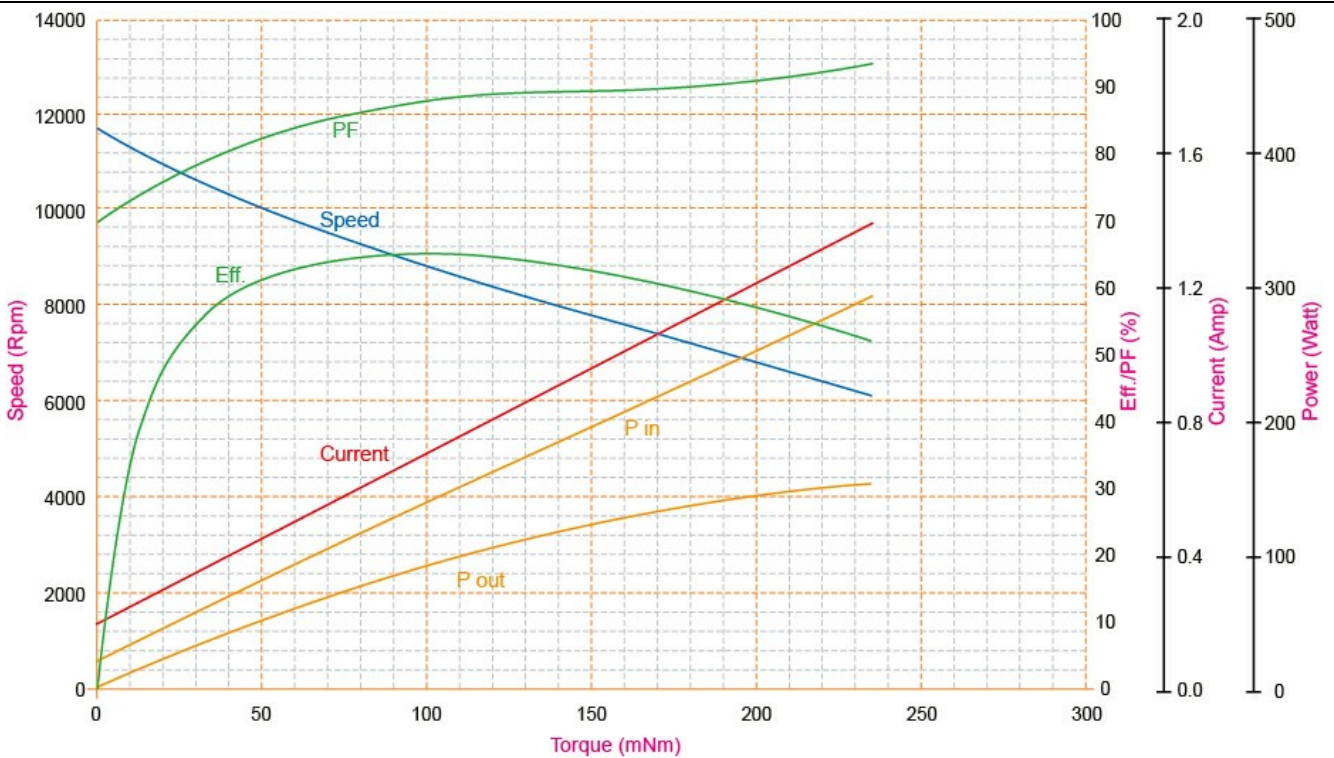
Application Examples:

Hand Blenders

Outline Drawing:



Performance Curves:



Units in Metric

Characteristics:

High Power HVDC Motor

Specifications:

Dimensions	: Ø 52.4 X 116 mm
Shaft Diameter	: Ø 6.350 mm
Input Voltage	: 120.0 V DC
Rectified	: Rectified
No Load Speed	: 11000 rpm
No Load Current	: 0.50 A
Maximum Efficiency	: 64%
Torque at Maximum Efficiency	: 160.00 mNm
Speed at Maximum Efficiency	: 8350 rpm
Life (Typical)	: 500 hr
Weight	: 795 g
Operating Temperature Range	: -10 to 55 °C
Storage Temperature Range	: -20 to 80 °C
Electrical Connection	: Terminals
Certification	: UL, cUL

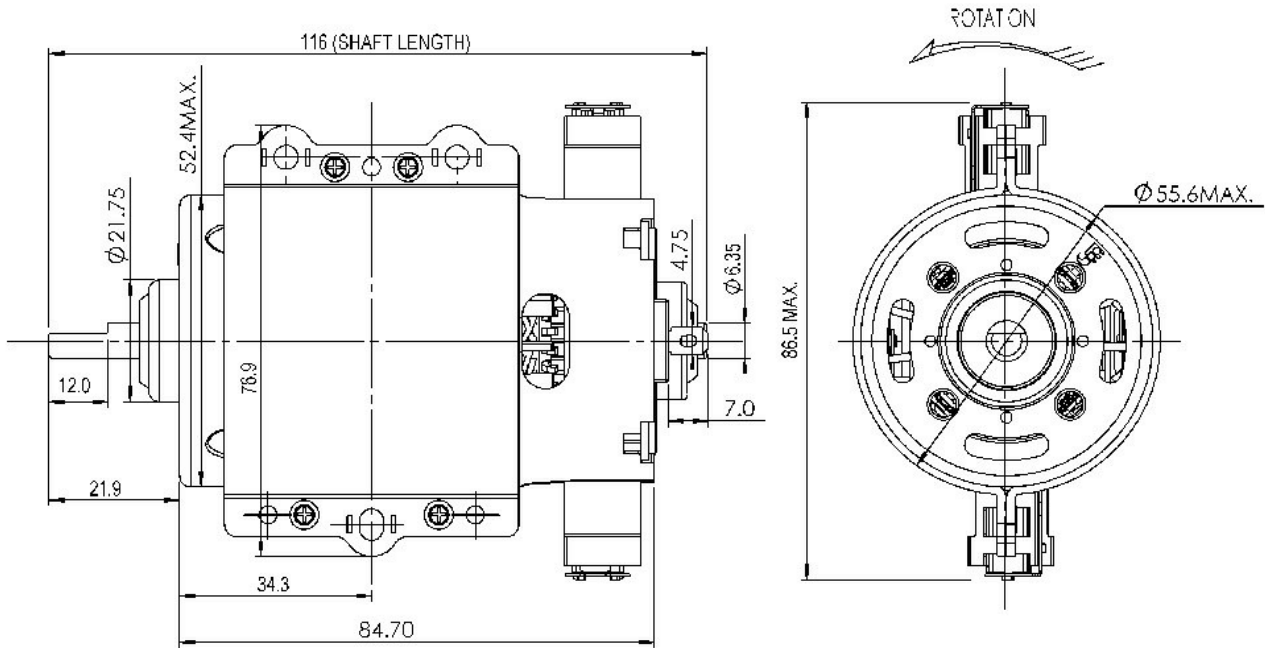
**Performance Data:**

	No Load	Stall	Maximum Efficiency	Maximum Power
Current (A)	0.50	-	2.16	-
Efficiency (%)	-	-	64	-
Output Power (W)	-	-	133.00	-
Speed (rpm)	11000	-	8350	-
Torque (mNm)	-	-	160.00	-

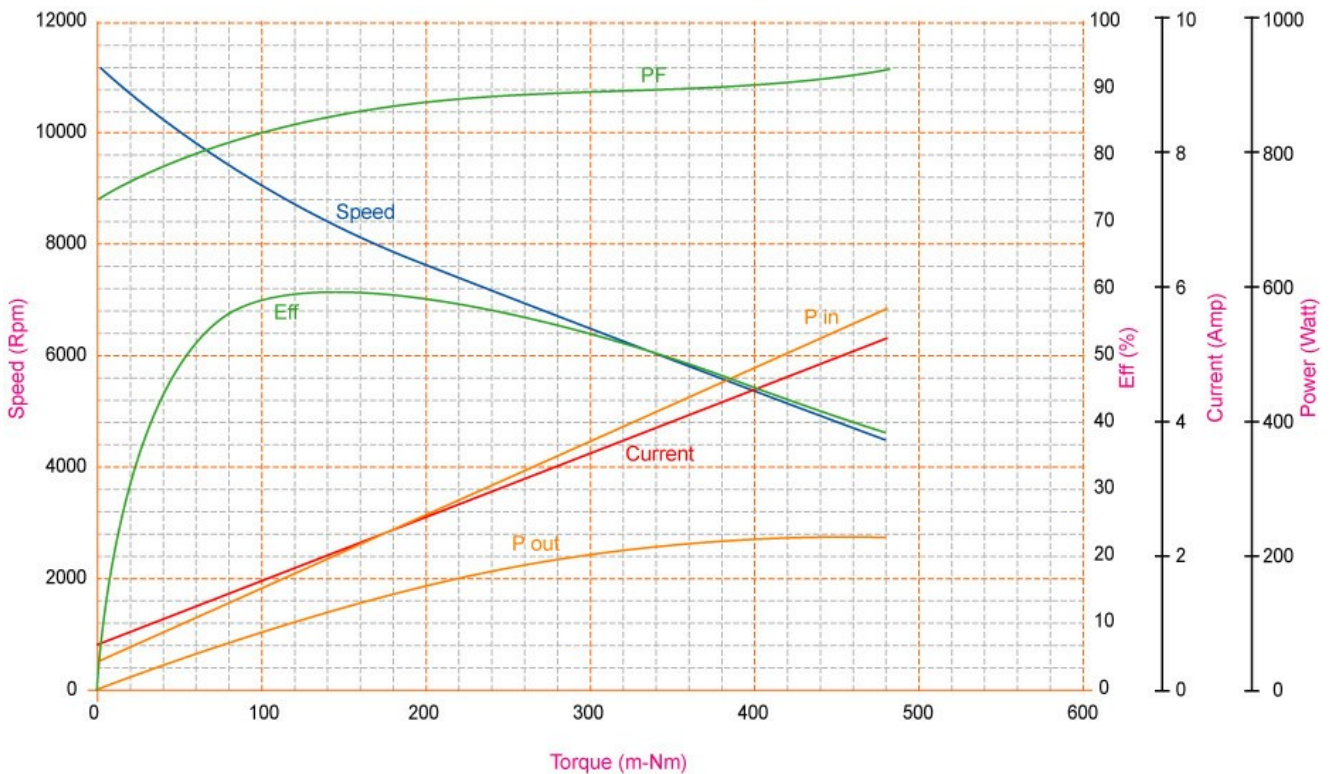
Application Examples:

Brush Roll and Power Brushes, Floor Polishers

Outline Drawing:



Performance Curves:



Units in Metric

Characteristics:

High Power High Voltage DC Motors

Specifications:

Dimensions	: Ø 52.4 X 84.7 mm
Shaft Diameter	: Ø 6.351 mm
Input Voltage	: 120.0 V DC
Rectified	: Rectified
No Load Speed	: 10843 rpm
Maximum Efficiency	: 72%
Torque at Maximum Efficiency	: 183.20 mNm
Speed at Maximum Efficiency	: 8261 rpm
Weight	: 618 g
Operating Temperature Range	: -10 to 55 °C
Storage Temperature Range	: -20 to 80 °C
Electrical Connection	: Terminal

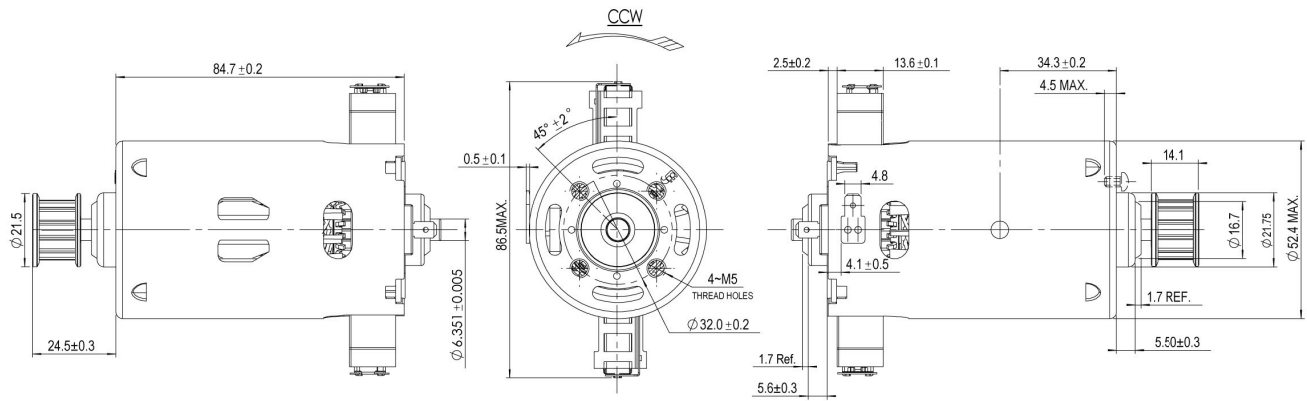
**Performance Data:**

	No Load	Stall	Maximum Efficiency	Maximum Power
Current (A)	1.08	-	3.45	-
Efficiency (%)	-	-	72	-
Output Power (W)	-	-	157.81	-
Speed (rpm)	10843	-	8261	-
Torque (mNm)	-	-	183.20	-

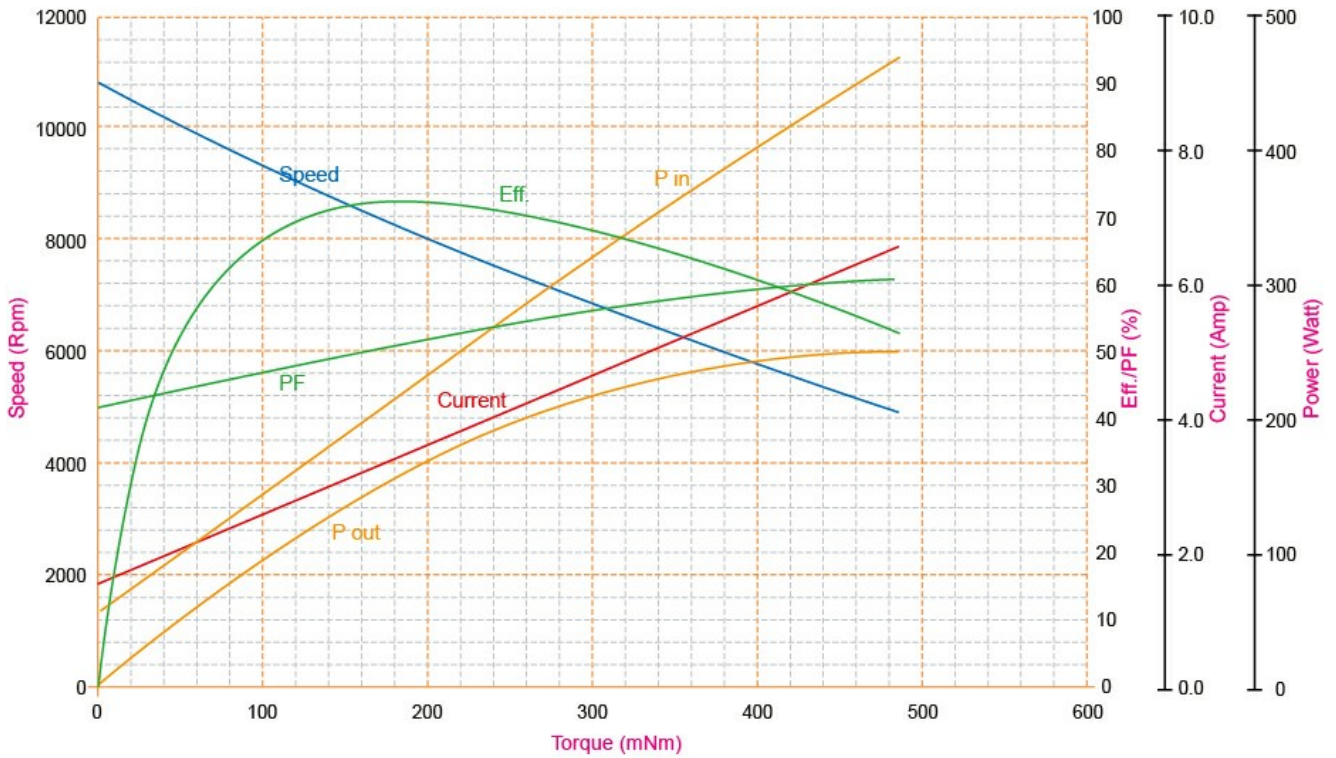
Application Examples:

Grinders, Coffee Machines

Outline Drawing:



Performance Curves:



Units in Metric

Characteristics:

DF651 platform with 30W output power and long life 600hrs

Specifications:

Dimensions	: Ø 38.5 X 31.5 X 66.5 mm
Shaft Diameter	: Ø 4.000 mm
Input Voltage	: 240.0 V DC
Rectified	: Rectified
No Load Speed	: 13000 rpm
Maximum Efficiency	: 69%
Torque at Maximum Efficiency	: 35.00 mNm
Speed at Maximum Efficiency	: 10600 rpm
Life (Typical)	: 600 hr
Life Test Condition	: Rectified input with E-capacitor
Weight	: 234 g
Operating Temperature Range	: 0 to 40 °C
Storage Temperature Range	: -10 to 50 °C
Electrical Connection	: leadwire

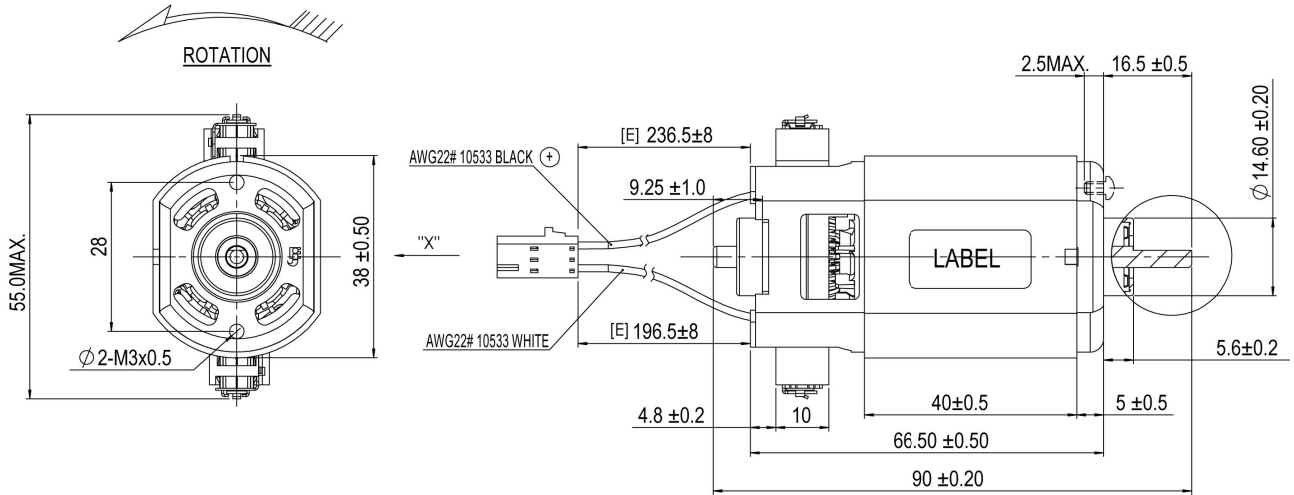
**Performance Data:**

	No Load	Stall	Maximum Efficiency	Maximum Power
Current (A)	0.17	-	0.60	-
Efficiency (%)	-	-	69	-
Output Power (W)	-	-	38.00	-
Speed (rpm)	13000	-	10600	-
Torque (mNm)	-	-	35.00	-

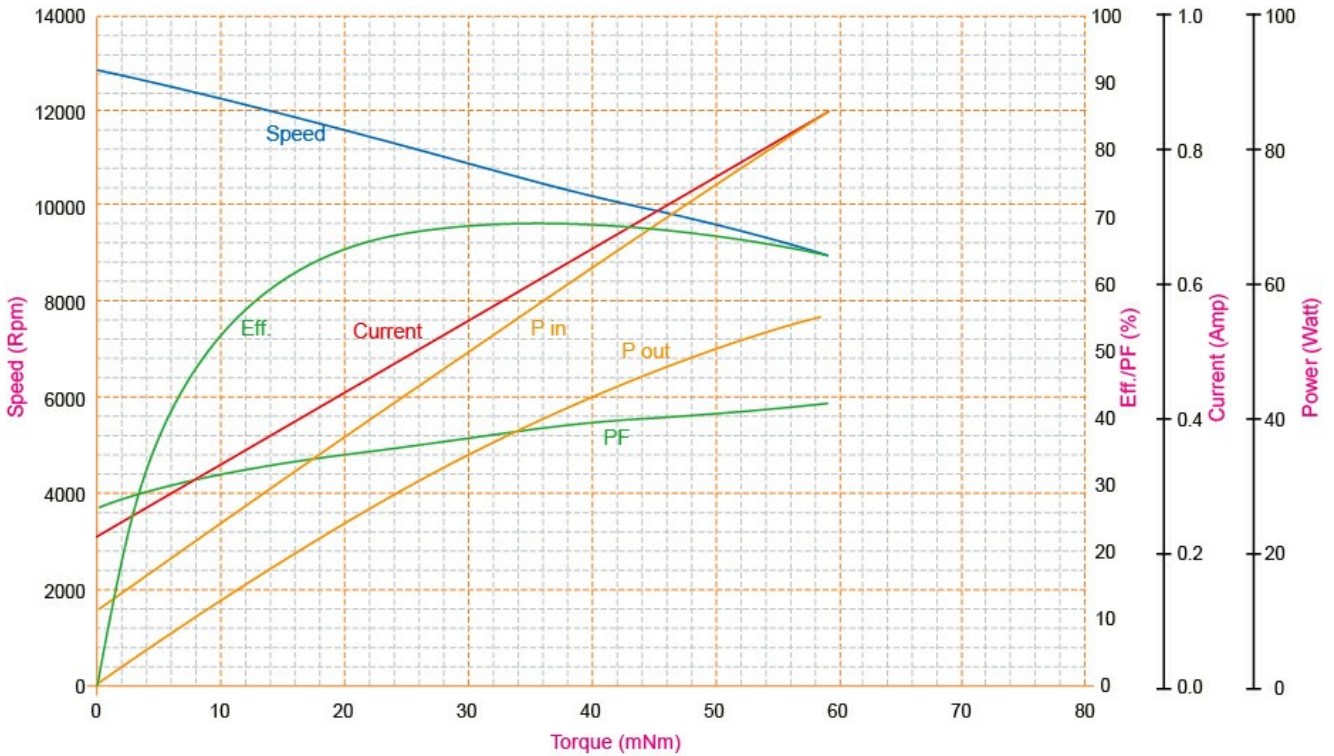
Application Examples:

Brush Roll and Power Brushes

Outline Drawing:



Performance Curves:



Units in Metric

Characteristics:

DF651 platform with 30W output power and long life 600hrs

Specifications:

Dimensions	: Ø 38.5 X 31.5 X 66.5 mm
Shaft Diameter	: Ø 4.000 mm
Input Voltage	: 120.0 V DC
Rectified	: Rectified
No Load Speed	: 12700 rpm
Maximum Efficiency	: 69%
Torque at Maximum Efficiency	: 40.00 mNm
Speed at Maximum Efficiency	: 10000 rpm
Life (Typical)	: 600 hr
Life Test Condition	: Rectified input with E-capacitor
Weight	: 233 g
Operating Temperature Range	: 0 to 40 °C
Storage Temperature Range	: -10 to 50 °C
Electrical Connection	: leadwire

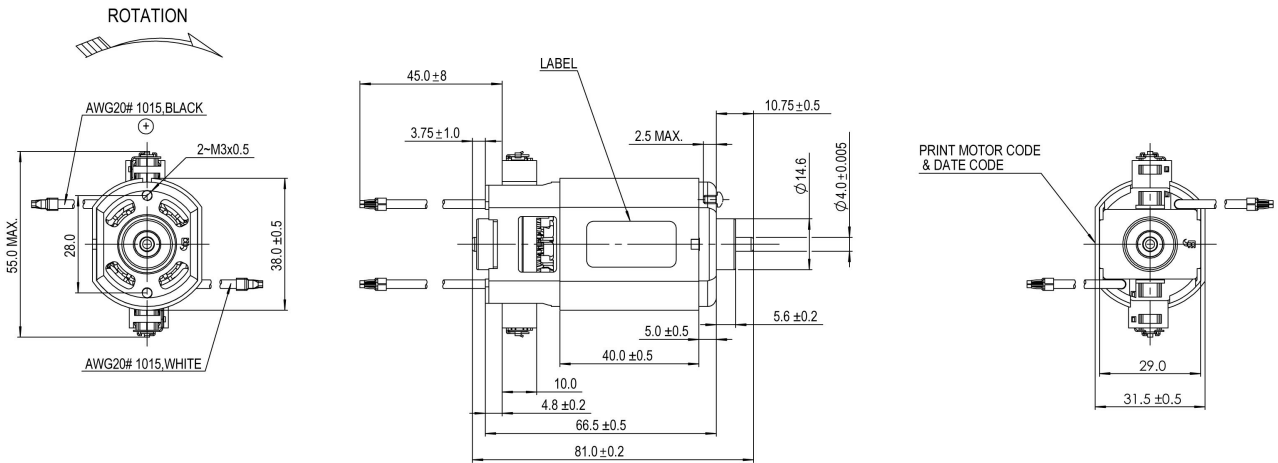
**Performance Data:**

	No Load	Stall	Maximum Efficiency	Maximum Power
Current (A)	0.35	-	1.20	-
Efficiency (%)	-	-	69	-
Output Power (W)	-	-	42.00	-
Speed (rpm)	12700	-	10000	-
Torque (mNm)	-	-	40.00	-

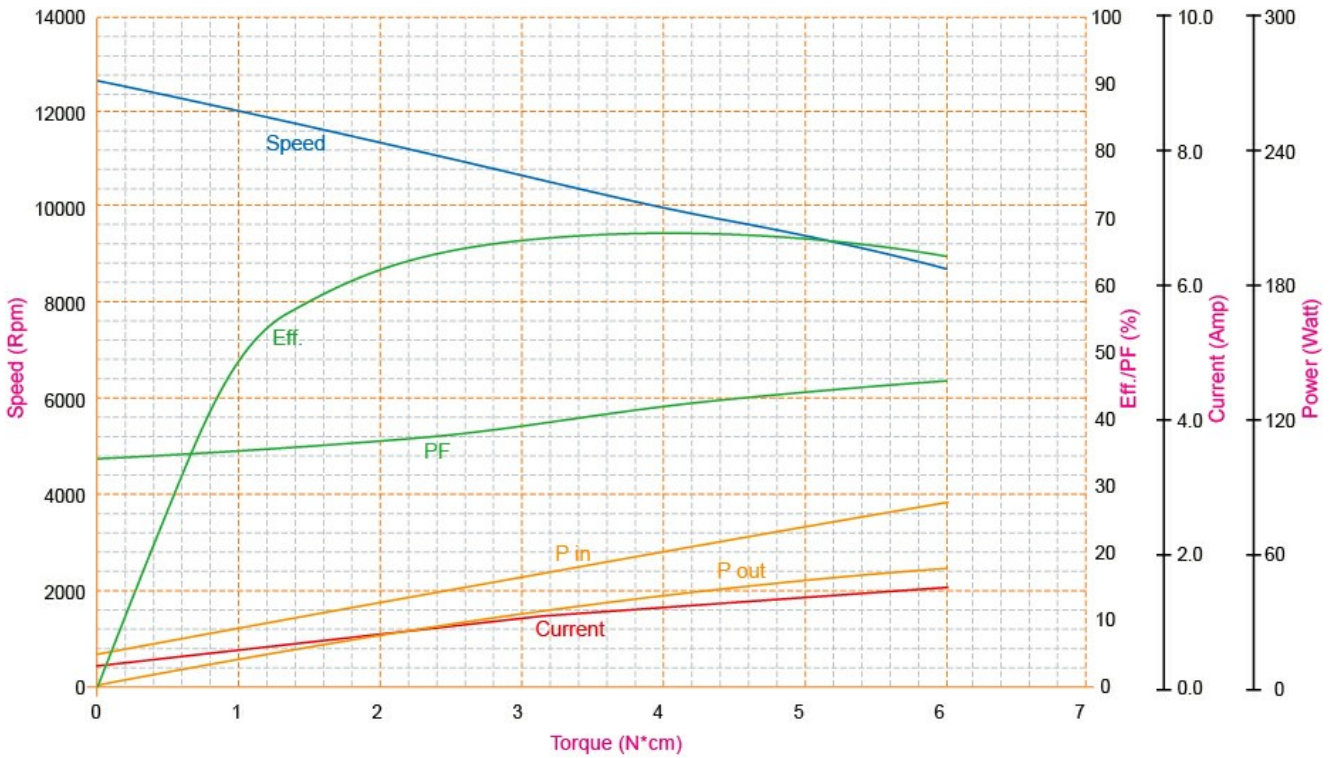
Application Examples:

Brush Roll and Power Brushes

Outline Drawing:



Performance Curves:



Units in Metric

Characteristics:

Compact, High Reliability

Specifications:

Dimensions	: Ø 38.5 X 32.0 X 66.5 mm
Shaft Diameter	: Ø 4.000 mm
Input Voltage	: 230.0 V DC
Rectified	: Rectified
No Load Speed	: 19815 rpm
Maximum Efficiency	: 61%
Torque at Maximum Efficiency	: 35.57 mNm
Speed at Maximum Efficiency	: 15035 rpm
Operating Temperature Range	: -10 to 50 °C
Storage Temperature Range	: -20 to 80 °C
Electrical Connection	: Leadwire

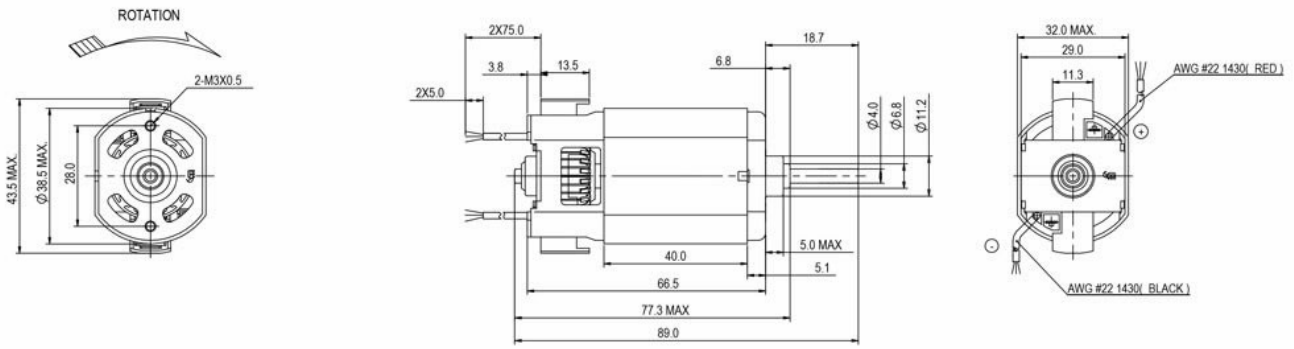
**Performance Data:**

	No Load	Stall	Maximum Efficiency	Maximum Power
Current (A)	0.13	-	0.46	-
Efficiency (%)	-	-	61	-
Output Power (W)	-	-	56.95	-
Speed (rpm)	19815	-	15035	-
Torque (mNm)	-	-	35.57	-

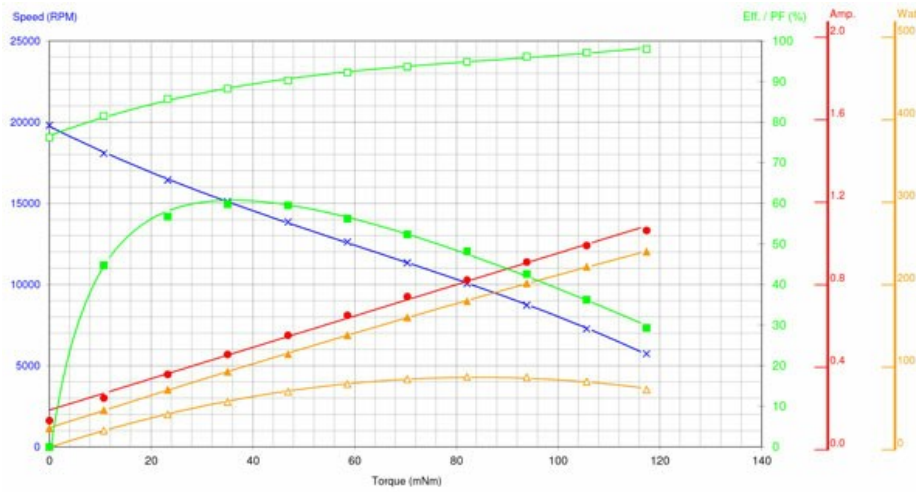
Application Examples:

Angle Grinders

Outline Drawing:



Performance Curves:



Units in Metric

Characteristics:

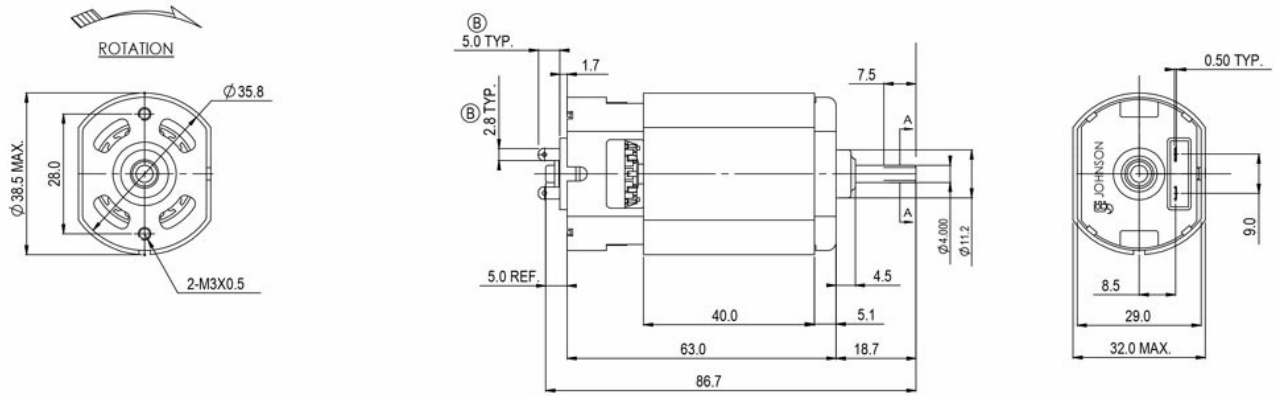
 Compact, High Reliability
Specifications:

Dimensions	: Ø 38.5 X 32.0 X 63.0 mm
Shaft Diameter	: Ø 4.000 mm
Input Voltage	: 120.0 V DC
No Load Speed	: 20795 rpm
Maximum Efficiency	: 56%
Torque at Maximum Efficiency	: 35.66 mNm
Speed at Maximum Efficiency	: 14874 rpm
Operating Temperature Range	: -10 to 50 °C
Storage Temperature Range	: -20 to 80 °C
Electrical Connection	: Terminal

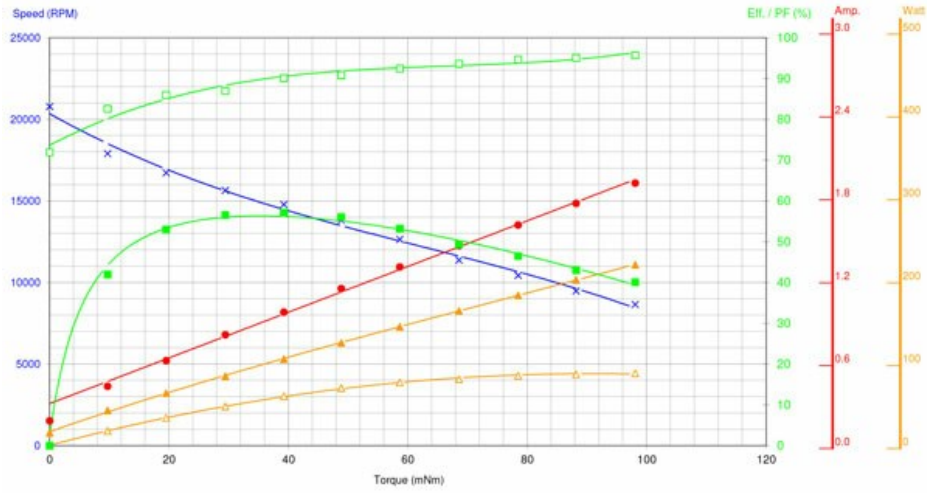
**Performance Data:**

	No Load	Stall	Maximum Efficiency	Maximum Power
Current (A)	0.18	-	0.91	-
Efficiency (%)	-	-	56	-
Output Power (W)	-	-	55.99	-
Speed (rpm)	20795	-	14874	-
Torque (mNm)	-	-	35.66	-

Outline Drawing:



Performance Curves:



Units in Metric

Characteristics:

Compact, High Reliability

Specifications:

Dimensions	: Ø 38.5 X 32.0 X 66.5 mm
Shaft Diameter	: Ø 4.000 mm
Input Voltage	: 230.0 V DC
Rectified	: Rectified
No Load Speed	: 14635 rpm
Maximum Efficiency	: 56%
Torque at Maximum Efficiency	: 38.83 mNm
Speed at Maximum Efficiency	: 10241 rpm
Operating Temperature Range	: -10 to 50 °C
Storage Temperature Range	: -20 to 80 °C
Electrical Connection	: Leadwire

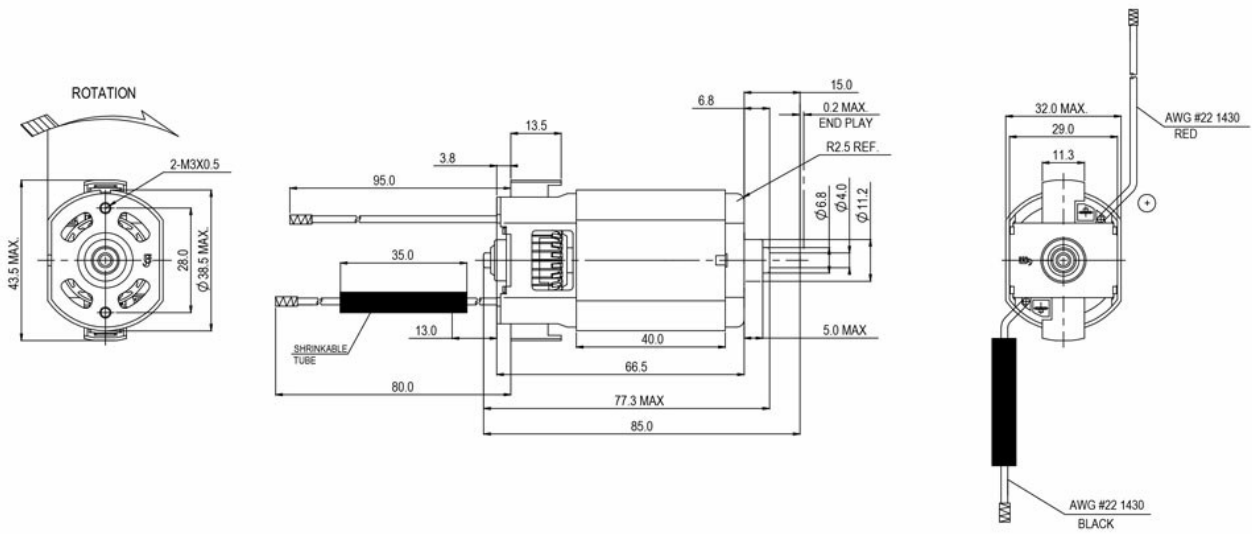
**Performance Data:**

	No Load	Stall	Maximum Efficiency	Maximum Power
Current (A)	0.08	-	0.36	-
Efficiency (%)	-	-	56	-
Output Power (W)	-	-	42.00	-
Speed (rpm)	14635	-	10241	-
Torque (mNm)	-	-	38.83	-

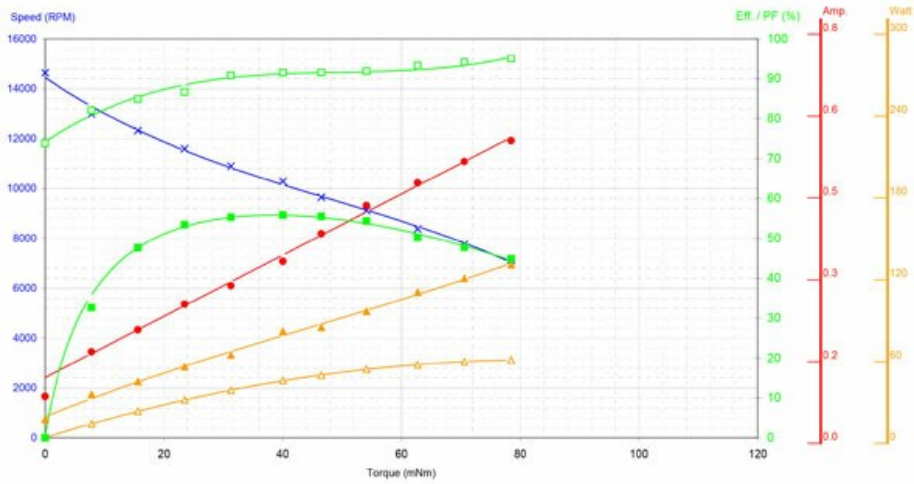
Application Examples:

Rotary Sanders

Outline Drawing:



Performance Curves:



Units in Metric

Characteristics:

High torque HVDC motor

Specifications:

Dimensions	: Ø 38.5 X 32.0 mm
Length	: 63.00 mm
Input Voltage	: 120.0 V AC
Shaft Diameter	: Ø 4.000 mm
No Load Speed	: 12500 rpm
No Load Current	: 0.08 A
Nominal Speed	: 8500 rpm
Nominal Torque	: 2.30 mNm
Nominal Current	: 0.44 A
Life (Typical)	: 300 hr
Weight	: 220 g
Operating Temperature Range	: -10 to 55 °C
Storage Temperature Range	: -20 to 80 °C
Electrical Connection	: Terminals

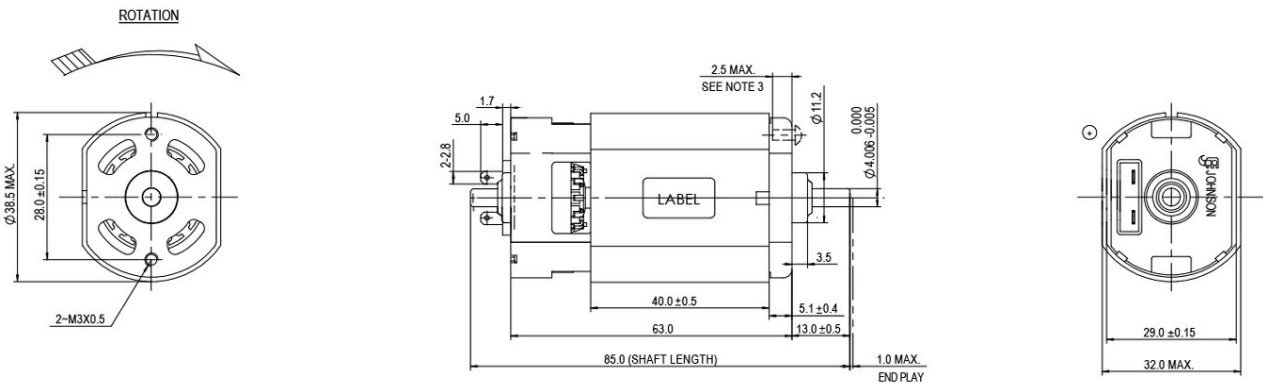
**Performance Data:**

	No Load	Stall	Maximum Efficiency	Maximum Power
Current (A)	0.08	-	0.44	-
Efficiency (%)	-	-	51	-
Output Power (W)	-	-	25.00	-
Speed (rpm)	12500	-	8500	-
Torque (mNm)	-	-	27.30	-

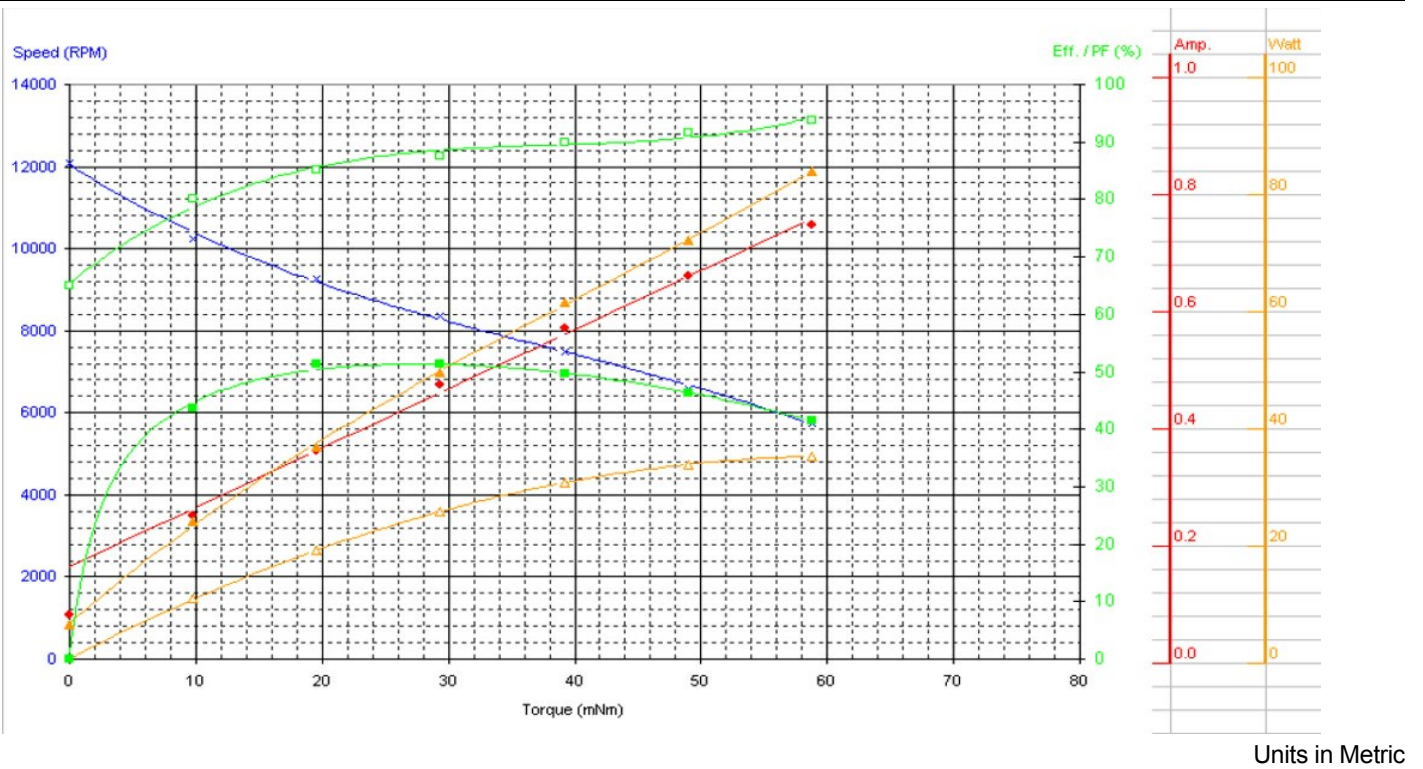
Application Examples:

Brush Roll and Power Brushes

Outline Drawing:



Performance Curves:



Characteristics:

High Torque HVDC Motor

Specifications:

Dimensions	: Ø 38.5 X 32.0 mm
Length	: 63.00 mm
Input Voltage	: 230.0 V AC
Shaft Diameter	: Ø 4.000 mm
No Load Speed	: 13000 rpm
No Load Current	: 0.07 A
Nominal Speed	: 9300 rpm
Nominal Torque	: 25.60 mNm
Nominal Current	: 0.25 A
Life (Typical)	: 300 hr
Weight	: 220 g
Operating Temperature Range	: -10 to 55 °C
Storage Temperature Range	: -20 to 80 °C
Electrical Connection	: Terminals

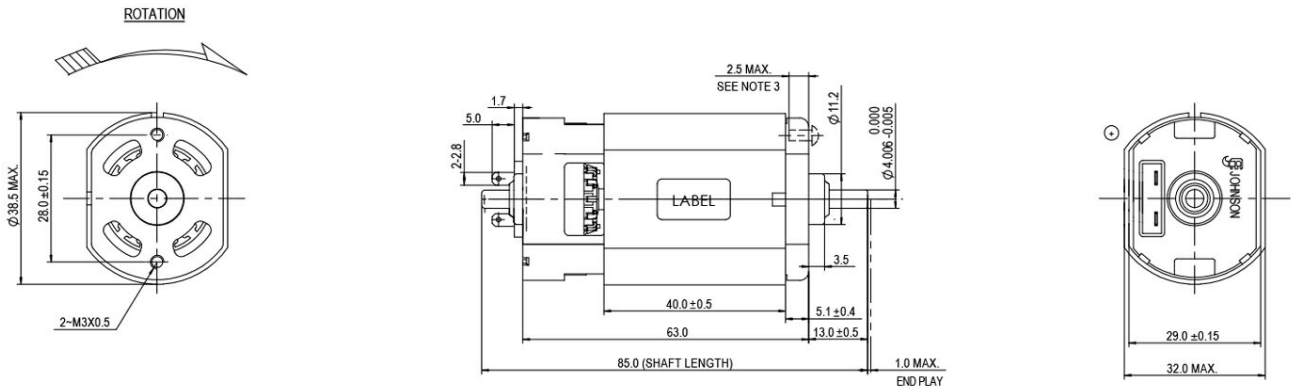
**Performance Data:**

	No Load	Stall	Maximum Efficiency	Maximum Power
Current (A)	0.07	-	0.25	-
Efficiency (%)	-	-	55	-
Output Power (W)	-	-	25.00	-
Speed (rpm)	13000	-	9300	-
Torque (mNm)	-	-	25.60	-

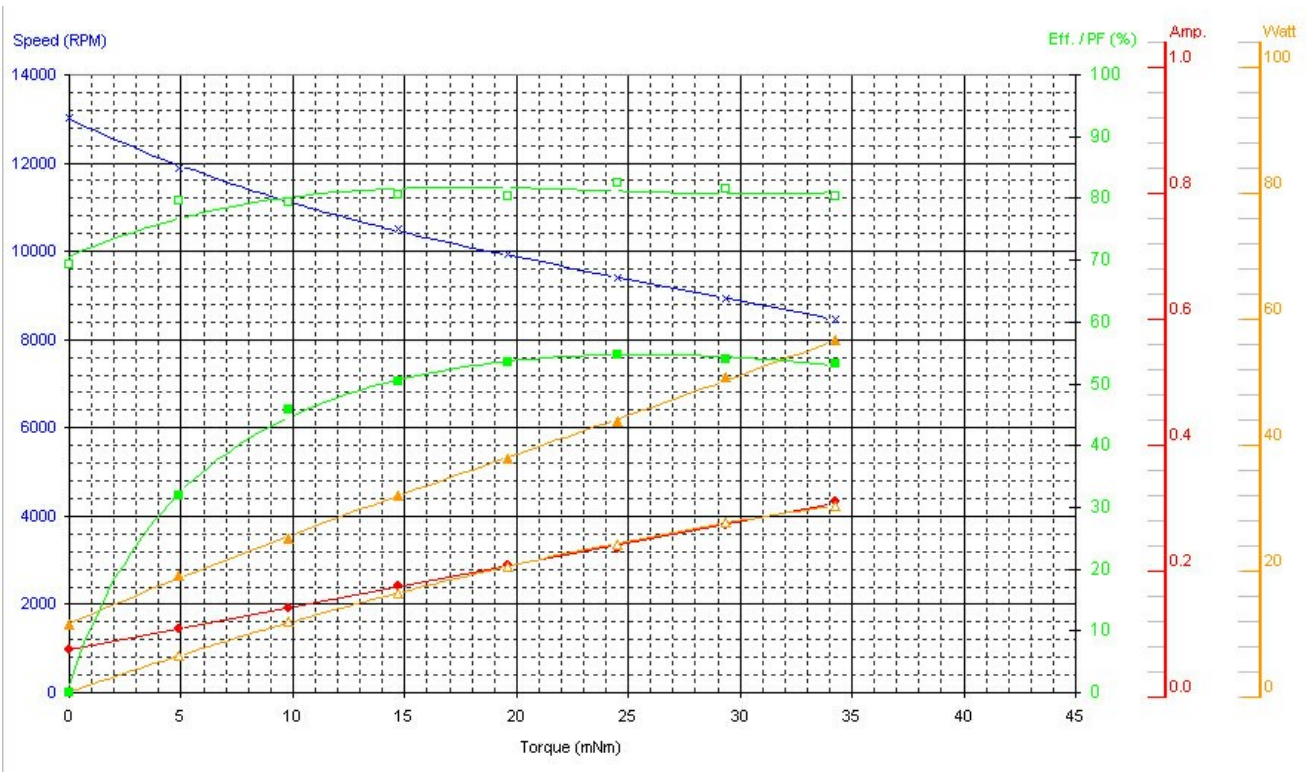
Application Examples:

Brush Roll and Power Brushes

Outline Drawing:



Performance Curves:



Units in Metric

Characteristics:

DC900 platform with 150 W output power and 500 hours long life

Specifications:

Dimensions	: Ø 55.6 X 84.7 mm
Shaft Diameter	: Ø 6.350 mm
Input Voltage	: 120.0 V DC
Rectified	: Rectified
No Load Speed	: 14000 rpm
Maximum Efficiency	: 68%
Torque at Maximum Efficiency	: 180.00 mNm
Speed at Maximum Efficiency	: 10500 rpm
Life (Typical)	: 500 hr
Life Test Condition	: Rectified input with E-capacitor
Weight	: 813 g
Operating Temperature Range	: 0 to 40 °C
Storage Temperature Range	: -10 to 50 °C
Electrical Connection	: terminal

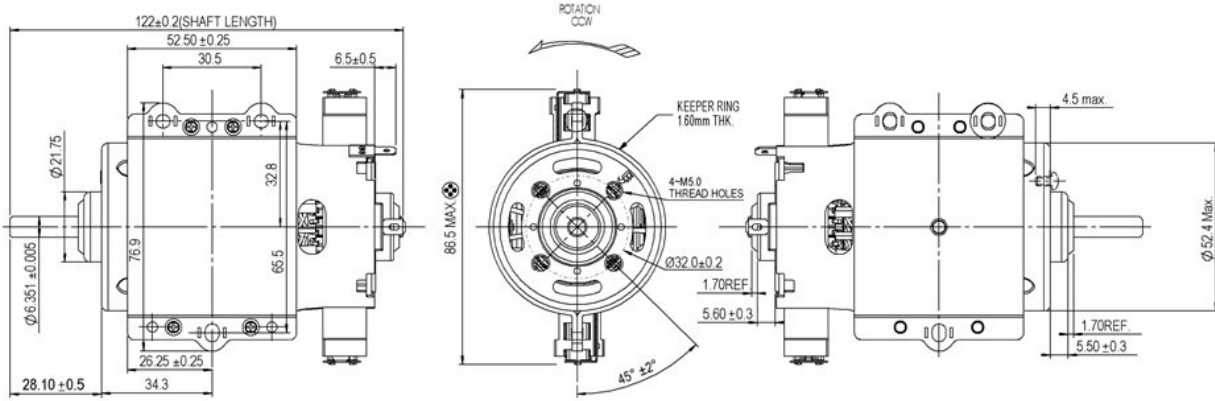
**Performance Data:**

	No Load	Stall	Maximum Efficiency	Maximum Power
Current (A)	1.04	-	3.66	-
Efficiency (%)	-	-	68	-
Output Power (W)	-	-	199.00	-
Speed (rpm)	14000	-	10500	-
Torque (mNm)	-	-	180.00	-

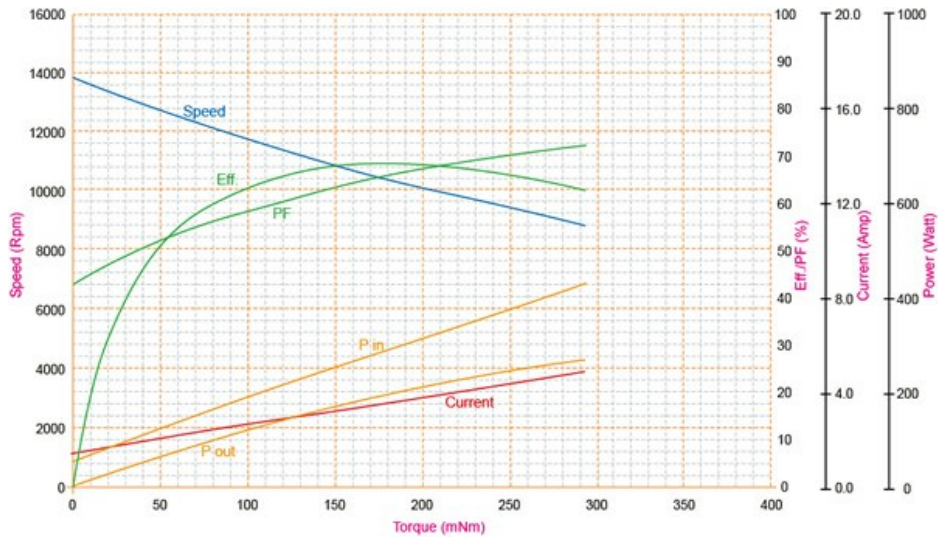
Application Examples:

Brush Roll and Power Brushes

Outline Drawing:



Performance Curves:



Units in Metric

Characteristics:

High Power, High Torque, High Efficiency

Specifications:

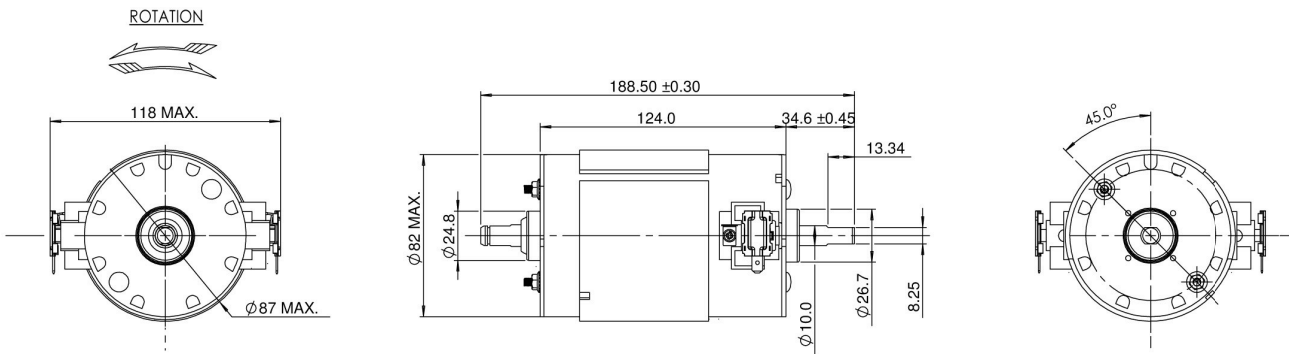
Dimensions	: Ø 82.0 X 124.0 mm
Shaft Diameter	: Ø 10.000 mm
Input Voltage	: 140.0 V DC
No Load Speed	: 2648 rpm
Maximum Efficiency	: 80%
Torque at Maximum Efficiency	: 450.00 mNm
Speed at Maximum Efficiency	: 2378 rpm
Life Test Condition	: 50
Operating Temperature Range	: -10 to 50 °C
Storage Temperature Range	: -20 to 85 °C
Electrcial Connection	: Terminal



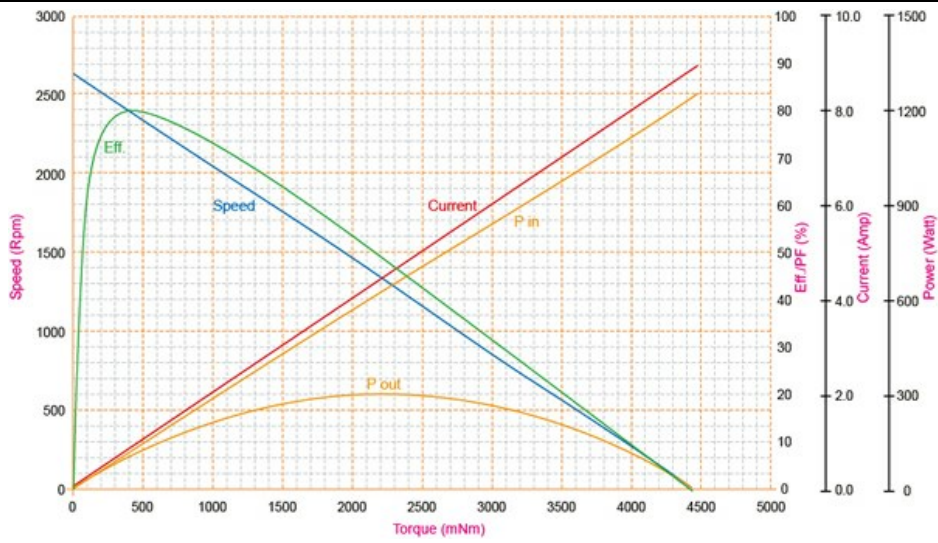
Performance Data:

	No Load	Stall	Maximum Efficiency	Maximum Power
Current (A)	0.11	-	1.00	-
Efficiency (%)	-	-	80	-
Output Power (W)	-	-	112.00	-
Speed (rpm)	2648	-	2378	-
Torque (mNm)	-	-	450.00	-

Outline Drawing:



Performance Curves:



Units in Metric